

VORTAC IPL 115.9 Chan 106	APP CRS 311°	Rwy Ldg TDZE Apt Elev N/A N/A -54
---	------------------------	---

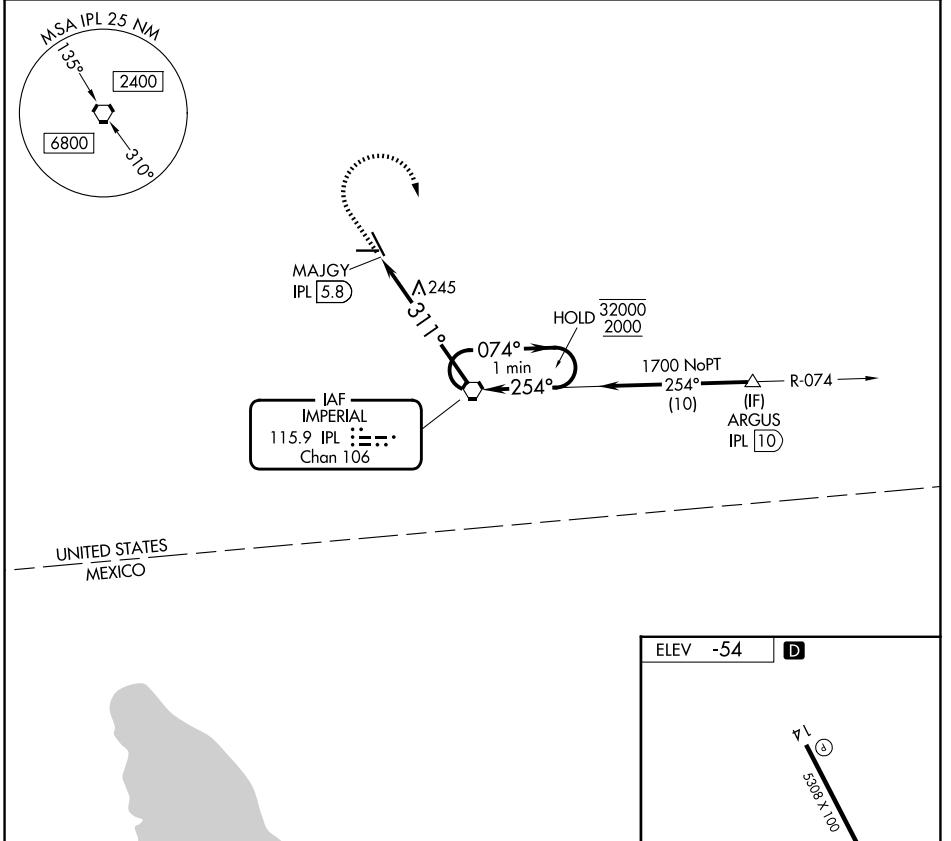
VOR-A
IMPERIAL COUNTY (IPL)

DME required for procedure entry at ARGUS.

⚠ Circling to Rwy 32 NA at night. When local altimeter setting not received, procedure NA.

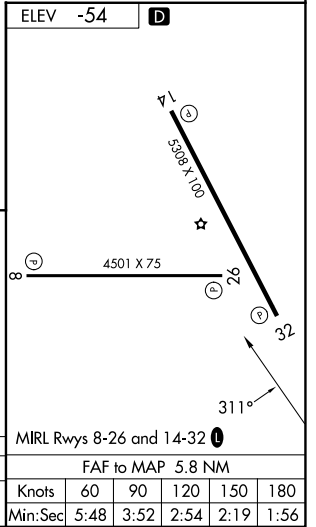
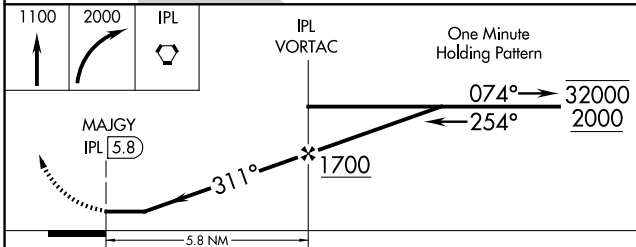
MISSED APPROACH: Climb to 1100 then climbing right turn to 2000 direct IPL VORTAC and hold.

ASOS 132.175	YUMA CERAP 132.275 292.2	UNICOM 122.7 (CTAF) 0
------------------------	------------------------------------	---------------------------------



SW-3, 14 MAY 2026 to 11 JUN 2026

SW-3, 14 MAY 2026 to 11 JUN 2026



CATEGORY	A	B	C	D	FAF to MAP 5.8 NM					
CIRCLING	500-1	554 (600-1)	560-1 ³ / ₄ 614 (700-1 ³ / ₄)	560-2 614 (700-2)	Knots	60	90	120	150	180
					Min:Sec	5:48	3:52	2:54	2:19	1:56