

WAAS CH <b>61347</b> <b>W18A</b>	APP CRS <b>175°</b>	Rwy Ldg TDZE Apt Elev	<b>5200</b> <b>1161</b> <b>1161</b>
--	------------------------	-----------------------------	---

# RNAV (GPS) RWY 18

BERLIN RGNL (BML)

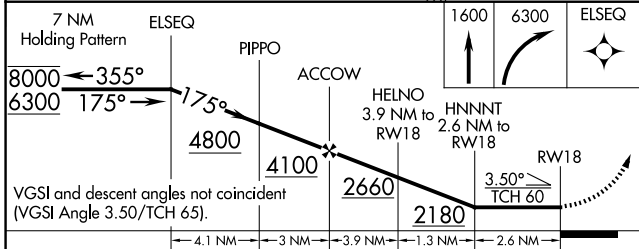
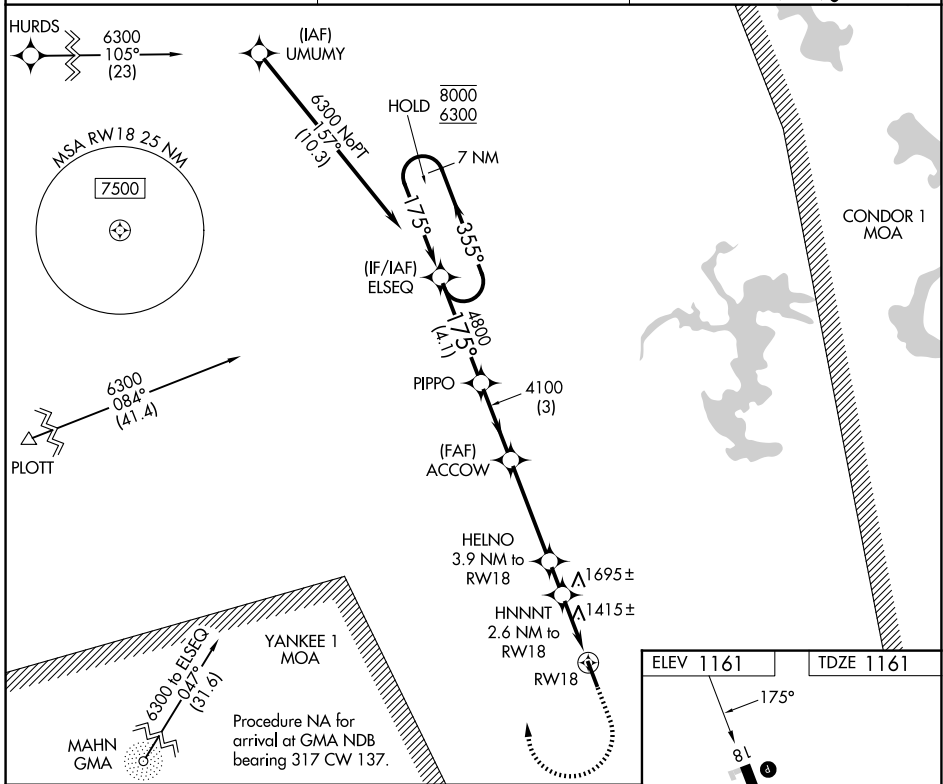
RNP APCH - GPS.

**▼** Rwy 18 helicopter visibility reduction below 1 SM NA. When local altimeter setting not received, use HIE altimeter setting and increase all MDAs 60 feet and LP visibility Cat C/D ½ SM. Procedure NA at night.

**▲** MISSED APPROACH: (Do not exceed 210K until ELSEQ) Climb to 1600 then climbing right turn to 6300 direct ELSEQ and hold, continue climb-in-hold to 6300.

**⚡** -28°C

ASOS <b>135.175</b>	BOSTON CENTER <b>135.7 282.2</b>	UNICOM <b>122.7 (CTAF) 0</b>
------------------------	-------------------------------------	---------------------------------



ELEV 1161	TDZE 1161
-----------	-----------

**175°**

**0.5% DOWN**

**5200 X 100**

**36**

HIRL Rwy 18-36 0

REIL Rwy 18 and 36 0

CATEGORY	A	B	C	D
LP MDA	1840-1	679 (700-1)	1840-1 7/8	679 (700-1 7/8)
LNAV MDA	1960-1 799 (800-1)	1960-1 1/4 799 (800-1 1/4)	1960-2 1/2	799 (800-2 1/2)
CIRCLING	2180-1 1/4 1019 (1100-1 1/4)	2280-1 1/2 1119 (1200-1 1/2)	2600-3 1439 (1500-3)	2720-3 1559 (1600-3)

NE-1, 14 MAY 2026 to 11 JUN 2026

NE-1, 14 MAY 2026 to 11 JUN 2026