

WAAS CH 90241 W35A	APP CRS 349°	Rwy Ldg TDZE Apt Elev	7000 5274 5274
--	------------------------	-----------------------------	---

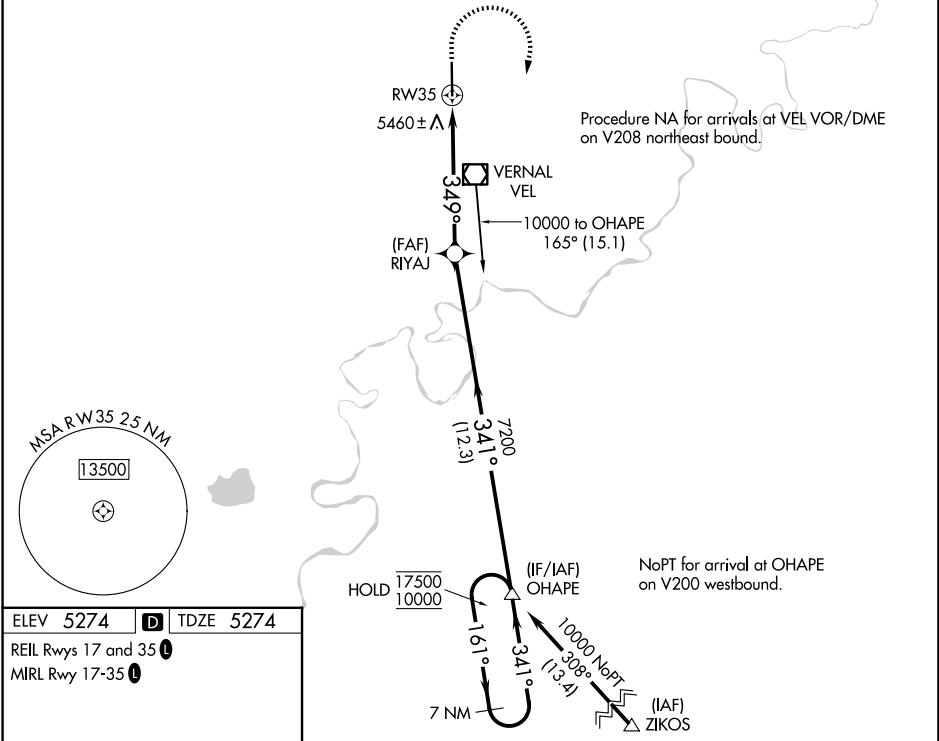
RNAV (GPS) Z RWY 35

VERNAL RGNL (VEL)

RNP APCH.
 ▼ Rwy 35 helicopter visibility reduction below 3/4 SM NA.
 ▲ For uncompensated Baro-VNAV systems, procedure NA below -26°C or above 54°C.
 ❄️ -26°C

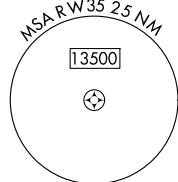
MISSED APPROACH: Climb to 7000 then climbing right turn to 10000 direct OHAPE and hold.
 *Missed approach requires minimum climb of 290 feet per NM to 8600.

ASOS 118.125	SALT LAKE CENTER 119.95 377.15	UNICOM 122.7 (CTAF)
------------------------	--	-------------------------------



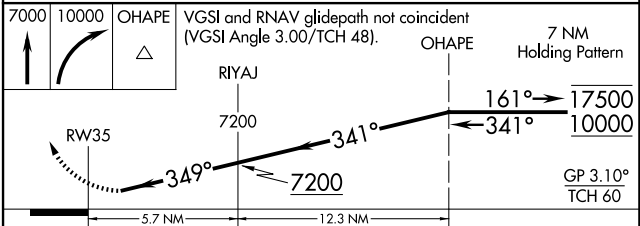
SW-4, 14 MAY 2026 to 11 JUN 2026

SW-4, 14 MAY 2026 to 11 JUN 2026



ELEV 5274	D	TDZE 5274
-----------	----------	-----------

REIL Rwy 17 and 35
 MIRL Rwy 17-35



CATEGORY	A	B	C	D
LPV DA*		5610-1	336 (400-1)	
LPV DA		6175-2½	901 (1000-2½)	
LNAV/VNAV DA*		5786-1¾	512 (600-1¾)	
LNAV/VNAV DA		6093-2½	819 (900-2½)	

RNAV (GPS) Z RWY 35