

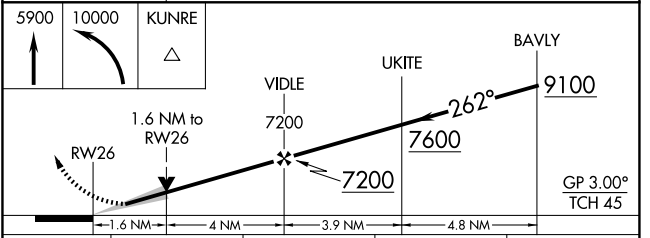
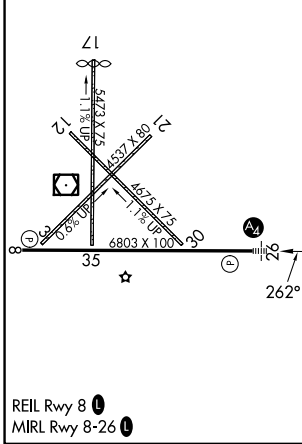
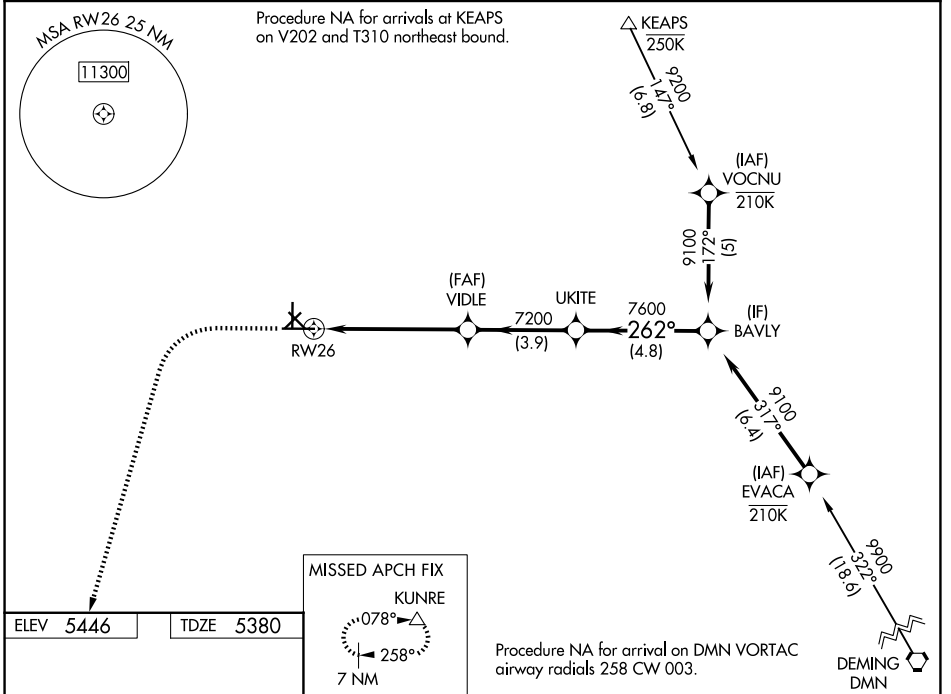
| | | |
|--|------------------------|---|
| WAAS CH 87100 W26A | APP CRS 262° | Rwy Ldg TDZE 5380 Apt Elev 5446 |
|--|------------------------|---|

RNAV (GPS) RWY 26

GRANT COUNTY (SVC)

| | | |
|---|-----------|--|
| RNP APCH-GPS. ⚠ Circling NA to Rwys 3, 12, 17, 21, 30 and 35. Inop table does not apply to LPV and LNAV/VNAV. For uncompensated Baro-VNAV systems, LNAV/VNAV NA below -25°C or above 54°C. | MALS ⚠ | MISSED APPROACH: Climb to 5900 then climbing left turn to 10000 direct KUNRE and hold. |
|---|-----------|--|

| | | |
|--------------------------|--|---------------------------------|
| AWOS-3 126.725 | ALBUQUERQUE CENTER 134.45 327.15 | UNICOM 122.8 (CTAF) ① |
|--------------------------|--|---------------------------------|



| CATEGORY | A | B | C | D |
|--------------|-----------------------------------|---|--|--|
| LPV DA | | 5630- ³ / ₄ | 250 (200- ³ / ₄) | |
| LNAV/VNAV DA | | 5630- ³ / ₄ | 250 (200- ³ / ₄) | |
| LNAV MDA | 5940- ³ / ₄ | 560 (500- ³ / ₄) | 5940-1 ³ / ₈ | 560 (500-1 ¹ / ₈) |
| CIRCLING | 5940-1 494 (500-1) | 5960-1 514 (600-1) | 6100-1 ³ / ₄ 654 (700-1 ³ / ₄) | 6740-3 1294 (1300-3) |

SW-1, 14 MAY 2026 to 11 JUN 2026

SW-1, 14 MAY 2026 to 11 JUN 2026