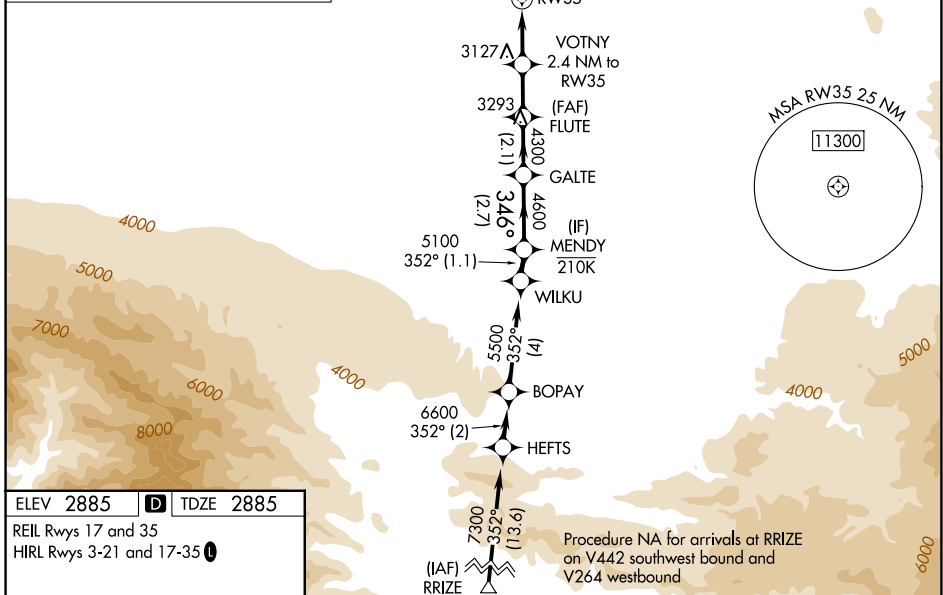
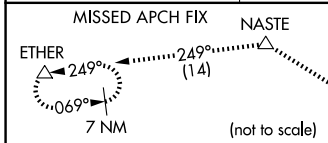


WAAS CH 97746 W35A	APP CRS 346°	Rwy Ldg TDZE 2885 Apt Elev 2885	13052 2885 2885
--	------------------------	---	--

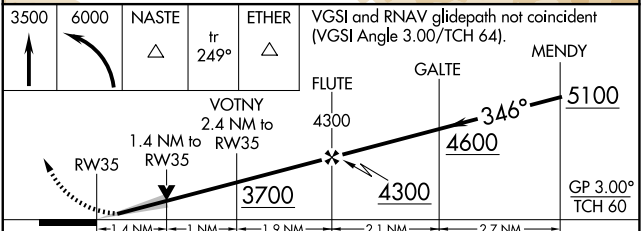
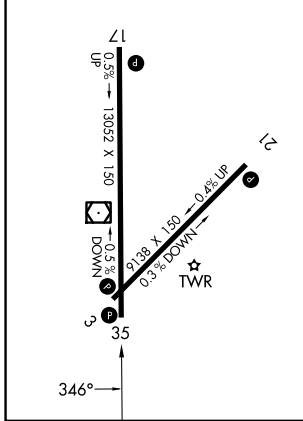
RNAV (GPS) RWY 35

SOUTHERN CALIFORNIA LOGISTICS (V_{CV})

RNP APCH - GPS.		MISSED APPROACH: Climb to 3500 then climbing left turn to 6000 direct NASTE and on track 249° to ETHER and hold.	
<p>⚠ Circling NA for C and D southeast of Rws 35 and 21. ⚠ For uncompensated Baro-VNAV systems, LNAV/VNAV NA below -20°C or above 54°C.</p>	<p>ATIS 135,475</p>	<p>JOSHUA APP CON 124.55 363.0</p>	<p>VICTORVILLE TOWER ★ 118.35(CTAF) 282.225</p>
		<p>GND CON 124.45</p>	



ELEV 2885	D	TDZE 2885
REIL Rws 17 and 35		
HIRL Rws 3-21 and 17-35		



CATEGORY	A	B	C	D
LPV DA		3085-1	200 (200-1)	
LNAV/VNAV DA		3411-1½	526 (600-1½)	
LNAV MDA	3380-1	495 (500-1)	3380-1⅓	495 (500-1⅓)
CIRCLING	3380-1 495 (500-1)	3420-1 535 (600-1)	3460-1½ 575 (600-1½)	3760-2¾ 875 (900-2¾)

SW-3, 14 MAY 2026 to 11 JUN 2026

SW-3, 14 MAY 2026 to 11 JUN 2026