

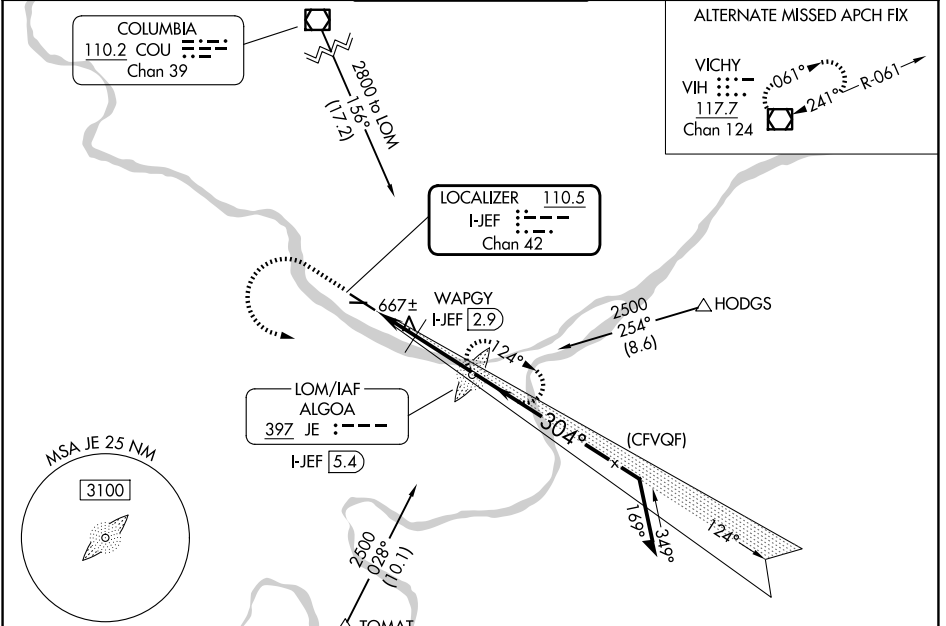
LOC/DME I-JEF 110.5 Chan 42	APP CRS 304°	Rwy Ldg TDZE Apt Elev	6000 549 549
-------------------------------------------------	------------------------	-----------------------------	-----------------------------------------

ILS or LOC RWY 30

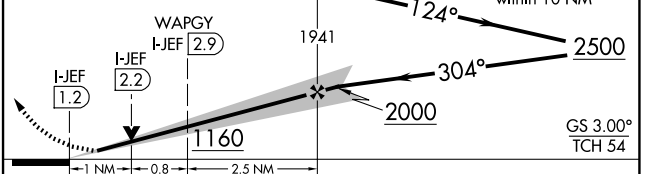
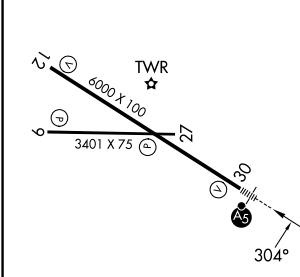
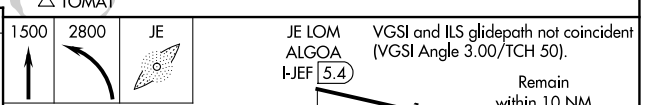
JEFFERSON CITY MEML (JEF)

ADF required.	MALSR	MISSED APPROACH: Climb to 1500 then climbing left turn to 2800 direct ALGOA LOM and hold, continue climb-in-hold to 2800.
<p>⚠ Circling Rwy 9 NA at night. For inop ALS increase S-LOC 30 Cats C/D visibility to 1 3/4 SM and WAPGY fix minimums: S-LOC 30 Cats C/D visibility to 1 SM.</p>		

ASOS 133.625	MIZZU APP CON 124,375 353,925	JEFFERSON CITY TOWER* 125.6 (CTAF) 0	GND CON 121.7	UNICOM 122.95
------------------------	-----------------------------------------	-------------------------------------------------------	-------------------------	-------------------------



ELEV 549	TDZE 549
----------	----------



CATEGORY	A	B	C	D
S-ILS 30	749-1/2		200 (200-1/2)	
S-LOC 30	1160-1/2	611 (700-1/2)	1160-1 3/8	611 (700-1 3/8)
CIRCLING	1280-1	731 (800-1)	1320-2 1/4 771 (800-2 1/4)	1560-3 1011 (1100-3)
WAPGY FIX MINIMUMS				
S-LOC 30	920-1/2	371 (400-1/2)	920-5/8	371 (400-5/8)
CIRCLING	1280-1	731 (800-1)	1320-2 1/4 771 (800-2 1/4)	1560-3 1011 (1100-3)

HIRL Rwy 12-30
MIRL Rwy 9-27
REIL Rwys 9, 12, and 27

FAF to MAP 4.2 NM

Knots	60	90	120	150	180
Min:Sec	4:12	2:48	2:06	1:41	1:24

NC-3, 14 MAY 2026 to 11 JUN 2026

NC-3, 14 MAY 2026 to 11 JUN 2026