

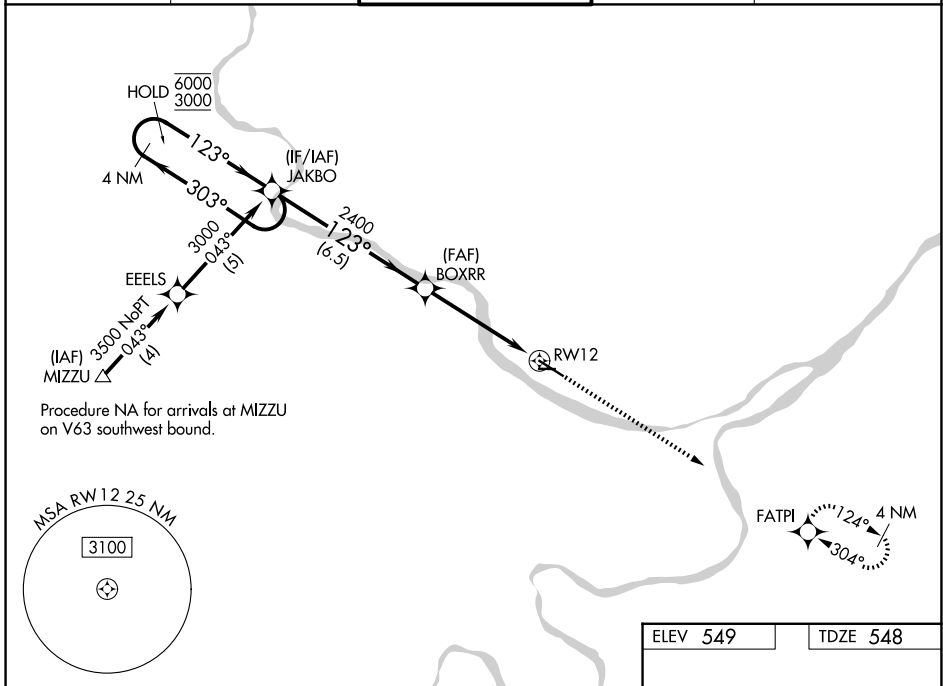
WAAS CH <b>49005</b> <b>W12A</b>	APP CRS <b>123°</b>	Rwy Ldg TDZE <b>548</b> Apt Elev <b>549</b>
--	------------------------	---

# RNAV (GPS) RWY 12

JEFFERSON CITY MEML (JEF)

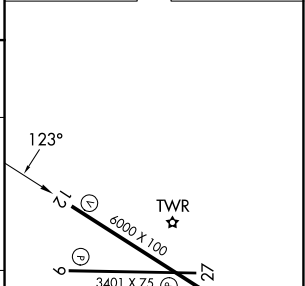
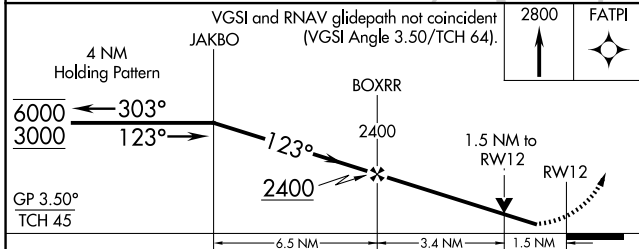
RNP APCH - GPS.	MISSED APPROACH: Climb to 2800 direct FATPI and hold.
<p>▼ For uncompensated Baro-VNAV systems, LNAV/VNAV NA below -16°C or above 48°C. Rwy 12 helicopter visibility reduction below ¼ SM NA. Circling Rwy 9 NA at night.</p>	

ASOS <b>133.625</b>	MIZU APP CON <b>124.375 353.925</b>	JEFFERSON CITY TOWER ★ <b>125.6 (CTAF) 0</b>	GND CON <b>121.7</b>	UNICOM <b>122.95</b>
------------------------	--	---	-------------------------	-------------------------



Procedure NA for arrivals at MIZU on V63 southwest bound.

ELEV 549	TDZE 548
----------	----------



CATEGORY	A	B	C	D
LPV DA	874-1 326 (400-1)			
LNAV/VNAV DA	964-1½ 416 (500-1½)			
LNAV MDA	1160-1 612 (700-1)	1160-1¾ 612 (700-1¾)		
CIRCLING	1240-1 691 (700-1)	1320-2¼ 771 (800-2¼)	1560-3 1011 (1100-3)	

REIL Rwy 9, 12, and 27 0  
MIRL Rwy 9-27  
HIRL Rwy 12-30 0

NC-3, 14 MAY 2026 to 11 JUN 2026

NC-3, 14 MAY 2026 to 11 JUN 2026