

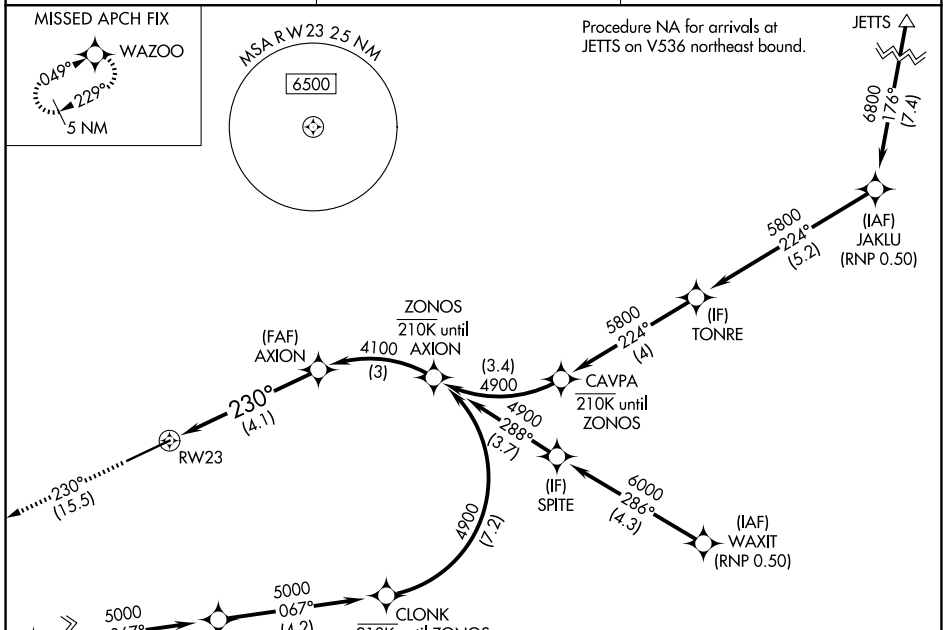
APP CRS	Rwy Ldg	<b>7100</b>
<b>230°</b>	TDZE	<b>2552</b>
	Apt Elev	<b>2567</b>

# RNAV (RNP) Z RWY 23

PULLMAN/MOSCOW RGNL (PUW)

RNP AR APCH. RF required.	MISSED APPROACH: Climb to 5000 on track 230° to WAZOO and hold.
<p>▼ For uncompensated Baro-VNAV systems, procedure NA below -20°C or above 50°C.</p> <p>▲ NA</p>	

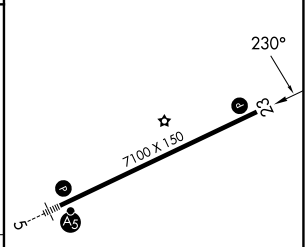
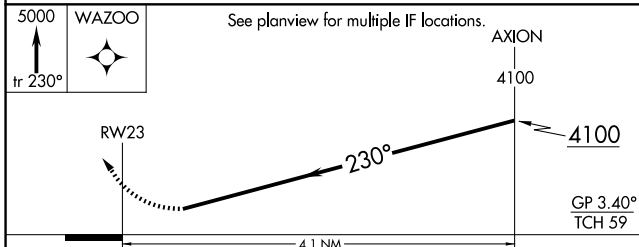
ASOS <b>135.675</b>	SEATTLE CENTER <b>123.95 290.55</b>	UNICOM <b>122.8 (CTAF) 0</b>
------------------------	----------------------------------------	---------------------------------



NW-1, 14 MAY 2026 to 11 JUN 2026

NW-1, 14 MAY 2026 to 11 JUN 2026

ELEV 2567	<b>D</b>	TDZE 2552
-----------	----------	-----------



CATEGORY	A	B	C	D
RNP 0.22 DA		3041-1 <sup>3</sup> / <sub>8</sub>	489 (500-1 <sup>3</sup> / <sub>8</sub> )	
RNP 0.30 DA		3146-1 <sup>3</sup> / <sub>4</sub>	594 (600-1 <sup>3</sup> / <sub>4</sub> )	

**AUTHORIZATION REQUIRED**

REIL Rwy 23 **0**  
HIRL Rwy 5-23 **0**