

WAAS CH <b>69401</b> <b>W17A</b>	APP CRS <b>175°</b>	Rwy Ldg <b>6002</b> TDZE <b>541</b> Apt Elev <b>548</b>
--	------------------------	---

# RNAV (GPS) RWY 17

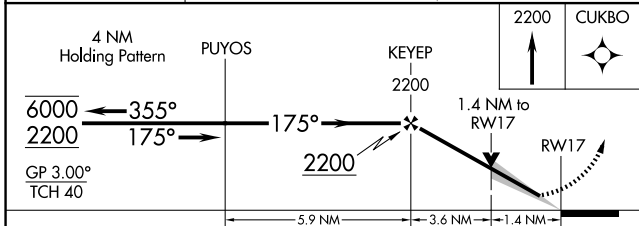
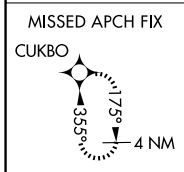
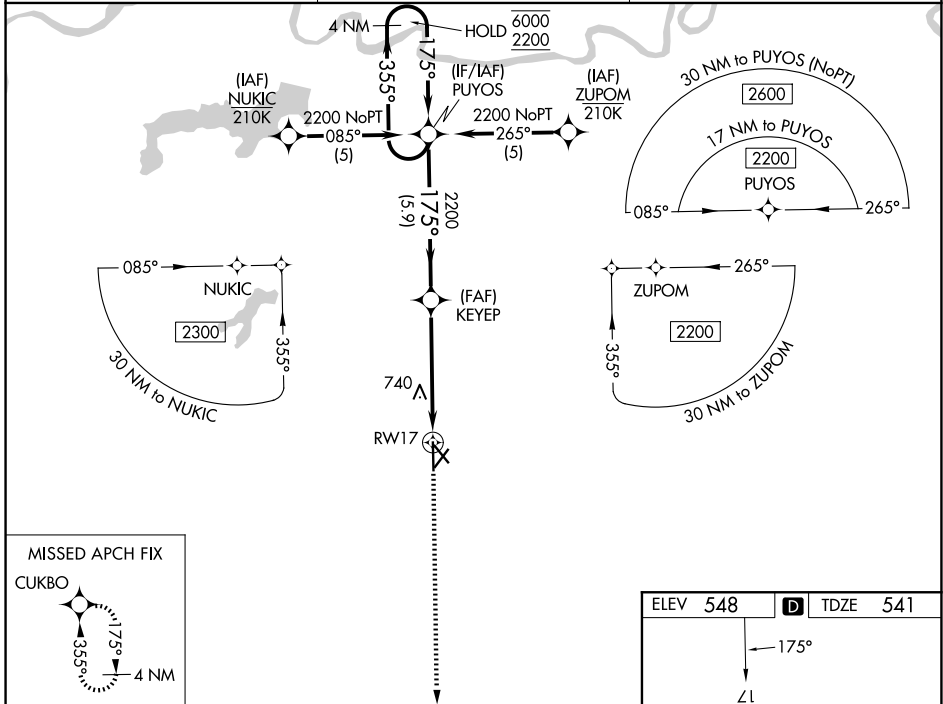
COX FLD (PRX)

RNP APCH - GPS.

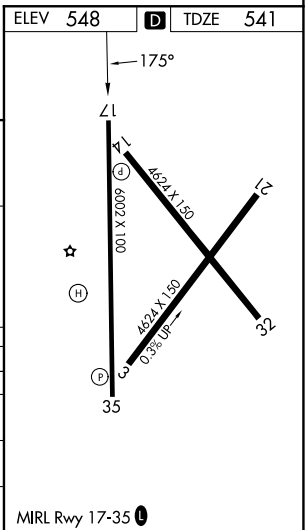
**⚠** Baro-VNAV and VDP NA when using SLR altimeter setting. For uncompensated Baro-VNAV systems, LNAV/VNAV NA below -8°C or above 54°C. When local altimeter setting not received, use SLR altimeter setting and increase LPV DA to 868 feet and all visibilities ¼ SM. Increase LNAV/VNAV DA to 1016 feet and all visibilities ¼ SM. Increase all MDAs 80 feet and LNAV visibility Cat C/D ¼ SM, and Circling visibility Cat C/D ¼ SM.

**MISSED APPROACH:**  
Climb to 2200 direct CUKBO and hold.

AWOS-3PT <b>119.675</b>	FORT WORTH CENTER <b>124.875 370.95</b>	UNICOM <b>122.975 (CTAF)</b>
----------------------------	--	---------------------------------



CATEGORY	A	B	C	D
LPV DA		791-3/4	250 (300-3/4)	
LNAV/VNAV DA		939-1 1/8	398 (400-1 1/8)	
LNAV MDA	1040-1	499 (500-1)	1040-1 3/8	499 (500-1 3/8)
CIRCLING	1060-1	512 (600-1)	1100-1 1/2 552 (600-1 1/2)	1220-2 1/4 672 (700-2 1/4)



SC-2, 14 MAY 2026 to 11 JUN 2026

SC-2, 14 MAY 2026 to 11 JUN 2026