

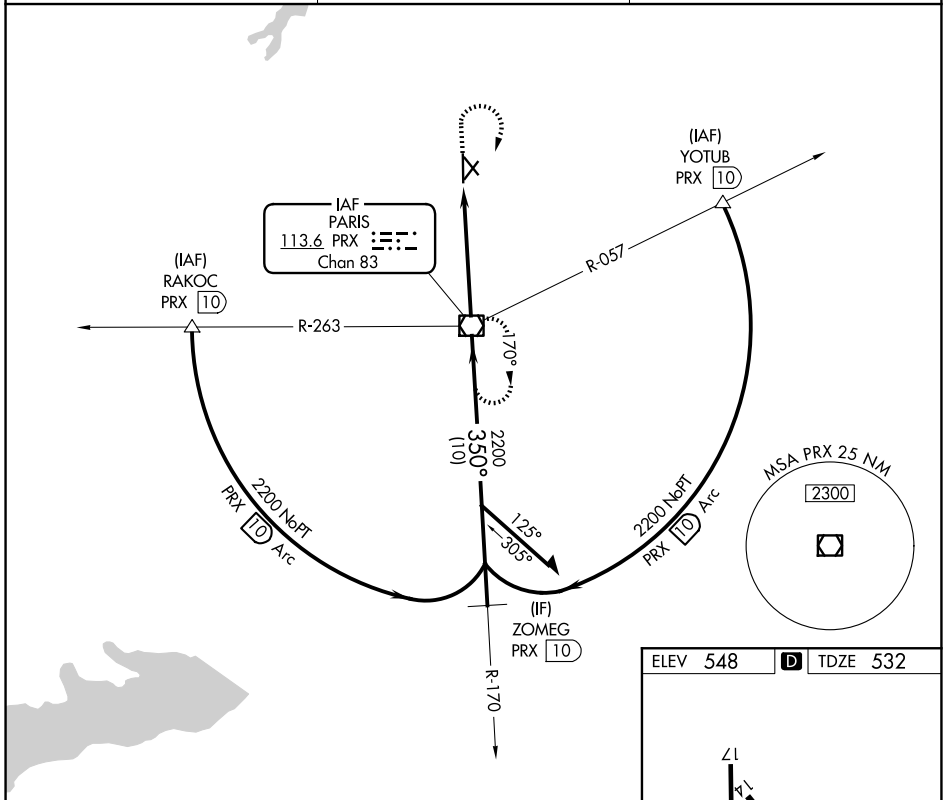
VOR/DME PRX <b>113.6</b> Chan <b>83</b>	APP CRS <b>350°</b>	Rwy Ldg TDZE Apt Elev	<b>6002</b> <b>532</b> <b>548</b>
---	------------------------	-----------------------------	---

# VOR RWY 35

COX FLD (PRX)

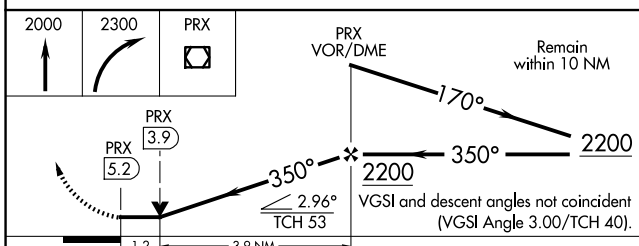
**▼** Rwy 35 helicopter visibility reduction below 3/4 SM NA.  
**▲** MISSED APPROACH: Climb to 2000 then climbing right turn to 2300 direct PRX VOR/DME and hold.

AWOS-3PT <b>119.675</b>	FORT WORTH CENTER <b>124.875 370.95</b>	UNICOM <b>122.975 (CTAF)</b> <b>0</b>
----------------------------	--	--

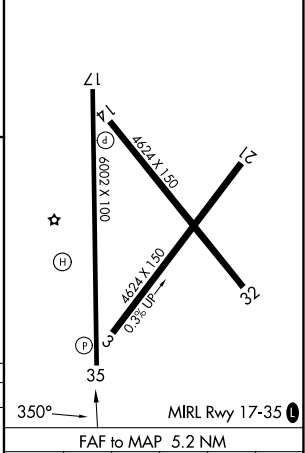


SC-2, 14 MAY 2026 to 11 JUN 2026

SC-2, 14 MAY 2026 to 11 JUN 2026



ELEV 548	<b>D</b> TDZE 532
----------	-------------------



CATEGORY	A	B	C	D
S-35	960-1 428 (500-1)		960-1 1/4 428 (500-1 1/4)	
CIRCLING	1060-1 512 (600-1)		1100-1 1/2 552 (600-1 1/2)	1220-2 1/4 672 (700-2 1/4)

Knots				
60	90	120	150	180
Min:Sec				
5:12	3:28	2:36	2:05	1:44