

RNAV 1 - DME/DME/IRU or GPS.
RADAR required.

TOP ALTITUDE:
17000

POTOMAC DEP CON
128.7 307.9
D-ATIS
115.1 127.8
CLNIC DEL
118.05
CPDLC
GND CON
121.9
BALTIMORE TOWER
119.4 257.8

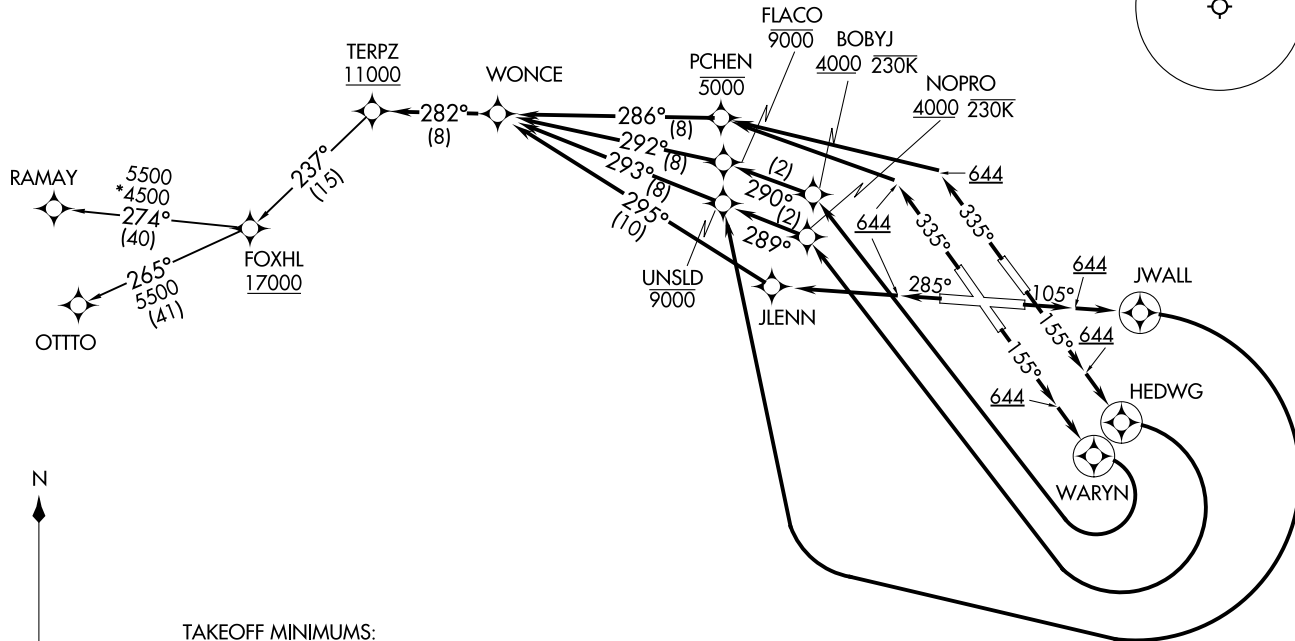
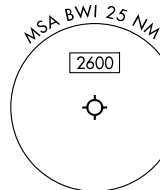
FOXHL ONE DEPARTURE (RNAV)
(FOXHL1.FOXHL) 11 JUL 24

(FOXHL1.FOXHL) 24193

AL-804 (FAA)

BALTIMORE/
WASHINGTON INTL THURGOOD MARSHALL (BWI)

BALTIMORE, MARYLAND



TAKEOFF MINIMUMS:
Rwy 15R: Standard with minimum climb of 780'/NM to 644.
Rwys 10, 15L, 28, 33L/R: Standard with minimum climb
of 500'/NM to 644.

NOTE: Chart not to scale.

NOTE: Jet aircraft only.
(CONTINUED ON FOLLOWING PAGE)

BALTIMORE/
WASHINGTON INTL THURGOOD MARSHALL (BWI)



DEPARTURE ROUTE DESCRIPTION

TAKEOFF RUNWAY 10: Climb on heading 105° to 644, then direct JWALL, then right turn direct UNSLD at or below 9000, then on track 293° to WONCE, then on track 282° to cross TERPZ at or above 11000, thence....

TAKEOFF RUNWAY 15L: Climb on heading 155° to 644, then direct HEDWG, then right turn direct NOPRO at or above 4000 and at or below 230K, then on track 289° to cross UNSLD at or below 9000, then on track 293° to WONCE, then on track 282° to cross TERPZ at or above 11000, thence....

TAKEOFF RUNWAY 15R: Climb on heading 155° to 644, then direct WARYN, then right turn direct BOBYJ at or above 4000 at or below 230K, then on track 290° to cross FLACO at or below 9000, then on track 292° to WONCE, then on track 282° to cross TERPZ at or above 11000, thence....

TAKEOFF RUNWAY 28: Climb on heading 285° to 644, then direct JLENN, then on track 295° to WONCE, then on track 282° to cross TERPZ at or above 11000, thence....

TAKEOFF RUNWAYS 33L/R: Climb on heading 335° to 644, then left turn direct PCHEN at or below 5000, then on track 285° to WONCE, then on track 282° to cross TERPZ at or above 11000, thence....

...then on track 237° to cross FOXHL at or above 17000, then on assigned transition. Maintain 17000, expect filed altitude 10 minutes after departure.

ALL AIRCRAFT ATC CLIMB GRADIENT: If unable to accept climb rate advise ATC prior to taxi. Runway 15R: 780'/NM to 644' MSL.

OTTO TRANSITION (FOXHL1.OTTO)

RAMAY TRANSITION (FOXHL1.RAMAY)

NE-3, 14 MAY 2026 to 11 JUN 2026

NE-3, 14 MAY 2026 to 11 JUN 2026