

LOC I-OEH	APP CRS	Rwy Ldg	<b>9803</b>
<b>109.7</b>	<b>285°</b>	TDZE	<b>143</b>
		Apt Elev	<b>143</b>

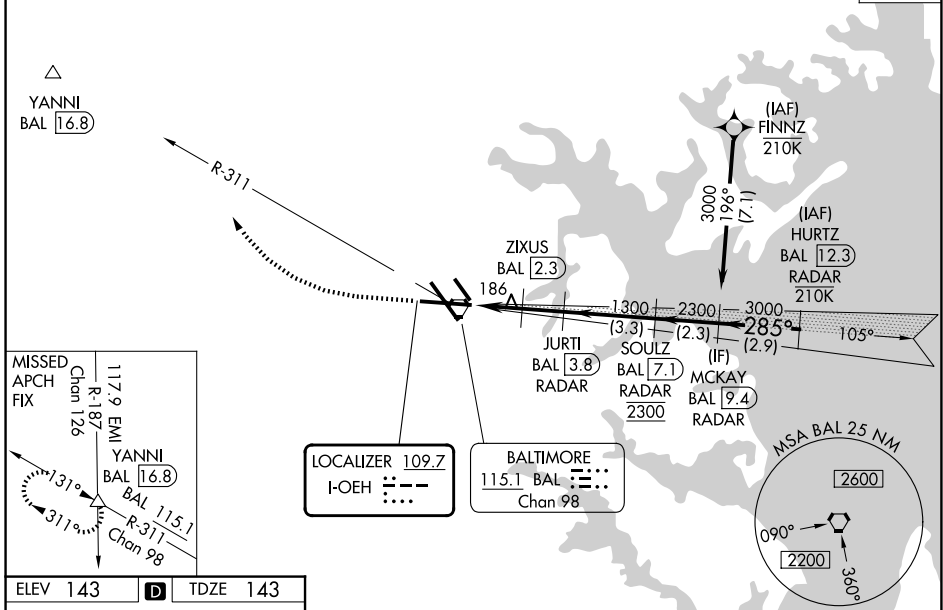
BALTIMORE/  
WASHINGTON INTL THURGOOD MARSHALL (BWI)

# ILS or LOC RWY 28

DME or RADAR required.		MALSR	MISSED APPROACH: Climb to 1500 then climbing right turn to 2600 on heading 319° and BAL VORTAC R-311 to YANNI INT/ BAL 16.8 DME and hold.
<p>▼ For inop ALS, increase S-LOC 28 Cat C/D visibility to 1 3/8 SM and increase ZIXUS fix S-LOC 28 Cat C/D visibility to RVR 4500.</p> <p>▲ *RVR 1800 authorized with use of FD or AP or HUD to DA.</p>			

D-ATIS	POTOMAC APP CON	BALTIMORE TOWER	GND CON	CLNC DEL
<b>115.1 127.8</b>	<b>119.0 282.275</b> (020°-100°) <b>119.7 290.475</b> (101°-130°) <b>128.7 307.9</b> (181°-019°)	<b>119.4 257.8</b>	<b>121.9</b>	<b>118.05</b>

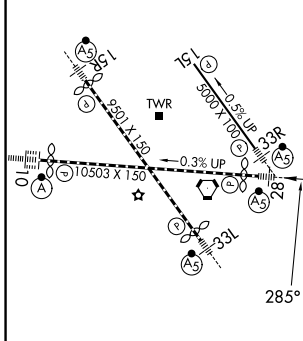
CPDLC



NE-3, 14 MAY 2026 to 11 JUN 2026

NE-3, 14 MAY 2026 to 11 JUN 2026

ELEV 143	<b>D</b>	TDZE 143
----------	----------	----------



TDZ/CL Rwy 10 and 33L					
REIL Rwy 15L and 33R					
HIRL all Rwy					
FAF to MAP 3.5 NM					
Knots	60	90	120	150	180
Min:Sec	3:30	2:20	1:45	1:24	1:10

CATEGORY	A		B		C		D
S-ILS 28 *	343/24 200 (200-1/2)						
S-LOC 28	620/24		477 (500-1/2)		620/50		477 (500-1)
CIRCLING	660-1		517 (600-1)		700-1 1/2		880-2 1/4
ZIXUS FIX MINIMUMS (DME REQUIRED)							
S-LOC 28	460/24 317 (400-1/2)						
CIRCLING	660-1		517 (600-1)		700-1 1/2		880-2 1/4

# ILS or LOC RWY 28