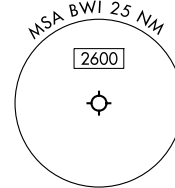


RNAV 1 - DME/DME/IRU or GPS.  
RADAR required.

POTOMAC DEP CON  
128.7 307.9  
D-ATIS  
115.1 127.8  
CLNC DEL  
118.05  
CPDLC  
GND CON  
121.9  
BALTIMORE TOWER  
119.4 257.8

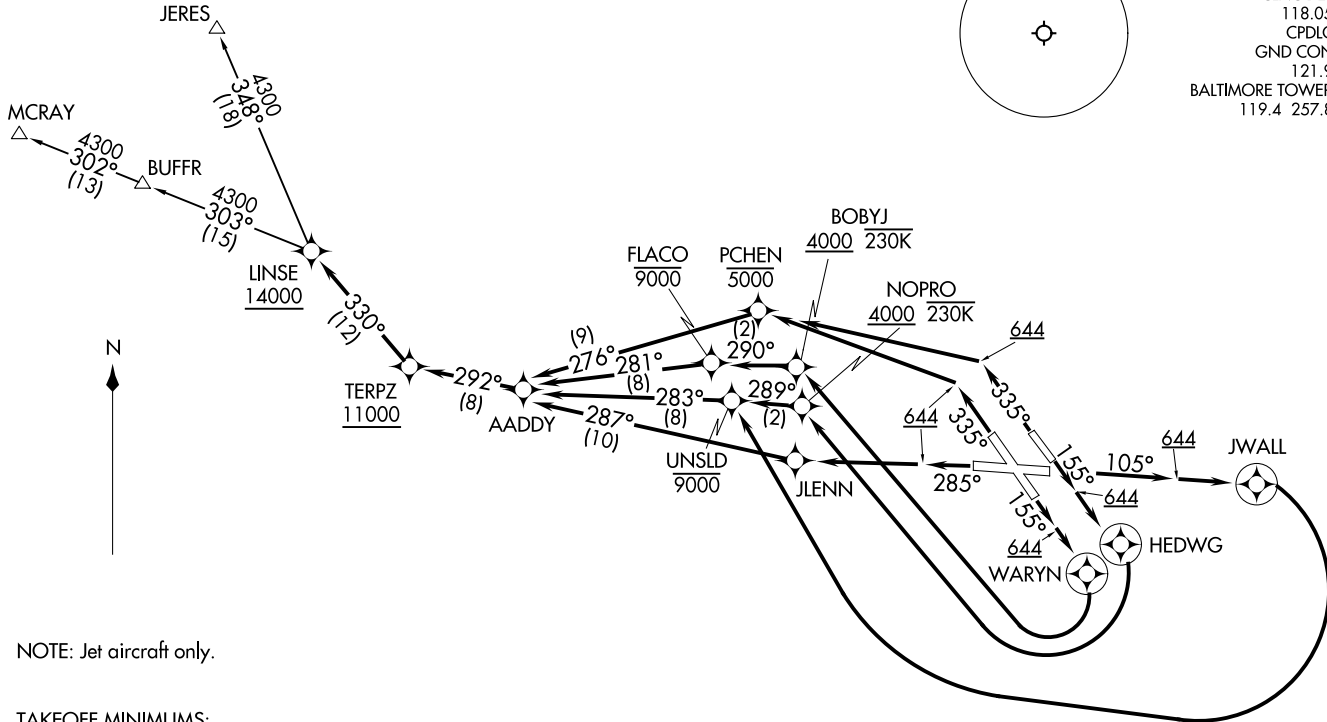


**TOP ALTITUDE:  
16000**

INSE TWO DEPARTURE (RNAV)  
(INSE2, INSE) 20FEB25

(INSE2, INSE) 25051  
INSE TWO DEPARTURE (RNAV)

BALTIMORE/  
WASHINGTON INTL THURGOOD MARSHALL (BWI)  
AL-804 (FAA)  
BALTIMORE, MARYLAND



NOTE: Jet aircraft only.

**TAKEOFF MINIMUMS:**

Rwy 15R: Standard with minimum climb of 780'/NM to 644.  
Rwys 10, 15L, 28, 33L/R: Standard with minimum climb of 500'/NM to 644.

(CONTINUED ON FOLLOWING PAGE)

NOTE: Chart not to scale.

BALTIMORE/  
WASHINGTON INTL THURGOOD MARSHALL (BWI)  
BALTIMORE, MARYLAND

(LINSE2.LINSE) 25051

# LINSE TWO DEPARTURE (RNAV)

BALTIMORE/  
WASHINGTON INTL THURGOOD MARSHALL (BWI)  
AL-804 (FAA) BALTIMORE, MARYLAND

## DEPARTURE ROUTE DESCRIPTION



TAKEOFF RUNWAY 10: Climb on heading 105° to 644, then direct JWALL, then right turn direct UNSLD at or below 9000, then on track 283° to AADDY, then on track 292° to cross TERPZ at or above 11000, thence....

TAKEOFF RUNWAY 15L: Climb on heading 155° to 644, then direct HEDWG, then right turn direct NOPRO at or above 4000 and at or below 230K, then on track 289° to cross UNSLD at or below 9000, then on track 283° to AADDY, then on track 292° to cross TERPZ at or above 11000, thence....

TAKEOFF RUNWAY 15R: Climb on heading 155° to 644, then direct WARYN, then right turn direct BOBYJ at or above 4000 at or below 230K, then on track 290° to cross FLACO at or below 9000, then on track 281° to AADDY, then on track 292° to cross TERPZ at or above 11000, thence....

TAKEOFF RUNWAY 28: Climb on heading 285° to 644, then direct JLENN, then on track 287° to AADDY, then on track 292° to cross TERPZ at or above 11000, thence....

TAKEOFF RUNWAYS 33L/R: Climb on heading 335° to 644, then left turn direct PCHEN at or below 5000, then on track 276° to AADDY, then on track 292° to cross TERPZ at or above 11000, thence....

...then on track 330° to cross LINSE at or above 14000. Then on assigned transition. Maintain 16000, expect filed altitude 10 minutes after departure.

ALL AIRCRAFT ATC CLIMB GRADIENT: If unable to accept climb rate advise ATC prior to taxi. Rwy 15R: 780'/NM until 644' MSL.

JERES TRANSITION (LINSE2.JERES)

MCRAV TRANSITION (LINSE2.MCRAV)

NE-3, 14 MAY 2026 to 11 JUN 2026

NE-3, 14 MAY 2026 to 11 JUN 2026

LINSE TWO DEPARTURE (RNAV)  
(LINSE2.LINSE) 20FEB25

BALTIMORE/  
WASHINGTON INTL THURGOOD MARSHALL (BWI)  
BALTIMORE, MARYLAND