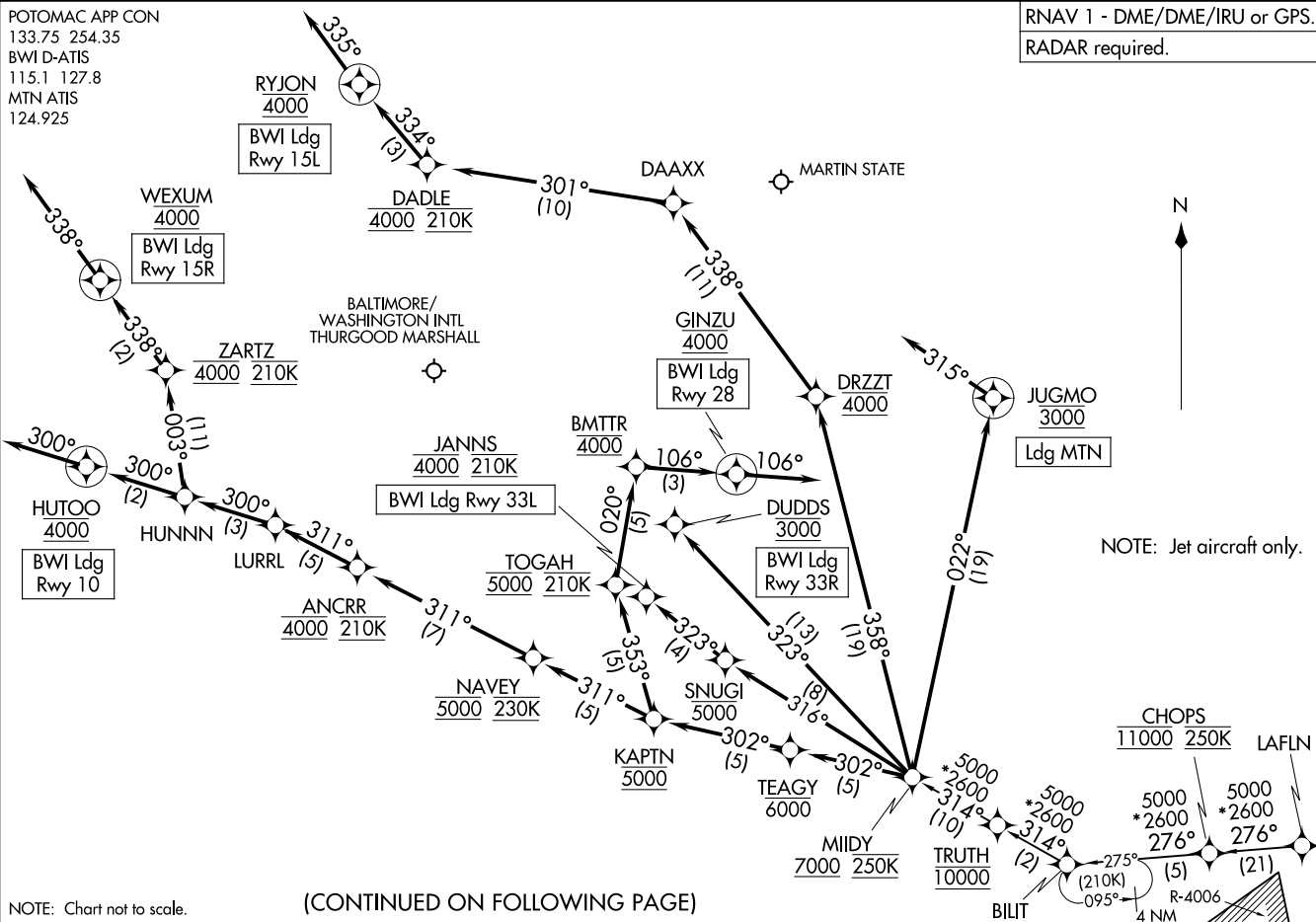


RNAV 1 - DME/DME/IRU or GPS.  
RADAR required.

(MIDY.MIIDY4) 26134  
MIDY FOUR ARRIVAL (RNAV)

AL-804 (FAA)

BALTIMORE, MARYLAND



NOTE: Chart not to scale.

(CONTINUED ON FOLLOWING PAGE)

NOTE: Jet aircraft only.

MIDY FOUR ARRIVAL (RNAV)  
(MIDY.MIIDY4) 14MAY26

BALTIMORE, MARYLAND

ARRIVAL ROUTE DESCRIPTION

LAFLN TRANSITION (LAFLN.MIIDY4)

LANDING BWI RUNWAY 10: From MIIDY on track 302° to cross TEAGY at or below 6000, then on track 302° to cross KAPTN at 5000, then on track 311° to cross NAVEY at 5000 and at 230K, then on track 311° to cross ANCRR at 4000 and at 210K, then on track 311° to LURRL, then on track 300° to HUNNN, then on track 300° to cross HUTOO at 4000, then on track 300°. Expect RADAR vectors to final approach course.

LANDING BWI RUNWAY 15L: From MIIDY on track 358° to cross DRZZT at 4000, then on track 338° to DAAXX, then on track 301° to cross DADLE at 4000 and at 210K, then on track 334° to cross RYJON at 4000, then on track 335°. Expect RADAR vectors to final approach course.

LANDING BWI RUNWAY 15R: From MIIDY on track 302° to cross TEAGY at or below 6000, then on track 302° to cross KAPTN at 5000, then on track 311° to cross NAVEY at 5000 and at 230K, then on track 311° to cross ANCRR at 4000 and at 210K, then on track 311° to LURRL, then on track 300° to HUNNN, then on track 003° to cross ZARTZ at 4000 and at 210K, then on track 338° to cross WEXUM at 4000, then on track 338°. Expect RADAR vectors to final approach course.

LANDING BWI RUNWAY 28: From MIIDY on track 302° to cross TEAGY at or below 6000, then on track 302° to cross KAPTN at 5000, then on track 353° to cross TOGAH at 5000 and at 210K, then on track 020° to cross BMTTR at 4000, then on track 106° to cross GINZU at 4000, then on track 106°. Expect RADAR vectors to final approach course.

LANDING BWI RUNWAY 33L: From MIIDY on track 316° to cross SNUGI at or below 5000, then on track 323° to cross JANNS at 4000 and at 210K. Expect ILS or LOC Rwy 33L approach.

LANDING BWI RUNWAY 33R: From MIIDY on track 323° to cross DUDDS at 3000. Expect ILS or LOC Rwy 33R approach.

LANDING MTN: From MIIDY on track 022° to cross JUGMO at 3000, then on heading 315°. Expect RADAR vectors to final approach course.

NE-3, 14 MAY 2026 to 11 JUN 2026

NE-3, 14 MAY 2026 to 11 JUN 2026