

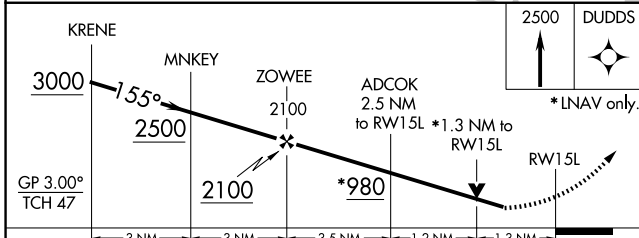
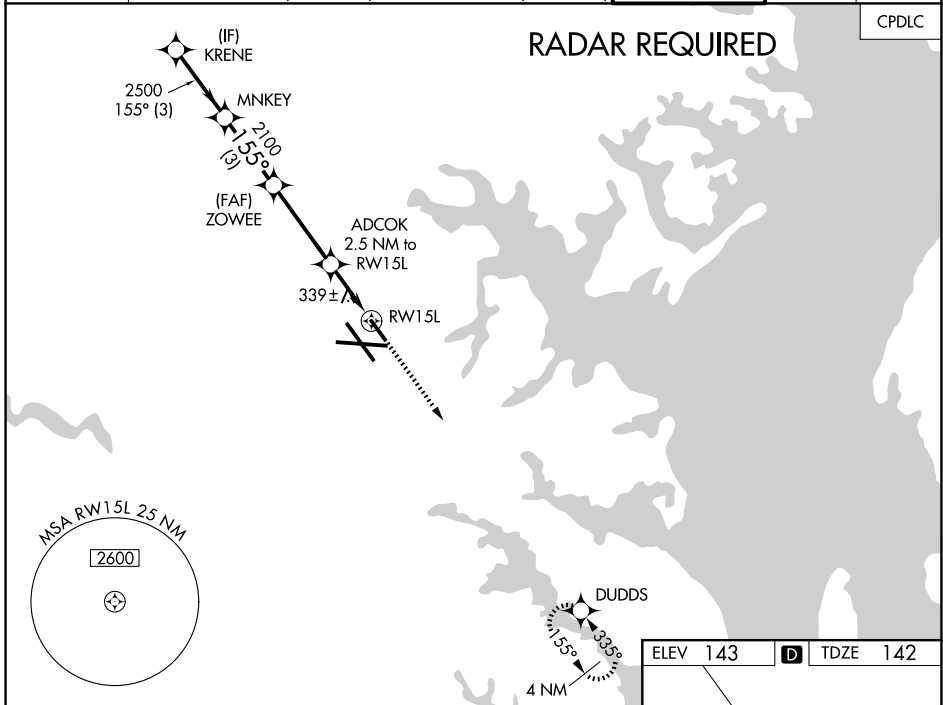
WAAS CH <b>40108</b> <b>W15A</b>	APP CRS <b>155°</b>	Rwy Ldg TDZE Apt Elev	<b>5000</b> <b>142</b> <b>143</b>
--	------------------------	-----------------------------	---

BALTIMORE/ **RNAV (GPS) RWY 15L**  
WASHINGTON INTL THURGOOD MARSHALL (BWI)

▼ For uncompensated Baro-VNAV systems, LNAV/VNAV NA below -13°C (9°F) or above 54°C (130°F). DME/DME RNP-0.3 NA. Helicopter visibility reduction below RVR 4000 NA. Simultaneous approach authorized. Use of FD or AP providing RNAV track guidance required during simultaneous operations. LNAV procedure NA during simultaneous operations.

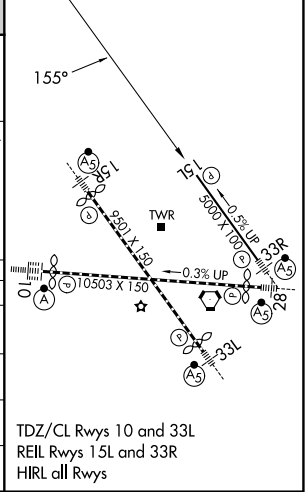
MISSED APPROACH:  
Climb to 2500 direct  
DUDDS and hold.

D-ATIS <b>115.1 127.8</b>	POTOMAC APP CON (020°-100°) <b>119.0 282.275</b> (101°-130°) <b>124.55 317.425</b>	<b>119.7 290.475</b> (131°-180°) <b>128.7 307.9</b> (181°-019°)	<b>BALTIMORE TOWER</b> <b>119.4 257.8</b>	GND CON <b>121.9</b>	CLNC DEL <b>118.05</b>
------------------------------	--	--	--	-------------------------	---------------------------



ELEV <b>143</b>	<b>D</b>	TDZE <b>142</b>
-----------------	----------	-----------------

CATEGORY	A	B	C	D
LPV DA	544-1 $\frac{3}{4}$	402 (500-1 $\frac{1}{2}$ )		NA
LNAV/VNAV DA	656-1 $\frac{3}{4}$	514 (600-1 $\frac{3}{4}$ )		NA
LNAV MDA	600/55	458 (500-1)		NA
CIRCLING	640-1 497 (500-1)	660-1 517 (600-1)		NA



TDZ/CL Rwy 10 and 33L  
REIL Rwy 15L and 33R  
HIRL all Rwy

NE-3, 14 MAY 2026 to 11 JUN 2026

NE-3, 14 MAY 2026 to 11 JUN 2026