

RAVNN NINE ARRIVAL (RNAV) (CAPKO.RAVNN9) 14MAY26

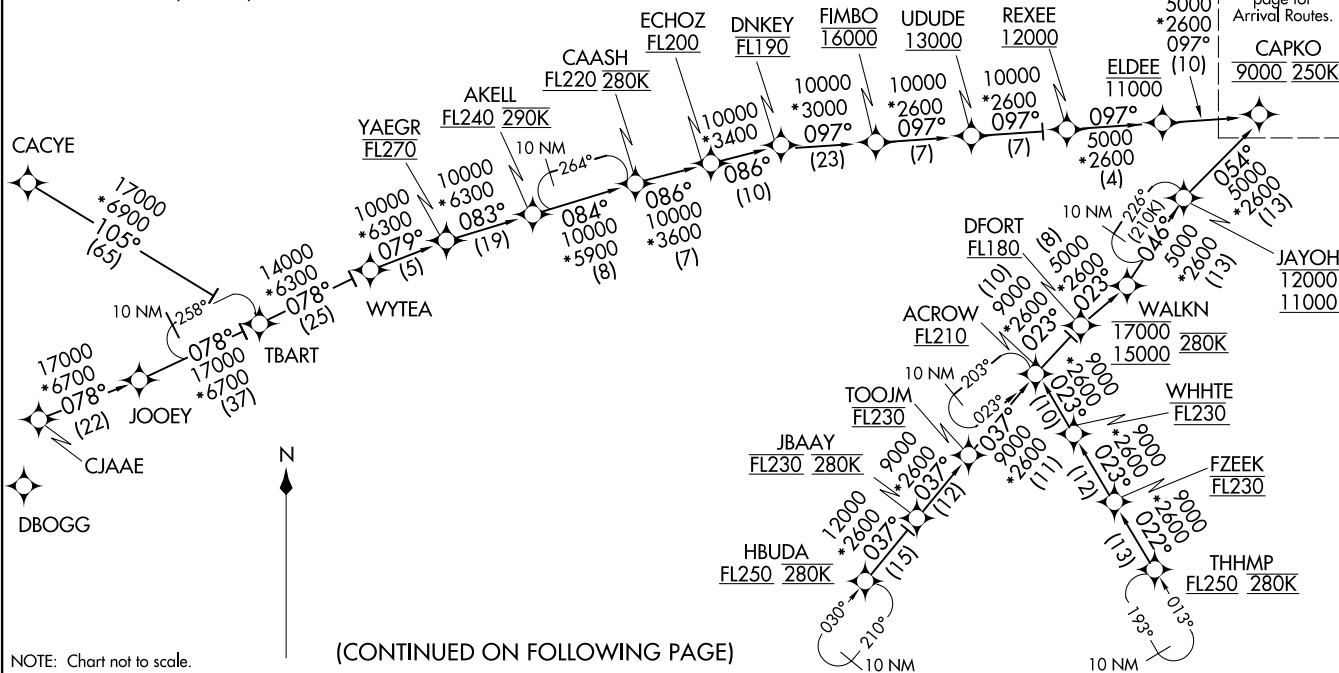
POTOMAC APP CON  
128.35 270.275  
BWI D-ATIS  
115.1 127.8  
MTN ATIS  
124.925

RNAV 1 - DME/DME/IRU or GPS.  
RADAR required.

CACYE TRANSITION (CACYE.RAVNN9)  
CJAAE TRANSITION (CJAAE.RAVNN9)  
HBUDA TRANSITION (HBUDA.RAVNN9): (ATC assigned only).  
JOOEY TRANSITION (JOOEY.RAVNN9): (ATC assigned only).  
THHMP TRANSITION (THHMP.RAVNN9)

NOTE: Jet aircraft only.  
NOTE: All part 91, 101, 103, 105, 125,  
133, 135, and 137 flight  
operations are prohibited on  
the CACYE/CJAAE/JOOEY transitions.

See following  
page for  
Arrival Routes.  
CAPKO  
9000 250K



NOTE: Chart not to scale.

(CONTINUED ON FOLLOWING PAGE)

RAVNN NINE ARRIVAL (RNAV) (CAPKO.RAVNN9) 26134 AL-804 (FAA)

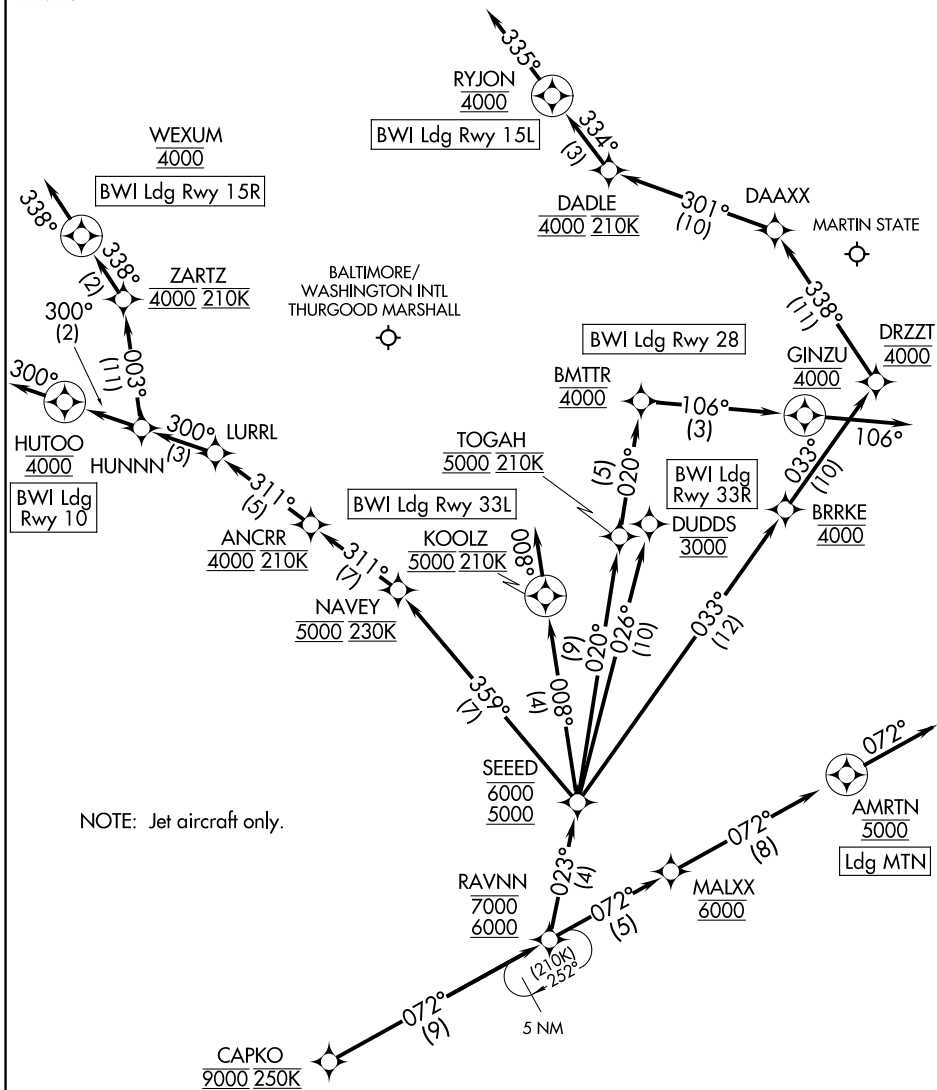
# RAVNN NINE ARRIVAL (RNAV)

## Arrival Routes

BALTIMORE, MARYLAND

POTOMAC APP CON  
 128.35 270.275  
 BWI D-ATIS  
 115.1 127.8  
 MTN ATIS  
 124.925

RNAV 1 - DME/DME/IRU or GPS.  
 RADAR required.



NOTE: Jet aircraft only.

NOTE: Chart not to scale.

(CONTINUED ON FOLLOWING PAGE)

NE-3, 14 MAY 2026 to 11 JUN 2026

NE-3, 14 MAY 2026 to 11 JUN 2026

ARRIVAL ROUTE DESCRIPTION

BWI: From CAPKO on track 072° to cross RAVNN between 6000 and 7000.

LANDING BWI RUNWAY 10: From RAVNN on track 023° to cross SEED between 5000 and 6000, then on track 359° to cross NAVAY at 5000 and at 230K, then on track 311° to cross ANCR at 4000 and at 210K, then on track 311° to LURRL, then on track 300° to HUNNN, then on track 300° to cross HUTOO at 4000, then on track 300°. Expect RADAR vectors to final approach course.

LANDING BWI RUNWAY 15L: From RAVNN on track 023° to cross SEED between 5000 and 6000, then on track 033° to cross BRRKE at 4000, then on track 033° to cross DRZZT at 4000, then on track 338° to DAAX, then on track 301° to cross DADLE at 4000 and at 210K, then on track 334° to cross RYJON at 4000, then on track 335°. Expect RADAR vectors to final approach course.

LANDING BWI RUNWAY 15R: From RAVNN on track 023° to cross SEED between 5000 and 6000, then on track 359° to cross NAVAY at 5000 and at 230K, then on track 311° to cross ANCR at 4000 and at 210K, then on track 311° to LURRL, then on track 300° to HUNNN, then on track 003° to cross ZARTZ at 4000 and at 210K, then on track 338° to cross WEXUM at 4000, then on track 338°. Expect RADAR vectors to final approach course.

LANDING BWI RUNWAY 28: From RAVNN on track 023° to cross SEED between 5000 and 6000, then on track 020° to cross TOGAH at 5000 and at 210K, then on track 020° to cross BMTTR at 4000, then on track 106° to cross GINZU at 4000, then on track 106°. Expect RADAR vectors to final approach course.

LANDING BWI RUNWAY 33L: From RAVNN on track 023° to cross SEED between 5000 and 6000, then on track 008° to cross KOOLZ at 5000 and at 210K, then on track 008°. Expect RADAR vectors to final approach course.

LANDING BWI RUNWAY 33R: From RAVNN on track 023° to cross SEED between 5000 and 6000, then on track 026° to cross DUDDS at 3000. Expect ILS or LOC Rwy 33R approach.

LANDING MTN: From CAPKO on track 072° to cross RAVNN between 6000 and 7000, then on track 072° to cross MALXX at 6000, then on track 072° to cross AMRTN at 5000, then on heading 072°. Expect RADAR vectors to final approach course.

NE-3, 14 MAY 2026 to 11 JUN 2026

NE-3, 14 MAY 2026 to 11 JUN 2026