

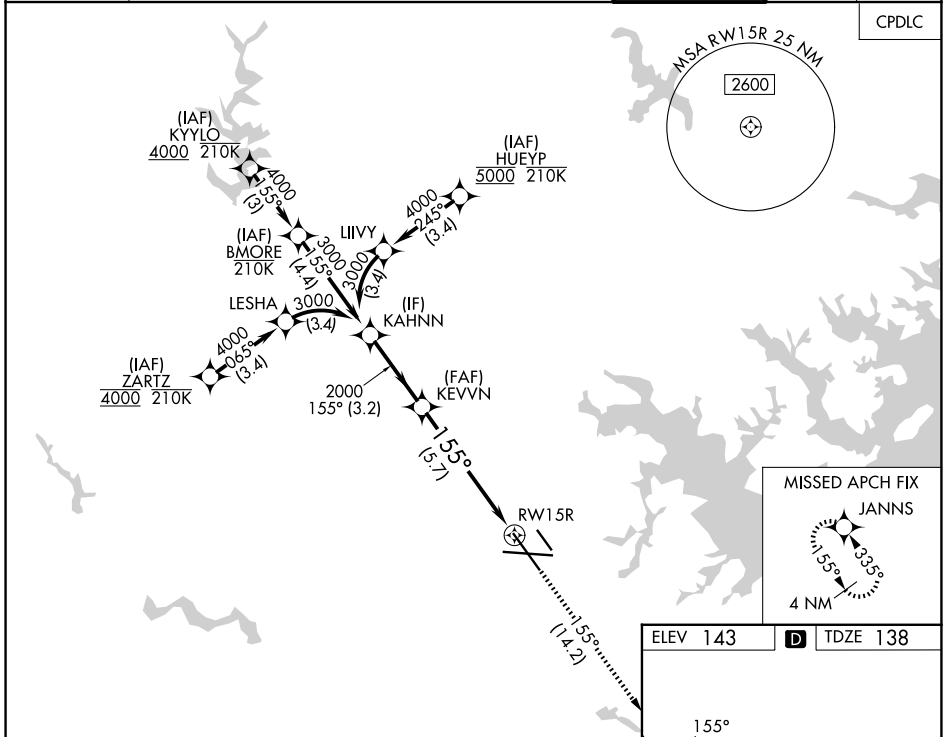
# RNAV (RNP) Z RWY 15R

BALTIMORE/WASHINGTON INTL THURGOOD MARSHALL (BWI)

APP CRS <b>155°</b>	Rwy Ldg TDZE Apt Elev	<b>8301</b> <b>138</b> <b>143</b>
------------------------	-----------------------------	---

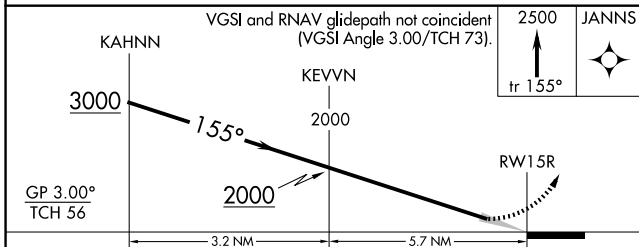
RNP AR APCH - GPS.	MALSR 	MISSED APPROACH: Climb to 2500 on track 155° to JANN5 and hold.
▼ For uncompensated Baro-VNAV systems, procedure NA below -11°C or above 54°C. Simultaneous approach authorized with Rwy 15L. For inop ALS, increase RNP 0.11 DA all Cats visibility to RVR 5500.		

D-ATIS <b>115.1 127.8</b>	POTOMAC APP CON <b>119.0 282.275</b> <b>124.55 317.425</b>	(020°-100°) <b>119.7 290.475</b> (101°-130°) <b>128.7 307.9</b>	(131°-180°) (181°-019°)	BALTIMORE TOWER <b>119.4 257.8</b>	GND CON <b>121.9</b>	CLNC DEL <b>118.05</b>
------------------------------	--	--	----------------------------	---------------------------------------	-------------------------	---------------------------



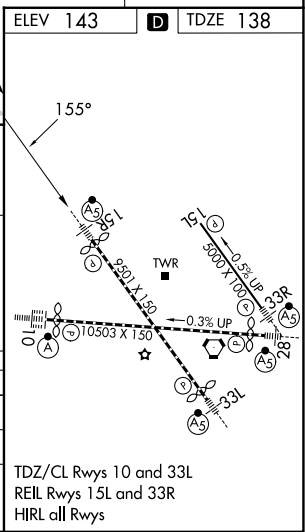
NE-3, 14 MAY 2026 to 11 JUN 2026

NE-3, 14 MAY 2026 to 11 JUN 2026



CATEGORY	A	B	C	D
RNP 0.11 DA		513/35	375 (400-%)	
RNP 0.30 DA		587/45	449 (500-%)	

## AUTHORIZATION REQUIRED



# RNAV (RNP) Z RWY 15R