

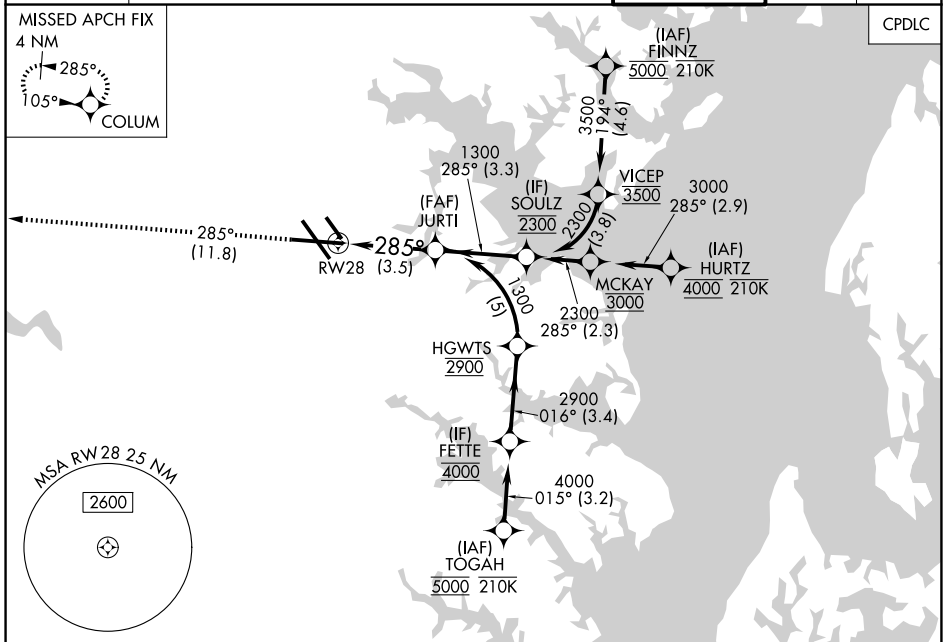
APP CRS <b>285°</b>	Rwy Ldg TDZE Apt Elev	<b>9803</b> <b>143</b> <b>143</b>
------------------------	-----------------------------	---

# RNAV (RNP) Z RWY 28

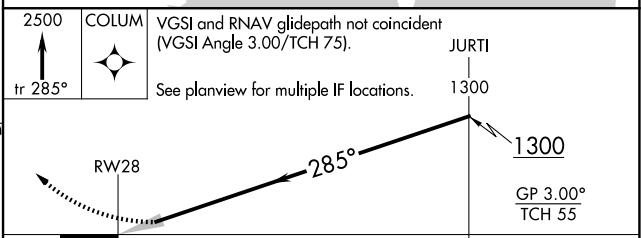
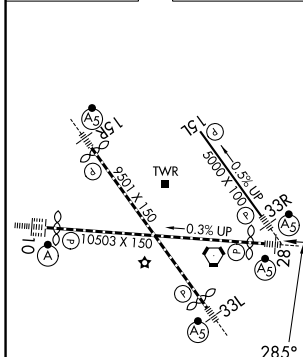
BALTIMORE/WASHINGTON INTL THURGOOD MARSHALL (BWI)

RNP AR APCH - GPS.	MALSR	MISSED APPROACH: Climb to 2500 on track 285° to COLUM and hold.
<p>▼ For uncompensated Baro-VNAV systems, procedure NA below -11°C or above 54°C. For inop ALS, increase RNP 0.30 all Cals visibility to RVR 5500.</p>		

D-ATIS <b>115.1 127.8</b>	POTOMAC APP CON (020°-100°) <b>119.7 290.475</b> (131°-180°) (101°-130°) <b>128.7 307.9</b> (181°-019°)	BALTIMORE TOWER <b>119.4 257.8</b>	GND CON <b>121.9</b>	CLNC DEL <b>118.05</b>
------------------------------	---	---------------------------------------	-------------------------	---------------------------



ELEV 143	<b>D</b>	TDZE 143
----------	----------	----------



CATEGORY	A	B	C	D
RNP 0.30 DA		521/35	378 (400-%)	

**AUTHORIZATION REQUIRED**

TDZ/CL Rws 10 and 33L  
REIL Rws 15L and 33R  
HIRL all Rws

NE-3, 14 MAY 2026 to 11 JUN 2026

NE-3, 14 MAY 2026 to 11 JUN 2026