

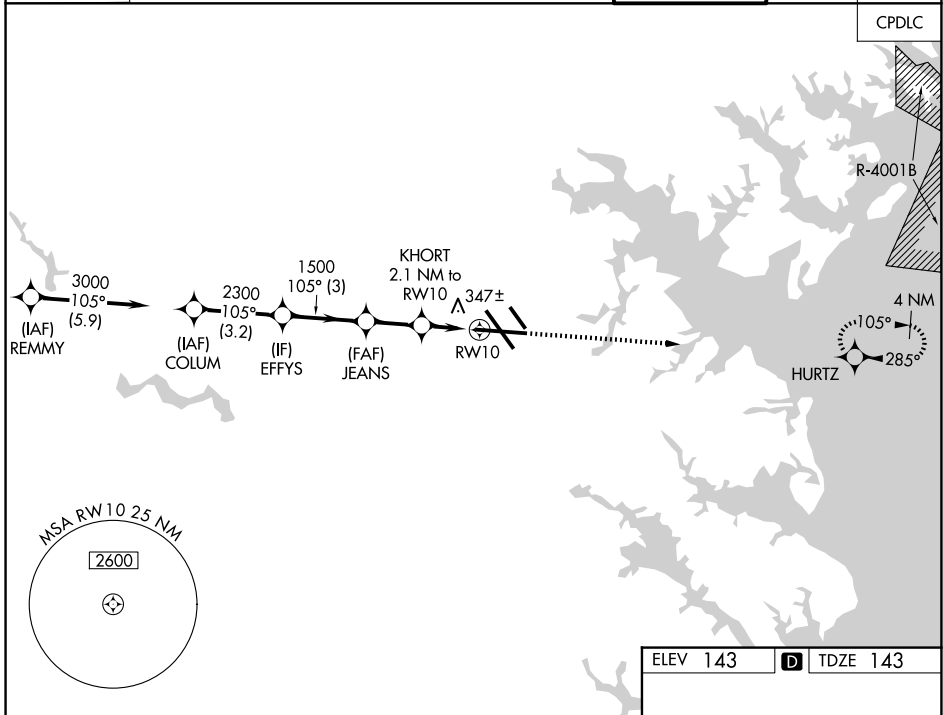
WAAS CH <b>53707</b> <b>W10A</b>	APP CRS <b>105°</b>	Rwy Ldg TDZE <b>143</b> Apt Elev <b>143</b>	<b>9953</b>
--	------------------------	---	-------------

# RNAV (GPS) Y RWY 10

BALTIMORE/WASHINGTON INTL THURGOOD MARSHALL (BWI)

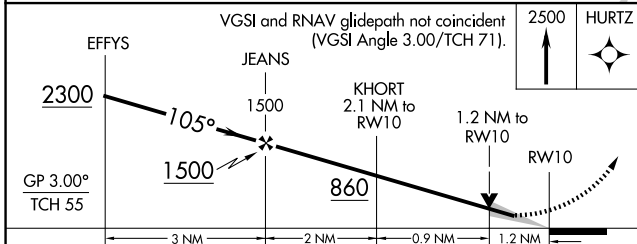
RNP APCH - GPS.	ALSF-2	MISSED APPROACH: Climb to 2500 direct HURTZ and hold.
<p>▼ For uncompensated Baro-VNAV systems, LNAV/VNAV</p> <p>▲ NA below -11°C or above 54°C.</p>		

D-ATIS <b>115.1 127.8</b>	POTOMAC APP CON (020°-100°) <b>119.7 290.475</b> (131°-180°) (101°-130°) <b>128.7 307.9</b> (181°-019°)	BALTIMORE TOWER <b>119.4 257.8</b>	GND CON <b>121.9</b>	CLNC DEL <b>118.05</b>
------------------------------	---	---------------------------------------	-------------------------	---------------------------



NE-3, 14 MAY 2026 to 11 JUN 2026

NE-3, 14 MAY 2026 to 11 JUN 2026



CATEGORY	A	B	C	D
LPV DA	343/18 200 (200-1/2)			
LNAV/VNAV DA	600/45 457 (500-7/8)			
LNAV MDA	600/24	457 (500-1/2)	600/45	457 (500-7/8)
CIRCLING	640-1 497 (500-1)	660-1 517 (600-1)	700-1 1/2 557 (600-1 1/2)	880-2 1/4 737 (800-2 1/4)

