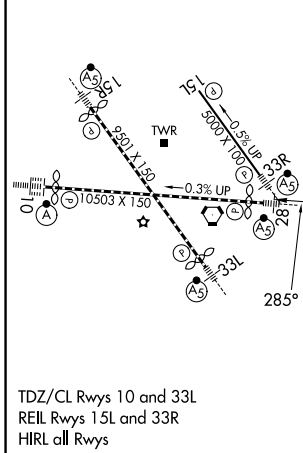
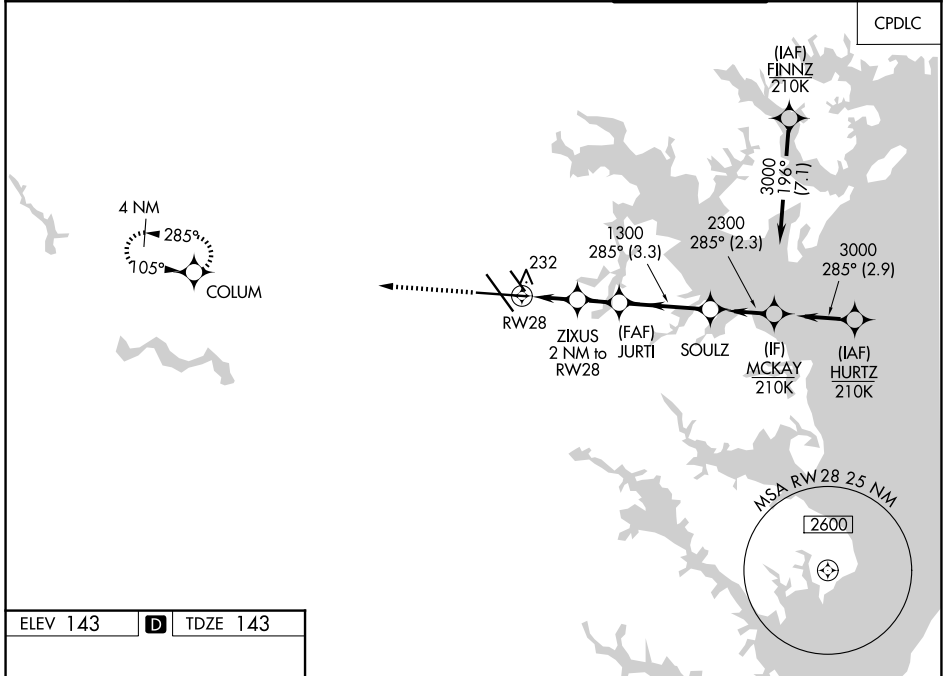


WAAS CH 48808 W28A	APP CRS 285°	Rwy Ldg TDZE Apt Elev	9803 143 143
--	------------------------	-----------------------------	---

RNAV (GPS) Y RWY 28

BALTIMORE/WASHINGTON INTL THURGOOD MARSHALL (BWI)

RNP APCH - GPS.		POTOMAC APP CON (020°-100°) 119.7 290.475 (131°-180°) (101°-130°) 128.7 307.9 (181°-019°)		BALTIMORE TOWER 119.4 257.8	GND CON 121.9	CLNC DEL 118.05
▼ For uncompensated Baro-VNAV systems, LNAV/VNAV NA below -11°C or above 54°C. For inop ALS, increase LNAV/VNAV all Cats visibility to RVR 4000 and LNAV Cats C and D visibility to RVR 5500. ▲ * RVR 1800 authorized with use of FD or AP or HUD to DA.		MALSR 		MISSED APPROACH: Climb to 2500 direct COLUM and hold.		



CATEGORY	A	B	C	D
	LPV DA *	343/24	200 (200-½)	
LNAV/VNAV DA	395/24	252 (300-½)		
LNAV MDA	500/24	357 (400-½)	500/30	357 (400-¾)
CIRCLING	660-1	517 (600-1)	700-1½ 557 (600-1½)	880-2¼ 737 (800-2¼)

RNAV (GPS) Y RWY 28

NE-3, 14 MAY 2026 to 11 JUN 2026

NE-3, 14 MAY 2026 to 11 JUN 2026