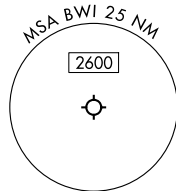


RNAV 1 - DME/DME/IRU or GPS.

RADAR required.

TOP ALTITUDE:

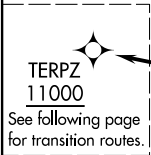
17000



POTOMAC DEP CON
128.7 307.9
D-ATIS
115.1 127.8
CLNC DEL
118.05
CPDLC
GND CON
121.9
BALTIMORE TOWER
119.4 257.8

TERPZ EIGHT DEPARTURE (RNAV) Departure Routes
(TERPZ8, TERPZ) 11 JUL 24

BALTIMORE, MARYLAND
BALTIMORE/WASHINGTON INTL THURGOOD MARSHALL (BWI)



TAKEOFF MINIMUMS

Rwy 15R: Standard with minimum climb of 780'/NM to 644.
Rwys 10, 15L, 28, 33L/R: Standard with minimum climb of 500'/NM to 644.

NOTE: Jet aircraft only.

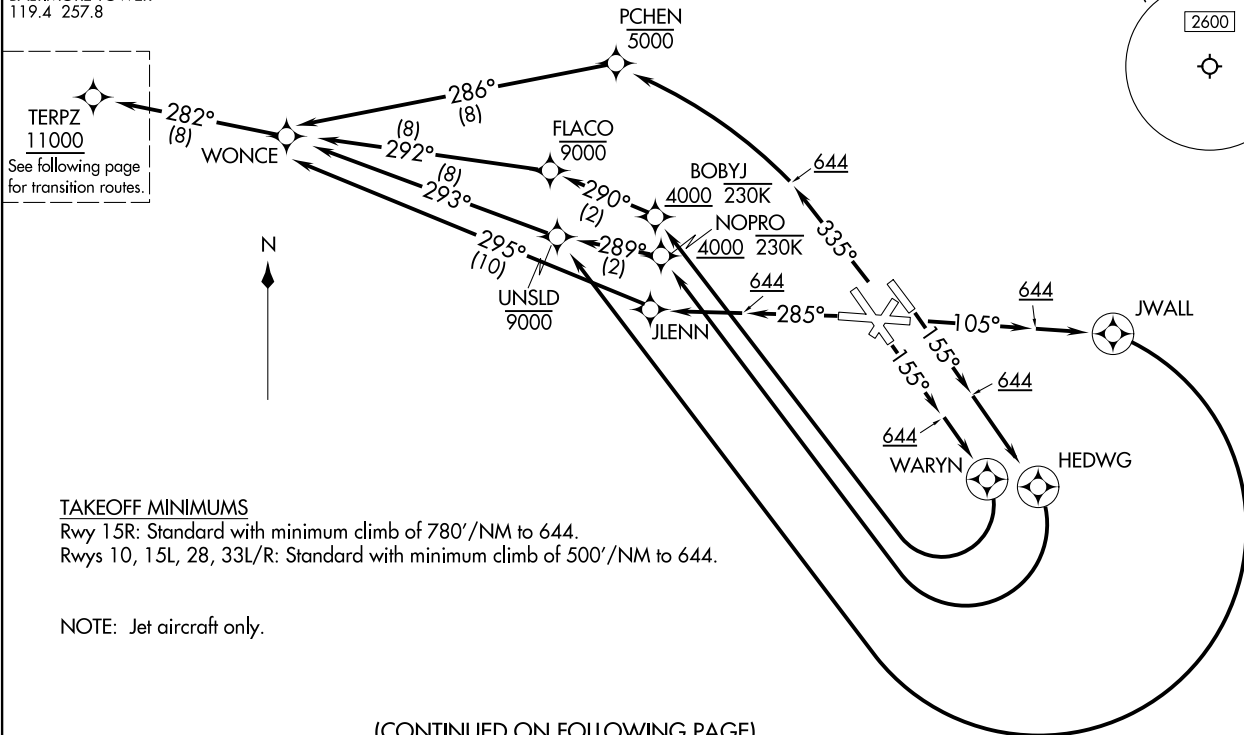
(CONTINUED ON FOLLOWING PAGE)

NOTE: Chart not to scale.

(TERPZ8, TERPZ) 24193
TERPZ EIGHT DEPARTURE (RNAV)

BALTIMORE/WASHINGTON INTL THURGOOD MARSHALL (BWI)
Departure Routes

BALTIMORE, MARYLAND
AL-804

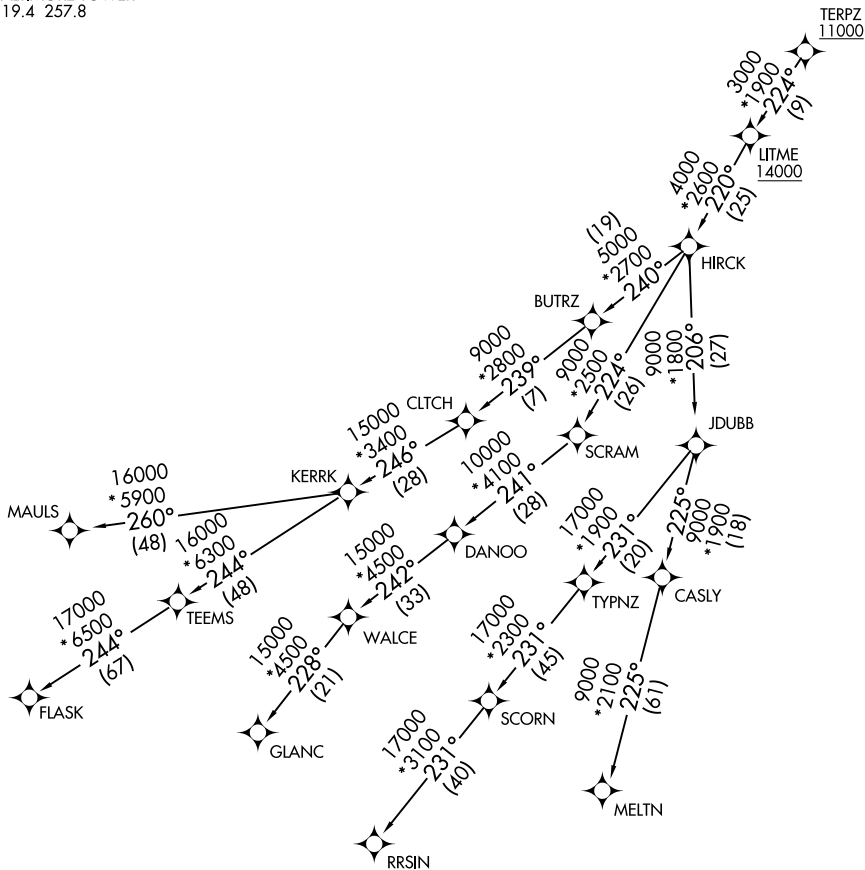


POTOMAC DEP CON
128.7 307.9
D-ATIS
115.1 127.8
CLNC DEL
118.05
CPDLC
GND CON
121.9
BALTIMORE TOWER
119.4 257.8

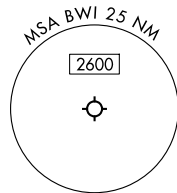
RNAV 1 - DME/DME/IRU or GPS.

RADAR required.

**TOP ALTITUDE:
17000**



NOTE: Jet aircraft only.



NOTE: Chart not to scale.

(CONTINUED ON FOLLOWING PAGE)

NE-3, 14 MAY 2026 to 11 JUN 2026

NE-3, 14 MAY 2026 to 11 JUN 2026



DEPARTURE ROUTE DESCRIPTION

TAKEOFF RUNWAY 10: Climb on heading 105° to 644, then direct JWALL, then right turn direct UNSLD at or below 9000, then on track 293° to WONCE, thence

TAKEOFF RUNWAY 15L: Climb on heading 155° to 644, then direct HEDWG, then right turn direct NOPRO at or above 4000 at or below 230K, then on track 289° to cross UNSLD at or below 9000, then on track 293° to WONCE, thence

TAKEOFF RUNWAY 15R: Climb on heading 155° to 644, then direct WARYN, then right turn direct BOBYJ at or above 4000 at or below 230K, then on track 290° to cross FLACO at or below 9000, then on track 292° to WONCE, thence

TAKEOFF RUNWAY 28: Climb on heading 285° to 644, then direct JLENN, then on track 295° to WONCE, thence

TAKEOFF RUNWAYS 33L/R: Climb on heading 335° to 644, then left turn direct PCHEN at or below 5000, then on track 286° to WONCE, thence

. . . . then on track 282° to cross TERPZ at or above 11000, then on (transition).
Maintain 17000, expect filed altitude within 10 minutes after departure.

All aircraft ATC climb gradient: if unable to accept climb rate advise ATC prior to taxi. Rwy 15R: 780'/NM to 644 MSL.

CLTCH TRANSITION (TERPZ8.CLTCH)

FLASK TRANSITION (TERPZ8.FLASK)

GLANC TRANSITION (TERPZ8.GLANC)

MAULS TRANSITION (TERPZ8.MAULS)

MELTN TRANSITION (TERPZ8.MELTN)

RRSIN TRANSITION (TERPZ8.RRSIN)

NE-3, 14 MAY 2026 to 11 JUN 2026

NE-3, 14 MAY 2026 to 11 JUN 2026