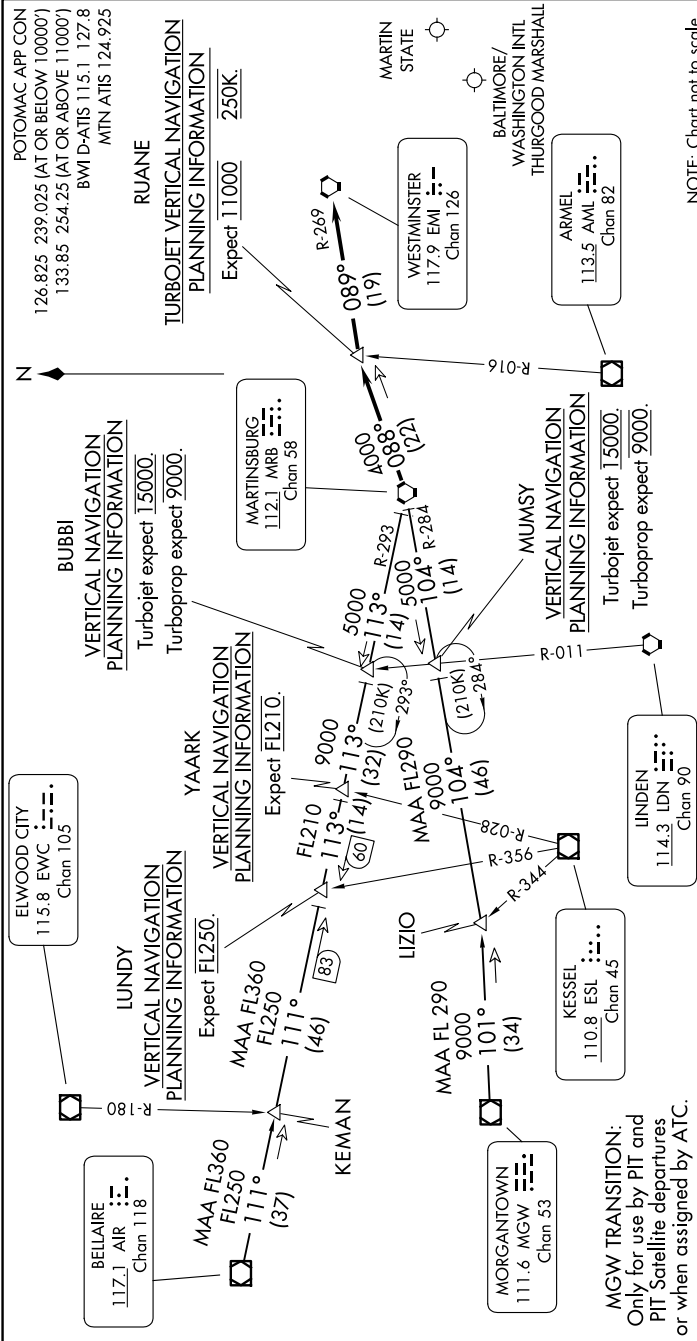


# WESTMINSTER SEVEN ARRIVAL

BALTIMORE, MARYLAND

NE-3, 14 MAY 2026 to 11 JUN 2026



NOTE: Chart not to scale.

## ARRIVAL ROUTE DESCRIPTION

**BELLAIRE TRANSITION (AIR.EM17):** From over AIR VOR/DME on AIR R-111 to LUNDY, then on MRB VORTAC R-293 to MRB VORTAC. Thence . . .

**KEMAN TRANSITION (KEMAN.EM17):** From over KEMAN on AIR R-111 to LUNDY, then on MRB VORTAC R-293 to MRB VORTAC. Thence . . .

**MORGANTOWN TRANSITION (MGW.EM17):** From over MGW VOR/DME on MGW R-101 to LIZIO, then on MRB VORTAC R-284 to MRB VORTAC. Thence . . .

. . . from MRB on MRB R-088 to RUANE, then on EMI VORTAC R-269 to EMI. Expect vectors to final approach course after EMI.

NE-3, 14 MAY 2026 to 11 JUN 2026

# WESTMINSTER SEVEN ARRIVAL

BALTIMORE, MARYLAND