

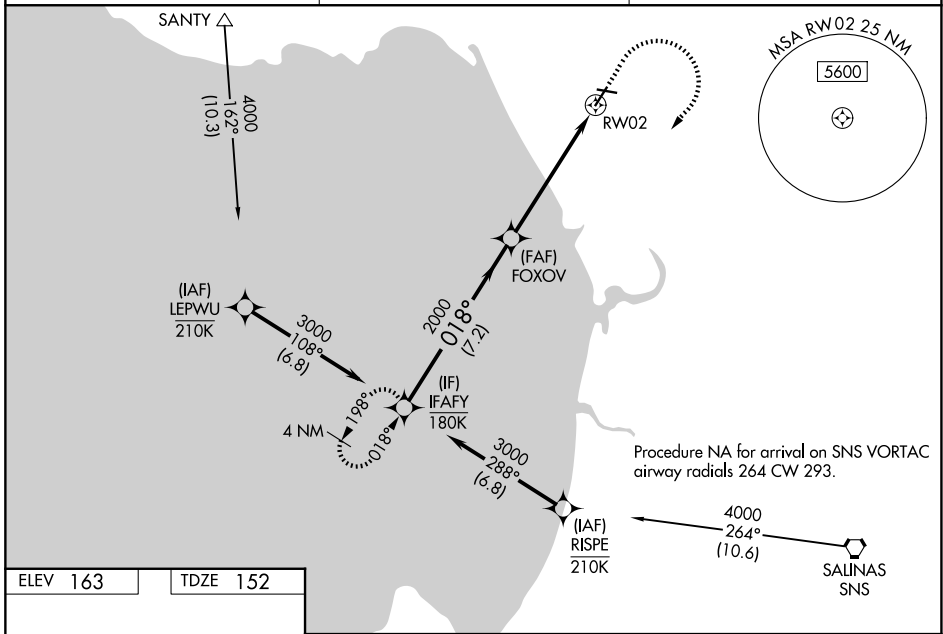
WAAS CH <b>50144</b> <b>W02A</b>	APP CRS <b>018°</b>	Rwy Ldg TDZE <b>152</b> Apt Elev <b>163</b>	<b>4502</b>
--	------------------------	---	-------------

# RNAV (GPS) RWY 2

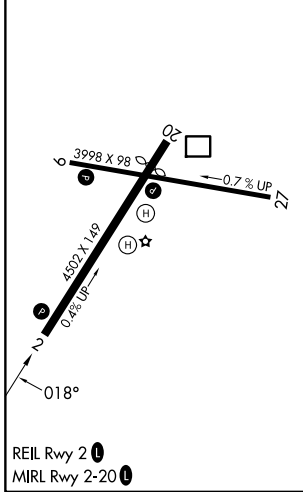
WATSONVILLE MUNI (WVI)

RNP APCH - GPS.	MISSED APPROACH: (Do not exceed 200K until IFAFY) Climb to 740 then climbing right turn to 3000 direct IFAFY and hold.
-----------------	--

ASOS <b>132.275</b>	NORCAL APP CON <b>127.15 307.125</b>	UNICOM <b>122.8 (CTAF) 0</b>
------------------------	---	---------------------------------



ELEV 163	TDZE 152
----------	----------



VGSI and RNAV glidepath not coincident (VGSI Angle 3.00/TCH 43).		740	3000	IFAFY
IFAFY	FOXOV	↑	↷	✦
3000	2000	1.6 NM to RWY 2		
GP 3.00°	2000			
TCH 56				
	7.2 NM	4.1 NM	1.6 NM	
CATEGORY	A	B	C	D
LPV DA	402-3/4 250 (300-3/4)			
LNAV/VNAV DA	680-1 1/2 528 (600-1 1/2)			
LNAV MDA	680-1 528 (600-1)	680-1 1/2 528 (600-1 1/2)		
CIRCLING	680-1 517 (600-1)	680-1 1/2 517 (600-1 1/2)	1180-3 1017 (1100-3)	

SW-2, 14 MAY 2026 to 11 JUN 2026

SW-2, 14 MAY 2026 to 11 JUN 2026