

VORTAC GGG 112.9 Chan 76	APP CRS 306°	Rwy Ldg TDZE Apt Elev	9200 354 366
--	------------------------	-----------------------------	---

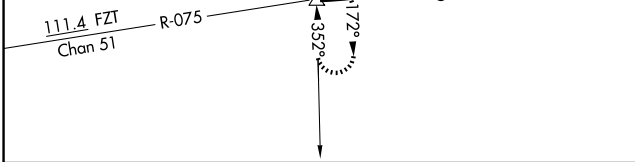
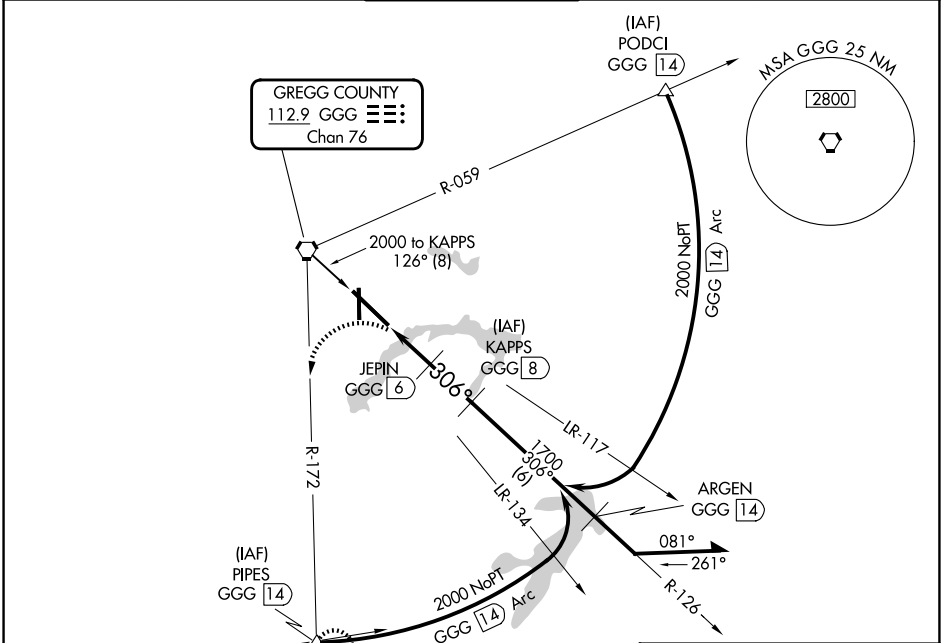
VOR/DME or TACAN RWY 31

EAST TEXAS RGNL (GGG)

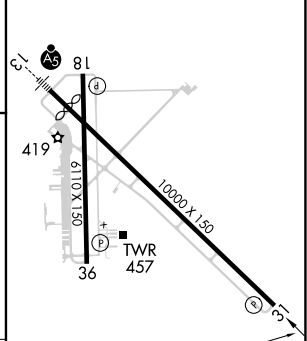
⚠ When local altimeter setting not received, use Gilmer altimeter setting and increase all MDA 60 feet and increase S-31 Cats C/D/E and Circling Cats C/D/E visibility ½ SM. VDP NA when using Gilmer altimeter setting.

⚠ MISSED APPROACH: Climb to 800, then climbing left turn to 2500 via GGG R-172 to PIPES INT and hold.

ATIS 119.65	LONGVIEW APP CON* 124.675 257.975	EASTEX TOWER* 119.2 (CTAF) 377.05	GND CON 121.6	UNICOM 122.95
-----------------------	---	---	-------------------------	-------------------------



ELEV 366	D	TDZE 354
----------	----------	----------



800	2500	PIPES △	KAPPS GGG (8)	Remain within 15 NM
GGG R-172			≤ 2.97° TCH 52	
*1120 when using Gilmer altimeter setting.		JEPIN GGG (6)	ARGEN GGG (14)	2000
	GGG (3.9)	GGG (5)	1060*	1700
	1.1	1	2	6

CATEGORY	A	B	C	D	E
S-31	780-1	426 (500-1)	780-1¼	426 (500-1¼)	
CIRCLING	860-1	494 (500-1)	980-1¾ 614 (700-1¾)	1080-2¼ 714 (800-2¼)	1080-2½ 714 (800-2½)

HIRL Rwy 13-31 **1**
MIRL Rwy 18-36

SC-2, 14 MAY 2026 to 11 JUN 2026

SC-2, 14 MAY 2026 to 11 JUN 2026