

WAAS CH <b>42625</b> <b>W17A</b>	APP CRS <b>166°</b>	Rwy Idg TDZE Apt Elev	<b>5840</b> <b>2364</b> <b>2380</b>
----------------------------------------	------------------------	-----------------------------	-------------------------------------------

# RNAV (GPS) RWY 17

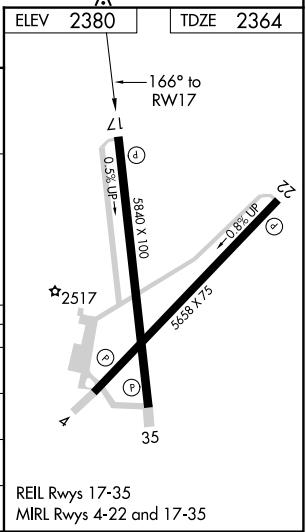
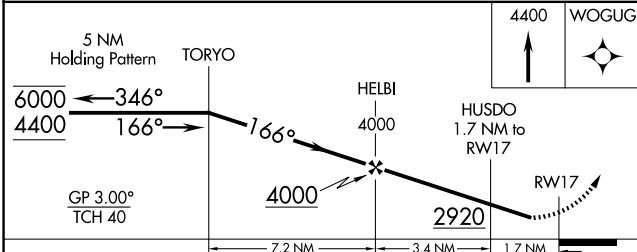
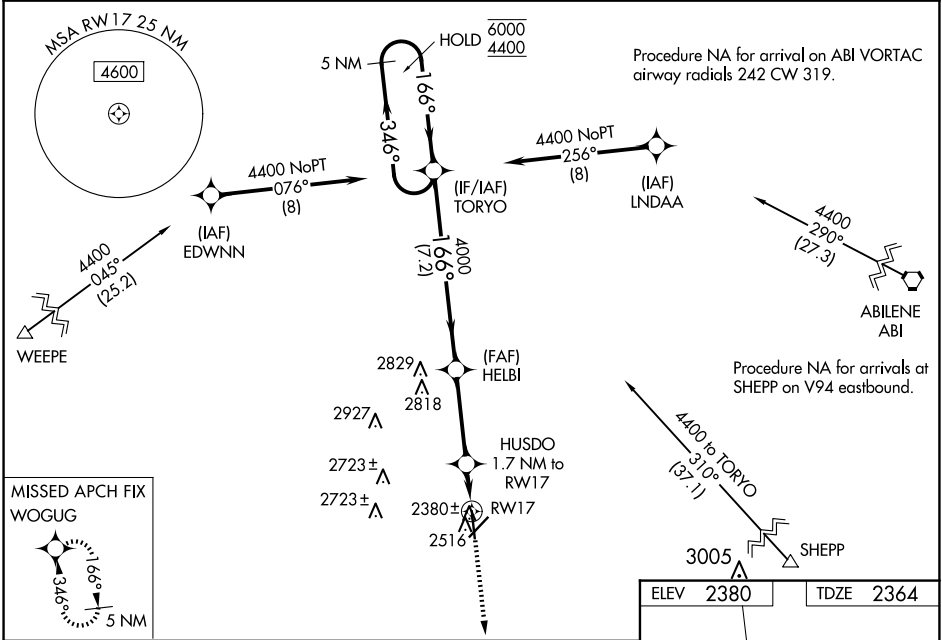
AVENGER FLD (SWW)

RNP APCH - GPS.

▼ Rwy 17 helicopter visibility reduction below 1 SM NA.  
 ▲ For uncompensated Baro-VNAV systems, LNAV/VNAV NA below -19°C or above 54°C. Straight-in Rwy 17 and Circling Rwy 17, 22 NA at night.

MISSED APPROACH: Climb to 4400 direct WOGUG and hold.

AWOS-3 <b>119.025</b>	ABILENE APP CON <b>127.2 282.3</b>	UNICOM <b>122.8</b> (CTAF)
--------------------------	---------------------------------------	-------------------------------



CATEGORY	A	B	C	D
LPV DA		2614-1	250 (300-1)	
LNAV/VNAV DA		2619-1	255 (300-1)	
LNAV MDA		2680-1	316 (300-1)	
<b>C</b> CIRCLING	2880-1	500 (500-1)	3080-2 700 (700-2)	3080-2 1/4 700 (700-2 1/4)

SC-2, 14 MAY 2026 to 11 JUN 2026

SC-2, 14 MAY 2026 to 11 JUN 2026