

| | | | |
|--|------------------------|-----------------------------|---|
| WAAS CH 78225 W35A | APP CRS 346° | Rwy Ldg TDZE Apt Elev | 5840 2369 2380 |
|--|------------------------|-----------------------------|---|

RNAV (GPS) RWY 35

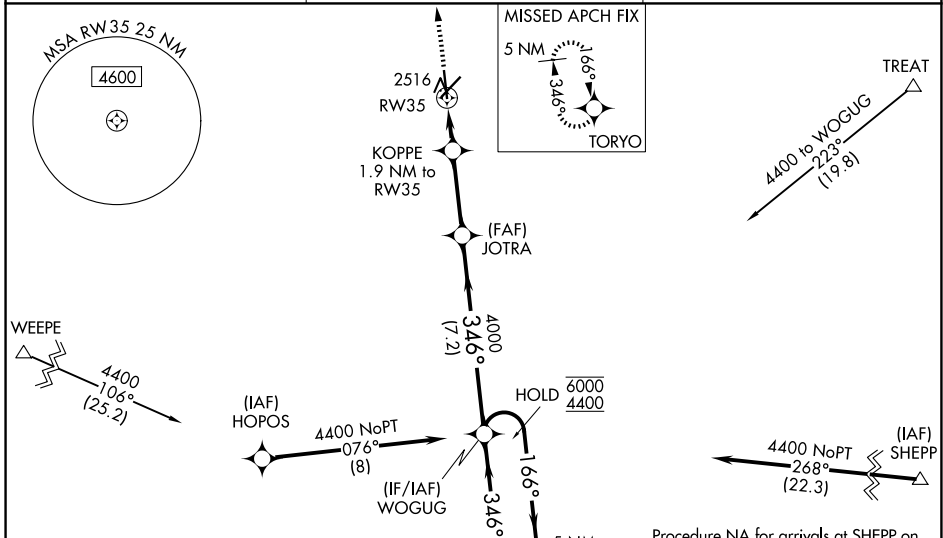
AVENGER FLD (SWW)

RNP APCH - GPS.

⚠ When VGSI inop, Circling Rwy 17 and 22 NA at night. When VGSI inop, Straight-In/Circling Rwy 35 procedure NA at night. Baro-VNAV NA when using SNK altimeter setting. For uncompensated Baro-VNAV systems, LNAV/VNAV NA below -19°C or above 54°C. Rwy 35 helicopter visibility reduction below 3/4 SM NA. When local altimeter setting not received, use SNK altimeter setting and increase LPV DA to 2691 feet, LNAV/VNAV DA to 2799 feet, and all MDAs 80 feet; increase LPV and LNAV/VNAV visibility all Cats 1/4 SM, LNAV visibility Cats C and D 1/2 SM, and Circling Cat C and D visibility 1/4 SM.

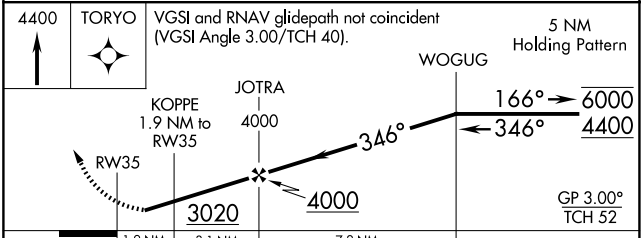
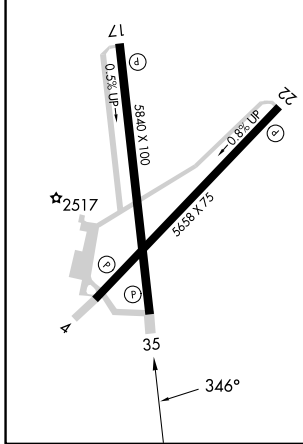
MISSED APPROACH:
Climb to 4400 direct TORYO and hold.

| | | |
|--------------------------|---------------------------------------|-------------------------------|
| AWOS-3 119.025 | ABILENE APP CON 127.2 282.3 | UNICOM 122.8 (CTAF) |
|--------------------------|---------------------------------------|-------------------------------|



| | |
|------------------|------------------|
| ELEV 2380 | TDZE 2369 |
|------------------|------------------|

REIL Rwy 17-35
MIRL Rwy 4-22 and 17-35



| CATEGORY | A | B | C | D |
|--------------|--------|-------------|-----------------------|-------------------------------|
| LPV DA | | 2619-3/4 | 250 (300-3/4) | |
| LNAV/VNAV DA | | 2727-1 | 358 (400-1) | |
| LNAV MDA | 2820-1 | 451 (500-1) | 2820-1 3/8 | 451 (500-1 3/8) |
| CIRCLING | 2880-1 | 500 (500-1) | 3080-2 700 (700-2) | 3080-2 1/4 700 (700-2 1/4) |

SC-2, 14 MAY 2026 to 11 JUN 2026

SC-2, 14 MAY 2026 to 11 JUN 2026