

WAAS CH 72925 W04A	APP CRS 035°	Rwy Idg TDZE Apt Elev	5658 2380 2380
--	------------------------	-----------------------------	---

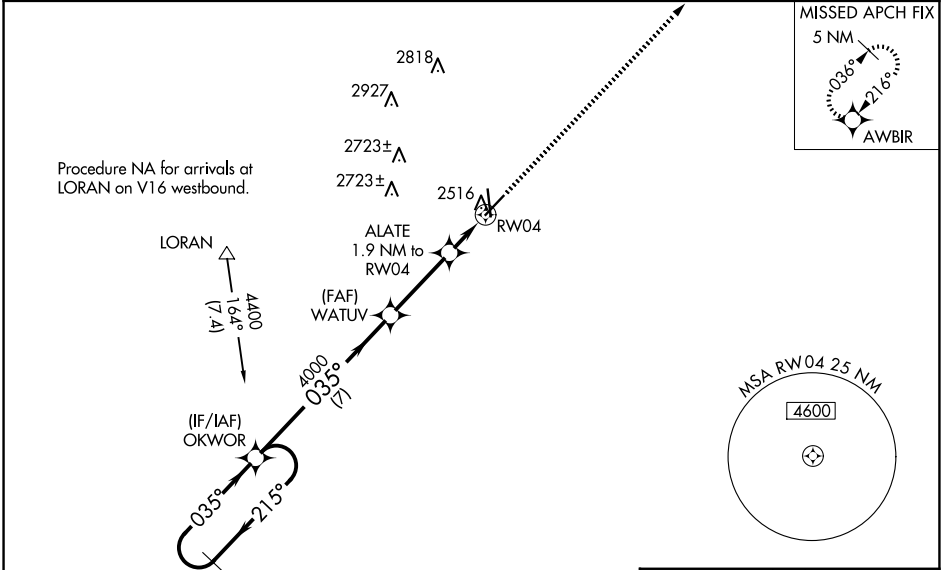
RNAV (GPS) RWY 4

AVENGER FLD (SWW)

⚠ Baro-VNAV NA when using Snyder altimeter setting. For uncompensated Baro-VNAV systems, LNAV/VNAV NA below -19°C (-2°F) or above 29°C (84°F). DME/DME RNP-0.3 NA. Visibility reduction by helicopters NA. When local altimeter setting not received, use Snyder altimeter setting and increase LPV DA to 2702 feet and LNAV/VNAV DA to 2799 feet, and all MDAs 80 feet; increase LPV visibility all Cats 1/8 SM, LNAV/VNAV visibility all Cats 1/4 SM, LNAV visibility Cats C/D 1/8 SM, and Circling Cats C/D visibility 1/4 SM. When VGSI inop, Straight-in/Circling Rwy 4 procedure NA at night. When VGSI inop, Circling Rwy 17 and 22 NA at night.

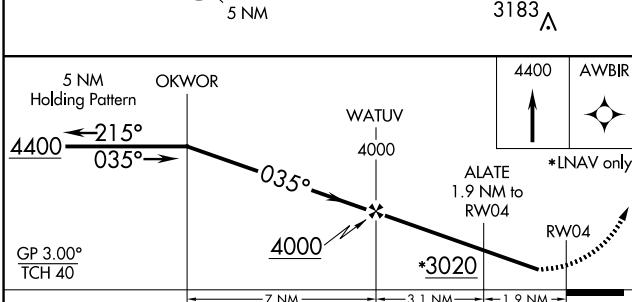
MISSED APPROACH:
Climb to 4400 direct AWBIR and hold.

AWOS-3 119.025	ABILENE APP CON 127.2 282.3	UNICOM 122.8 (CTAF)
--------------------------	---------------------------------------	-------------------------------



SC-2, 14 MAY 2026 to 11 JUN 2026

SC-2, 14 MAY 2026 to 11 JUN 2026



ELEV 2380	TDZE 2380
-----------	-----------

CATEGORY	A	B	C	D
LPV DA	2630-1		250 (300-1)	
LNAV/VNAV DA	2727-1 1/8		347 (400-1 1/8)	
LNAV MDA	2820-1 440 (500-1)		2820-1 1/4 440 (500-1 1/4)	
CIRCLING	2880-1 500 (500-1)		3080-2 700 (700-2) 3080-2 1/4 700 (700-2 1/4)	

