

# RNAV (GPS) RWY 10

CHIPPEWA COUNTY INTL (CIU)

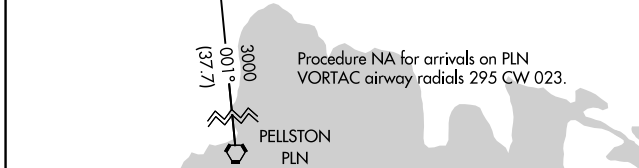
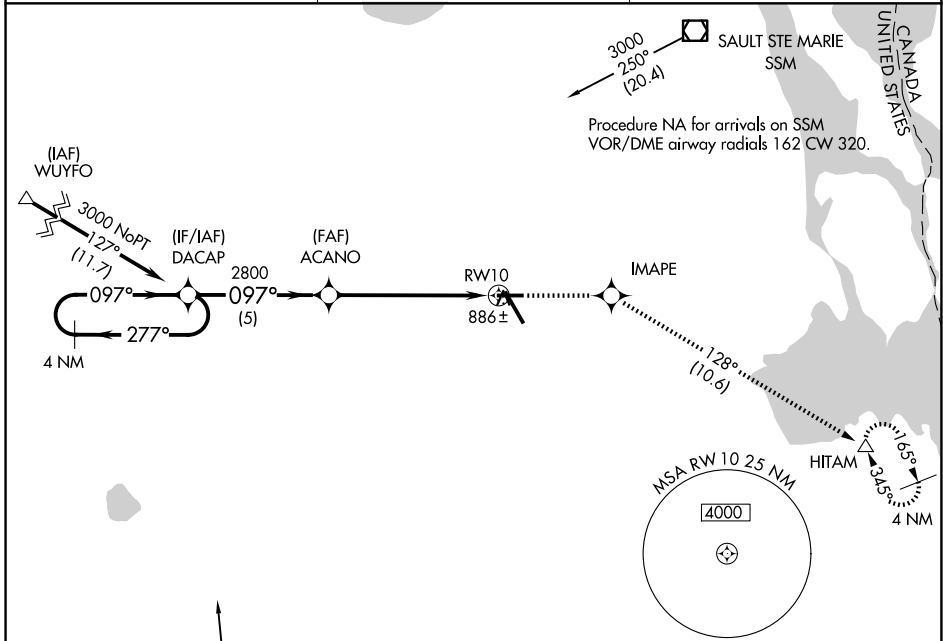
APP CRS	Rwy Ldg	<b>5000</b>
<b>097°</b>	TDZE	<b>799</b>
	Apt Elev	<b>799</b>

RNP APCH.

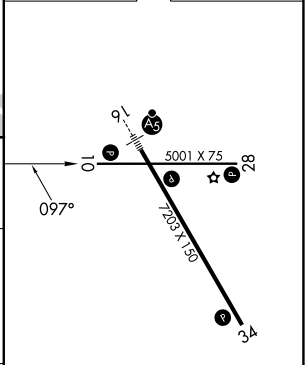
**⚠** VDP NA with Sault Ste Marie altimeter setting. When local altimeter setting not received, use Sault Ste Marie Muni/Sanderson Fld altimeter setting; increase all MDA 60 feet, increase LNAV visibility Cat C/D and Circling Cat C ¼ SM.

MISSED APPROACH: Climb to 2900 direct IMAPE and track 128° to HITAM and hold.

AWOS-3PT	TORONTO CENTER	UNICOM
<b>127.575</b>	<b>132.65 344.5</b>	<b>123.0 (CTAF) 0</b>



ELEV 799	<b>D</b> TDZE 799
----------	-------------------



4 NM Holding Pattern	DACAP	2900	IMAPE	HITAM
		↑	✧	tr 128°
3000 ← 277°	→ 097°	ACANO	1.5 NM to RW10	
		2800	↓	
			3.05°	
			TCH 40	
	5 NM	4.5 NM	1.5	

CATEGORY	A	B	C	D
LNAV MDA	1320-1	521 (600-1)	1320-1½	521 (600-1½)
CIRCLING	1320-1	521 (600-1)	1320-1½	1360 - 2 561 (600-2)

REIL Rwy 10, 28 and 34 **L**

MIRL Rwy 10-28 **L**

HIRL Rwy 16-34 **L**

EC-1, 14 MAY 2026 to 11 JUN 2026

EC-1, 14 MAY 2026 to 11 JUN 2026