

# RNAV (GPS) RWY 10

LAKE CITY GATEWAY (LCQ)

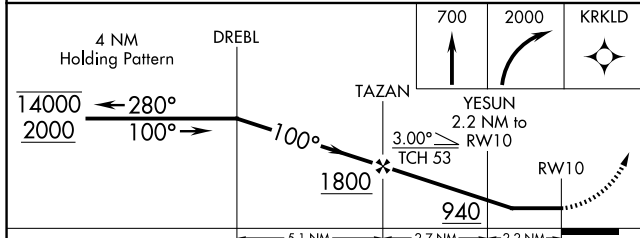
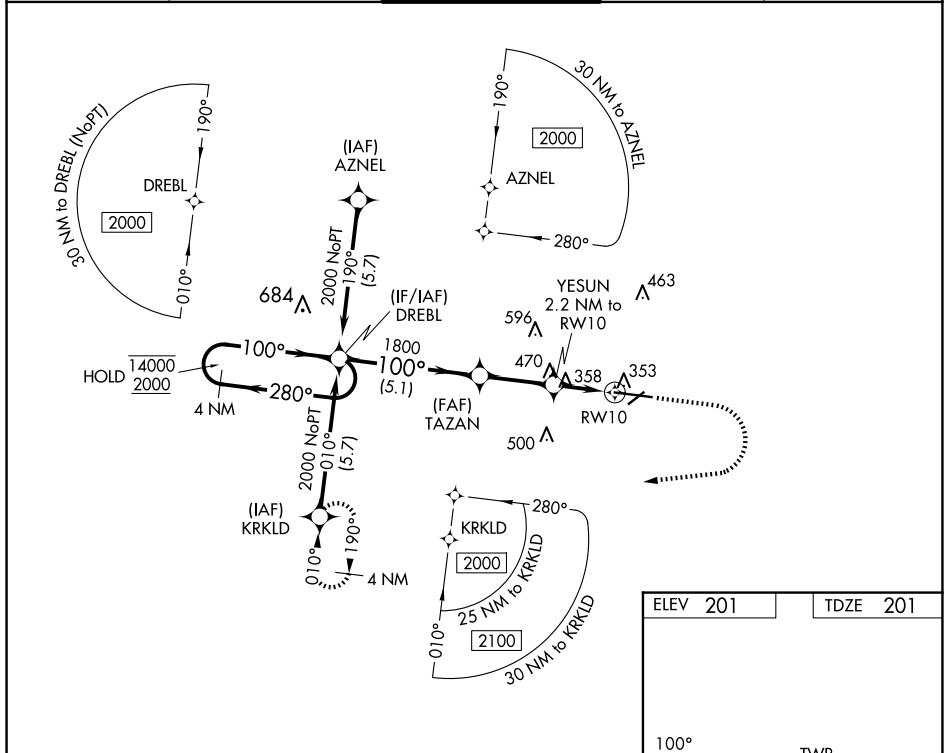
APP CRS	Rwy Ldg	<b>8003</b>
<b>100°</b>	TDZE	<b>201</b>
	Apt Elev	<b>201</b>

RNP APCH - GPS.

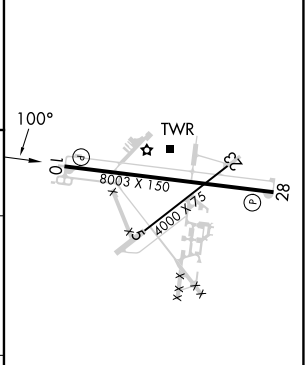
**⚠** Rwy 10 helicopter visibility reduction below 1 SM NA. When local altimeter setting not received, use GNV altimeter setting and increase all MDAs 100 feet, increase LNAV Cat C/D visibility  $\frac{3}{8}$  SM and Circling Cat C visibility  $\frac{1}{2}$  SM and Cat D  $\frac{1}{4}$  SM. Straight-in Rwy 10 NA at night, Circling Rwy 5, 10, 23 NA at night.

**MISSED APPROACH:** Climb to 700 then climbing right turn to 2000 direct KRKLD and hold.

AWOS-3 <b>120.675</b>	JACKSONVILLE CENTER <b>125.375 254.325</b>	LAKE CITY TOWER ★ <b>119.2 (CTAF) 0 314.6</b>	GND CON <b>121.9</b>	UNICOM <b>122.95</b>
--------------------------	---	--	-------------------------	-------------------------



ELEV 201	TDZE 201
----------	----------



CATEGORY	A	B	C	D
LNAV MDA	700-1 499 (500-1)		700- $\frac{1}{8}$ 499 (500- $\frac{1}{8}$ )	
CIRCLING	760-1 559 (600-1)		780- $\frac{1}{2}$ 579 (600- $\frac{1}{2}$ )	960- $\frac{2}{2}$ 759 (800- $\frac{2}{2}$ )

REIL Rwy 10 and 28 **0**  
MIRL Rwy 5-23 and 10-28 **0**

SE-3, 14 MAY 2026 to 11 JUN 2026

SE-3, 14 MAY 2026 to 11 JUN 2026