

26134

AIRPORT DIAGRAM

AL-827 (FAA)

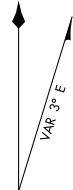
VALLEY INTL (H.R.L.)
HARLINGEN, TEXAS

ATIS
124.85
HARLINGEN TOWER ★
119.3 (CTAF) 317.6
GND CON
121.7

97°39'W

FIELD
ELEV
36

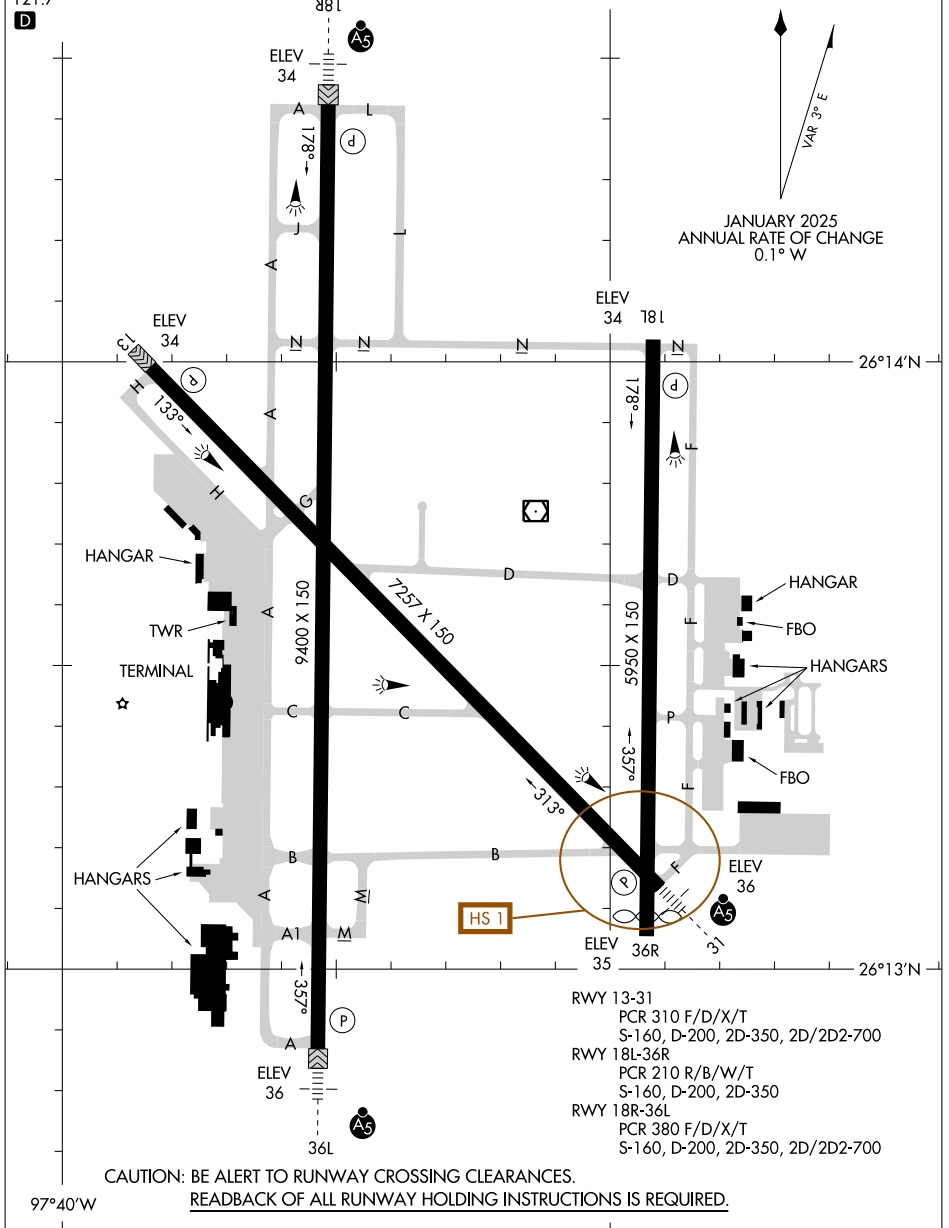
HIRL Rwy 18R-36L and 13-31
MIRL Rwy 18L-36R
REIL Rwy 18L and 13



JANUARY 2025
ANNUAL RATE OF CHANGE
0.1° W

SC-3, 14 MAY 2026 to 11 JUN 2026

SC-3, 14 MAY 2026 to 11 JUN 2026



RWY 13-31
PCR 310 F/D/X/T
S-160, D-200, 2D-350, 2D/2D2-700
RWY 18L-36R
PCR 210 R/B/W/T
S-160, D-200, 2D-350
RWY 18R-36L
PCR 380 F/D/X/T
S-160, D-200, 2D-350, 2D/2D2-700

CAUTION: BE ALERT TO RUNWAY CROSSING CLEARANCES.
READBACK OF ALL RUNWAY HOLDING INSTRUCTIONS IS REQUIRED.

97°40'W

AIRPORT DIAGRAM

26134

HARLINGEN, TEXAS
VALLEY INTL (H.R.L.)