

WAAS CH <b>72830</b> <b>W36A</b>	APP CRS <b>358°</b>	Rwy Ldg TDZE Apt Elev	<b>5759</b> <b>36</b> <b>36</b>
--	------------------------	-----------------------------	---------------------------------------

# RNAV (GPS) RWY 36R

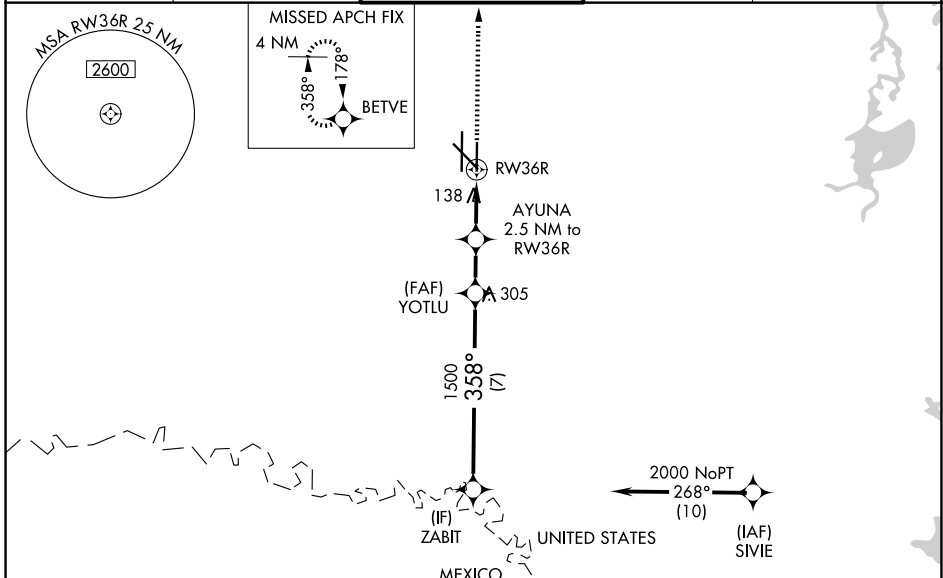
VALLEY INTL (HRL)

RNP APCH - GPS.

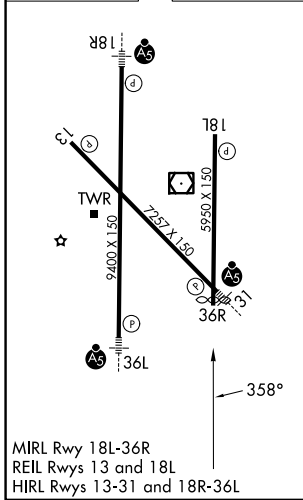
**⚠** For uncompensated Baro-VNAV systems, LNAV/VNAV NA below -1°C or above 54°C. Baro-VNAV and VDP NA when using Port Isabel altimeter setting. When local altimeter setting not received, use Port Isabel altimeter setting: increase LPV DA to 278 feet; increase LNAV/VNAV DA to 328 feet and all visibilities 1/2 SM, increase all MDAs 60 feet and LNAV visibility Cat C and D 1/2 SM, and Circling visibility Cats C and D 1/4 SM.

MISSED APPROACH: Climb to 2000 direct BETVE and hold.

ATIS <b>124.85</b>	VALLEY APP CON <b>120.7 279.5</b>	HARLINGEN TOWER ★ <b>119.3 (CTAF) L 317.6</b>	GND CON <b>121.7</b>	UNICOM <b>122.95</b>
-----------------------	--------------------------------------	--	-------------------------	-------------------------



ELEV 36	<b>D</b>	TDZE 36
---------	----------	---------



2000	BETVE	AYUNA 2.5 NM to RW36R	YOTLU 1500	ZABIT 2000
		1 NM to RW36R	880	1500
			358°	GP 3.00° TCH 35
CATEGORY	A	B	C	D
LPV DA		236-3/4	200 (200-3/4)	
LNAV/VNAV DA		286-3/4	250 (300-3/4)	
LNAV MDA		400-1	364 (400-1)	
CIRCLING	460-1 424 (500-1)	560-1 524 (600-1)	600-1 1/2 564 (600-1 1/2)	680-2 644 (700-2)

SC-3, 14 MAY 2026 to 11 JUN 2026

SC-3, 14 MAY 2026 to 11 JUN 2026