

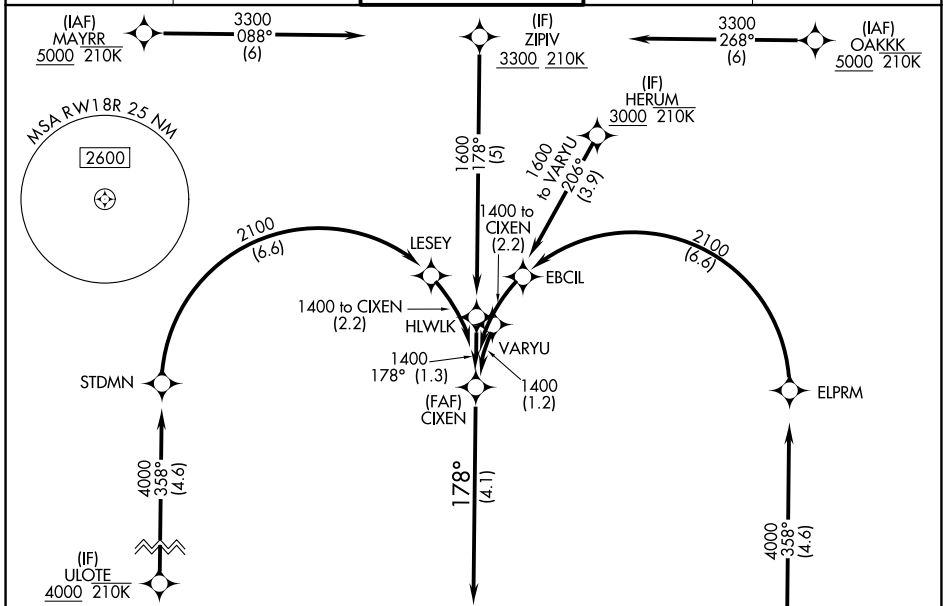
APP CRS <b>178°</b>	Rwy Ldg TDZE Apt Elev	<b>9400</b> <b>35</b> <b>36</b>
------------------------	-----------------------------	---------------------------------------

# RNAV (RNP) Z RWY 18R

VALLEY INTL (H.R.L.)

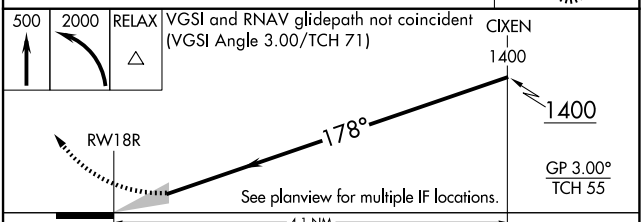
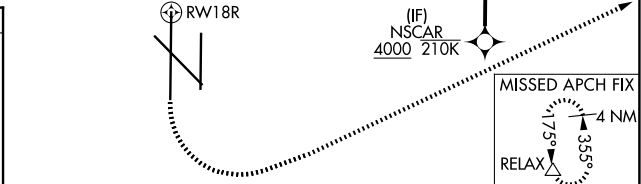
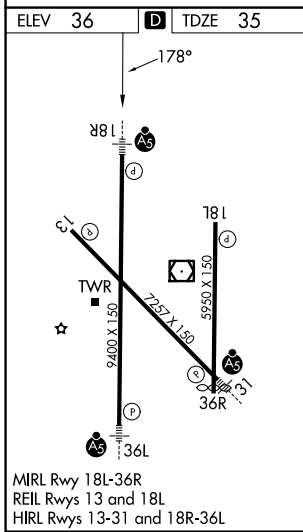
RNP AR APCH - GPS.	MALSR 	MISSED APPROACH: Climb to 500 then climbing left turn to 2000 direct RELAX and hold.
<p>▼ For uncompensated Baro-VNAV systems, procedure NA below -1°C or above 54°C. When local altimeter setting not received, procedure NA. For inop ALS, increase RNP 0.11 all Cats visibility to RVR 4000 and RNP 0.30 all Cats visibility to RVR 4500.</p>		

ATIS <b>124.85</b>	VALLEY APP CON <b>120.7 279.5</b>	HARLINGEN TOWER* <b>119.3 (CTAF) 0 317.6</b>	GND CON <b>121.7</b>	UNICOM <b>122.95</b>
-----------------------	--------------------------------------	---	-------------------------	-------------------------



SC-3, 14 MAY 2026 to 11 JUN 2026

SC-3, 14 MAY 2026 to 11 JUN 2026



CATEGORY	A	B	C	D
RNP 0.11 DA		285/24	250 (300-½)	
RNP 0.30 DA		345/24	310 (400-½)	

**AUTHORIZATION REQUIRED**