

RNAV (RNP) Z RWY 36L

VALLEY INTL (H.R.L.)

APP CRS	Rwy Ldg	9400
358°	TDZE	36
	Apt Elev	36

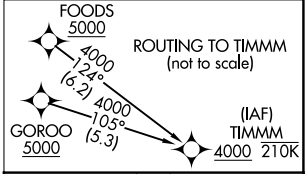
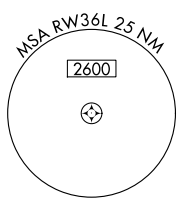
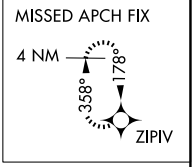
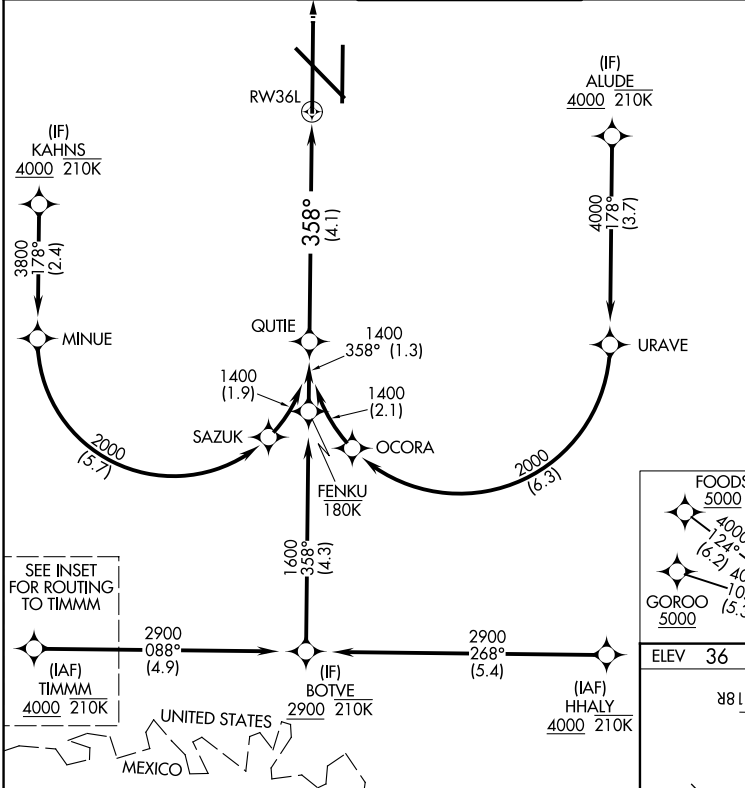
RNP AR APCH - GPS.

For uncompensated Baro-VNAV systems, procedure NA below -1°C or above 54°C. When local altimeter setting not received, procedure NA. For inop ALS, increase RNP 0.11 DA all Cats visibility to 7/8 SM.

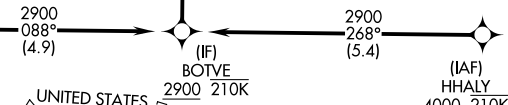


MISSED APPROACH: Climb to 2000 direct ZIPIV and hold.

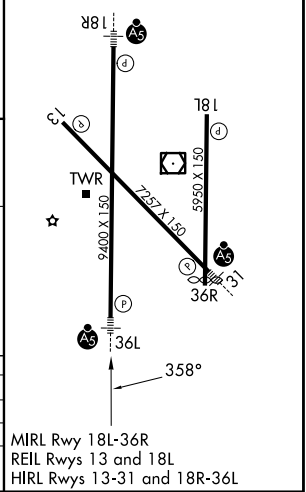
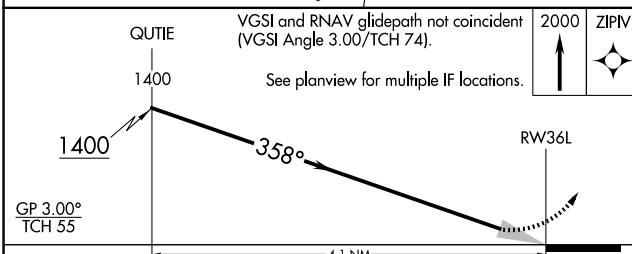
ATIS 124.85	VALLEY APP CON 120.7 279.5	HARLINGEN TOWER★ 119.3(CTAF) 0 317.6	GND CON 121.7	UNICOM 122.95
-----------------------	--------------------------------------	--	-------------------------	-------------------------



SEE INSET FOR ROUTING TO TIMMM



ELEV 36	TDZE 36
---------	---------



CATEGORY	A	B	C	D
RNP 0.11 DA		334-1/2	298 (300-1/2)	
RNP 0.30 DA		484-7/8	448 (500-7/8)	

AUTHORIZATION REQUIRED

MIRL Rwy 18L-36R
REIL Rwys 13 and 18L
HIRL Rwys 13-31 and 18R-36L

SC-3, 14 MAY 2026 to 11 JUN 2026

SC-3, 14 MAY 2026 to 11 JUN 2026