


WAAS CH 50131 W18A	APP CRS 178°	Rwy Ldg 9400 TDZE 35 Apt Elev 36
--	------------------------	---

RNAV (GPS) Y RWY 18R

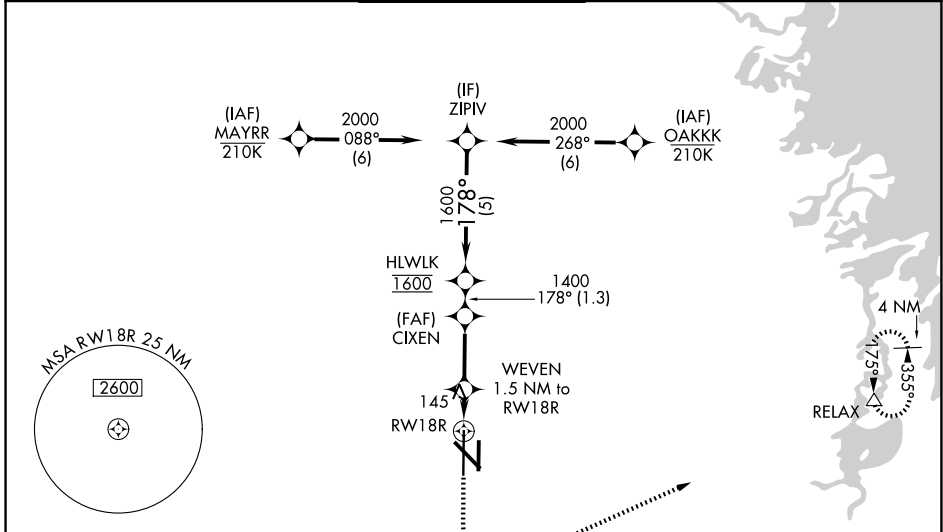
VALLEY INTL (H.R.L.)

RNP APCH - GPS.

⚠ For uncompensated Baro-VNAV systems, LNAV/VNAV NA below -1°C or above 54°C.
⚠ For inop ALS, increase LNAV/VNAV all Cats visibility to RVR 4000, LNAV Cats C and D visibility to RVR 5500. When local altimeter setting not received, use Port Isabel altimeter setting and increase LPV DA to 277 feet; increase LNAV/VNAV DA to 327 feet; increase all MDAs 60 feet and LNAV visibility Cat C/D to RVR 4000 and Circling visibility Cat C/D ¼ SM. For inop ALS when using Port Isabel altimeter setting, increase LNAV/VNAV all Cats visibility to RVR 4500. Baro-VNAV and VDP NA when using Port Isabel altimeter setting.
 * RVR 1800 authorized with use of FD or AP or HUD to DA, (NA when using Port Isabel altimeter setting).

MALSR  MISSED APPROACH: Climb to 500 then climbing left turn to 2000 direct RELAX and hold

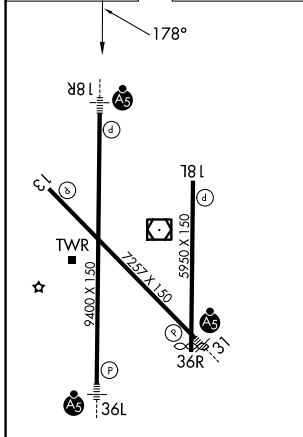
ATIS 124.85	VALLEY APP CON 120.7 279.5	HARLINGEN TOWER★ 119.3 (CTAF) 0 317.6	GND CON 121.7	UNICOM 122.95
-----------------------	--------------------------------------	---	-------------------------	-------------------------



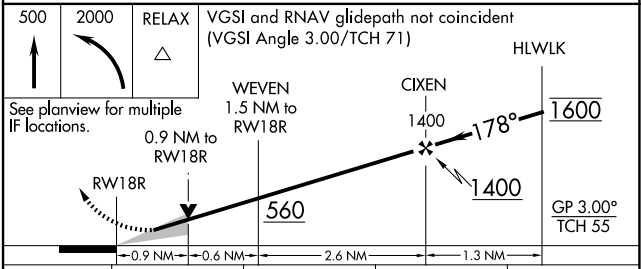
SC-3, 14 MAY 2026 to 11 JUN 2026

SC-3, 14 MAY 2026 to 11 JUN 2026

ELEV 36	D	TDZE 35
----------------	----------	----------------



MIRL Rwy 18L-36R
 REIL Rwy 13 and 18L
 HIRL Rwy 13-31 and 18R-36L



CATEGORY	A	B	C	D
LPV DA *		235/24	200 (200-½)	
LNAV/VNAV DA		285/24	250 (300-½)	
LNAV MDA	400/24	365 (400-½)	400/35	365 (400-¾)
CIRCLING	460-1 424 (500-1)	560-1 524 (600-1)	600-1½ 564 (600-½)	680-2 644 (700-2)