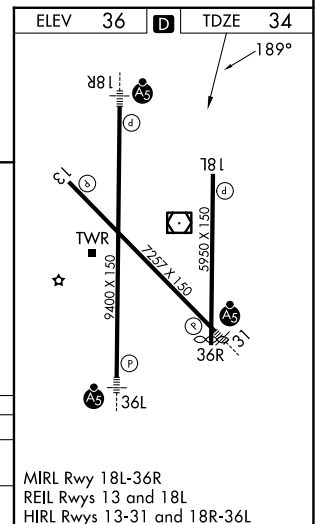
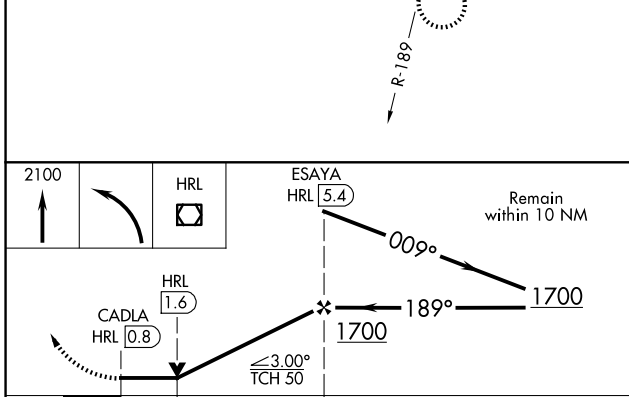
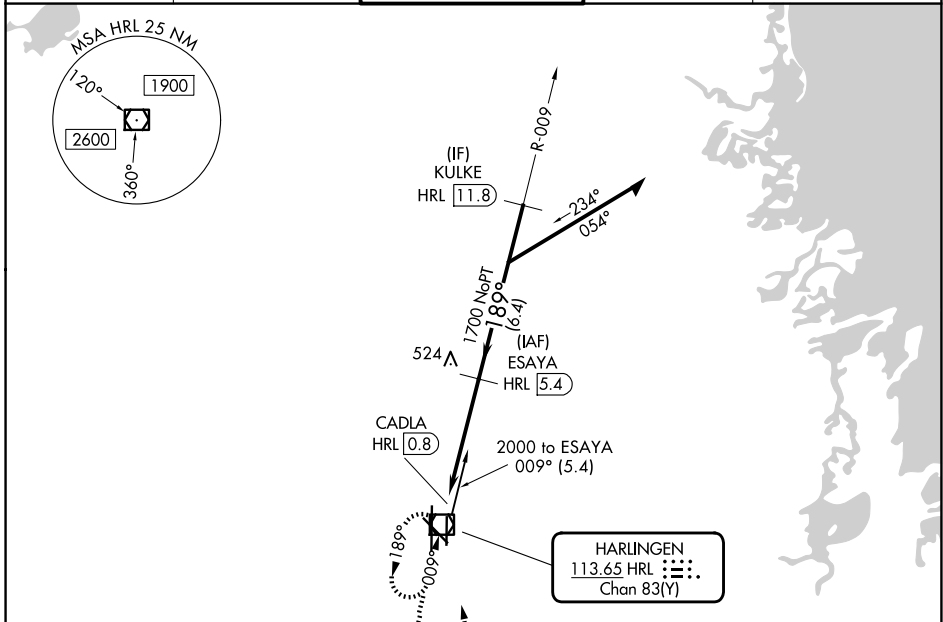


VOR/DME HRL	APP CRS	Rwy Ldg
113.65	189°	5949
Chan 83 (Y)		TDZE 34
		Apt Elev 36

VOR RWY 18L

VALLEY INTL (HRL)

DME required. RADAR required for procedure entry at KULKE.		MISSED APPROACH: Climb to 2100 then left turn direct HRL VOR/DME and hold.	
ATIS	VALLEY APP CON	HARLINGEN TOWER ★	GND CON
124.85	120.7 279.5	119.3 (CTAF) 0 317.6	121.7
			UNICOM
			122.95



CATEGORY	A	B	C	D
S-18L	480-1	446 (500-1)	480-1 $\frac{3}{8}$	446 (500-1 $\frac{3}{8}$)
CIRCLING	480-1 444 (500-1)	560-1 524 (600-1)	600-1 $\frac{1}{2}$ 564 (600-1 $\frac{1}{2}$)	680-2 644 (700-2)

SC-3, 14 MAY 2026 to 11 JUN 2026

SC-3, 14 MAY 2026 to 11 JUN 2026