

VOR/DME HRL <b>113.65</b> Chan <b>83 (Y)</b>	APP CRS <b>010°</b>	Rwy Ldg TDZE Apt Elev	<b>9400</b> <b>36</b> <b>36</b>
--	------------------------	-----------------------------	---------------------------------------

# VOR RWY 36L

VALLEY INTL (H.R.L.)

DME required.

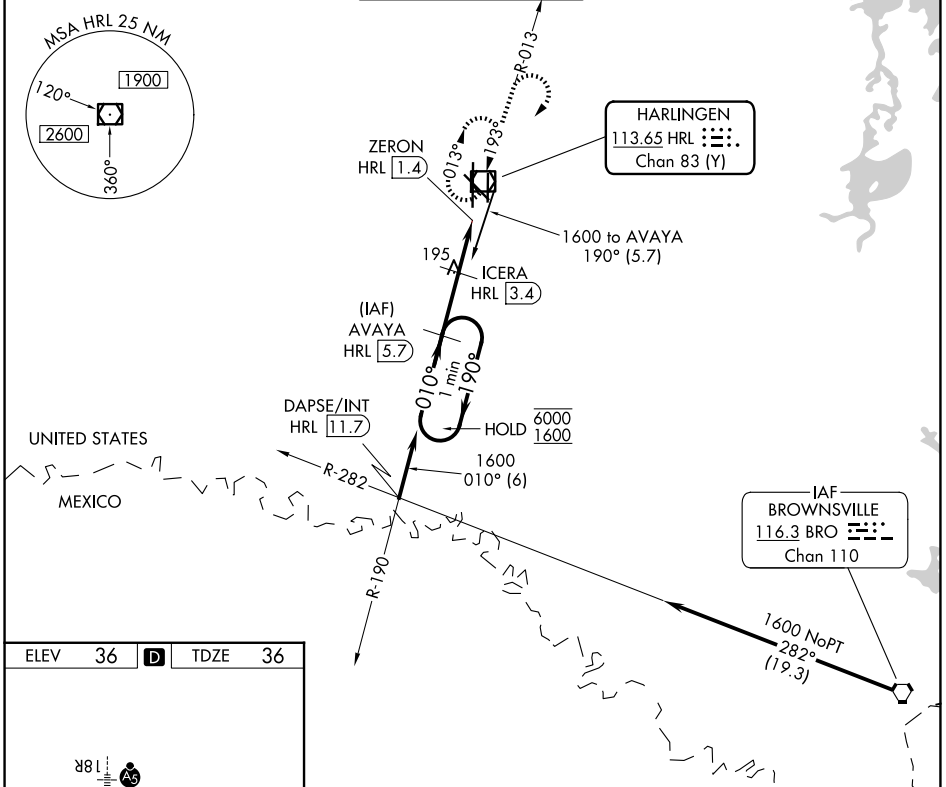
**⚠** When local altimeter setting not received, use Port Isabel altimeter setting and increase all MDAs 60 feet and S-36L visibility Cat C/D ¼ SM, and Circling visibility Cat C/D ½ SM. VDP NA when using PIL altimeter setting.

MALSR

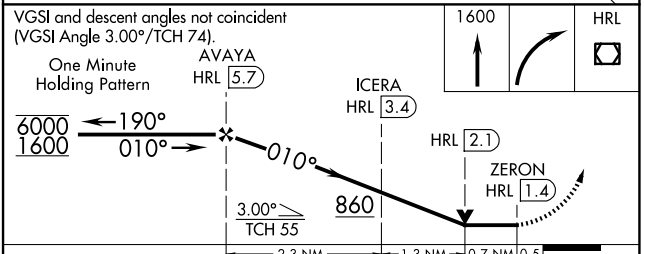
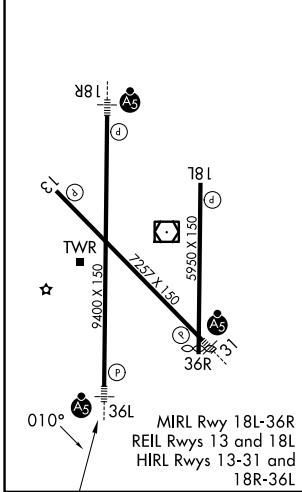


**MISSED APPROACH:** Climb to 1600 then right turn direct HRL VOR/DME and hold.

ATIS <b>124.85</b>	VALLEY APP CON <b>120.7 279.5</b>	HARLINGEN TOWER ★ <b>119.3(CTAF) 0 317.6</b>	GND CON <b>121.7</b>	UNICOM <b>122.95</b>
-----------------------	--------------------------------------	---	-------------------------	-------------------------



ELEV <b>36</b>	<b>D</b>	TDZE <b>36</b>
----------------	----------	----------------



CATEGORY	A	B	C	D
S-36L	460-1	424 (500-1)	460-1¼	424 (500-1¼)
CIRCLING	460-1 424 (500-1)	560-1 524 (600-1)	600-1½ 564 (600-1½)	680-2 644 (700-2)

SC-3, 14 MAY 2026 to 11 JUN 2026

SC-3, 14 MAY 2026 to 11 JUN 2026