

WAAS CH <b>42647</b> <b>W12A</b>	APP CRS <b>111°</b>	Rwy Ldg TDZE Apt Elev	<b>4001</b> <b>125</b> <b>127</b>
--	------------------------	-----------------------------	---

# RNAV (GPS) RWY 12

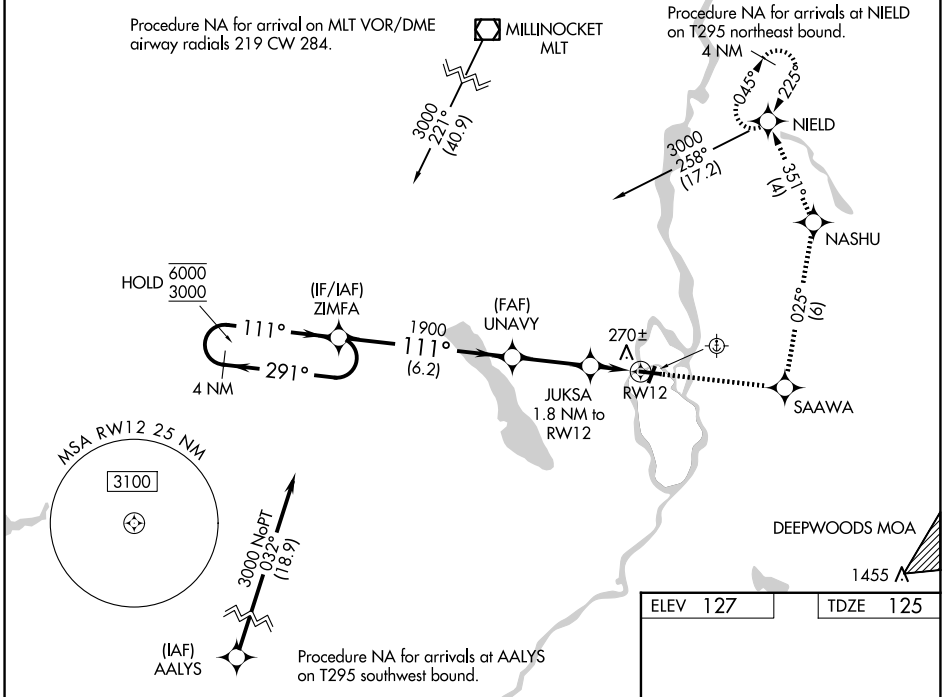
DEWITT FLD/OLD TOWN MUNI (OLD)

RNP APCH - GPS.

**▽** Rwy 12 helicopter visibility reduction below 3/4 SM NA. Circling NA to Rwy 17W and 35W. Circling Rwy 4 NA at night. Use BGR altimeter setting; when not received, use BHB altimeter setting and increase LPV DA to 497 feet; increase all MDAs 60 feet and LNAV visibility Cat C 1/2 SM, and Circling visibility Cat C 1/2 SM.

**△** MISSED APPROACH: Climb to 3100 direct SAAWA and on track 025° to NASHU and on track 351° to NIELD and hold, continue climb-in-hold to 3100.

BGR ASOS <b>127.75</b>	BANGOR APP CON <b>118.925 239.3</b>	UNICOM <b>122.8 (CTAF)</b>
---------------------------	--	-------------------------------



4 NM Holding Pattern	ZIMFA	3100	SAAWA	tr 025°	NASHU	tr 351°	NIELD
6000 ← 291°	← 111°	UNAVY 1900	JUKSA 1.8 NM to RW12	RW12	760		
GP 3.50°	TCH 60	6.2 NM	2.8 NM	1.8 NM			
CATEGORY	A	B	C	D			
LPV DA		449-1	324 (400-1)	NA			
LNAV MDA	560-1	435 (500-1)	560-1 1/4 435 (500-1 1/4)	NA			
CIRCLING	640-1 513 (600-1)	700-1 573 (600-1)	760-1 1/4 633 (700-1 1/4)	NA			

ELEV 127	TDZE 125
----------	----------

WATER RWY:  
17W-35W  
8400 X 100

REIL Rwy 4

MIRL Rwy 4-22 and 12-30

NE-1, 14 MAY 2026 to 11 JUN 2026

NE-1, 14 MAY 2026 to 11 JUN 2026