

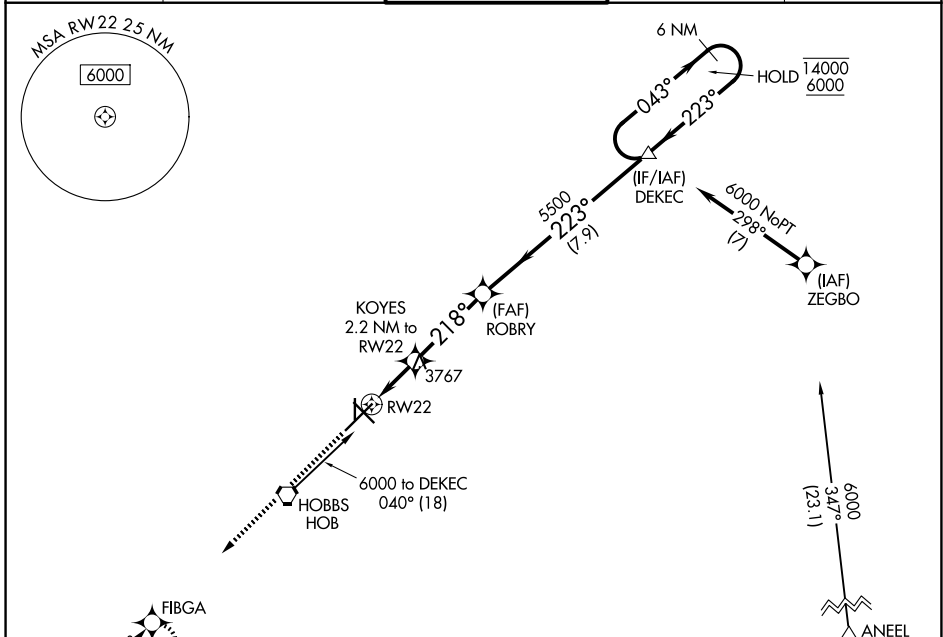
WAAS CH 82735 W22A	APP CRS 218°	Rwy Ldg TDZE Apt Elev	8000 3649 3661
--	------------------------	-----------------------------	---

RNAV (GPS) RWY 22

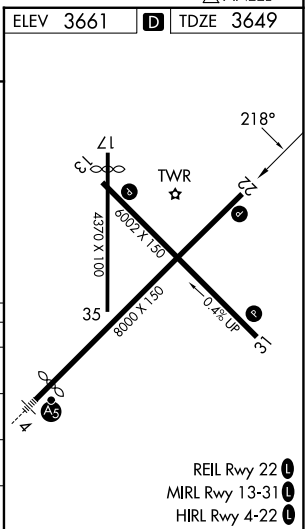
LEA COUNTY RGNL (HOB)

RNP APCH - GPS.	MISSED APPROACH: Climb to 5600 direct FIBGA and hold.
-----------------	---

ATIS 119.75	FORT WORTH CENTER 133.1 298.95	HOBBS TOWER ★ 120.65 (CTAF) 317.4	GND CON 121.9	UNICOM 122.95
-----------------------	--	---	-------------------------	-------------------------



ELEV 3661	TDZE 3649			
↑ FIBGA	6000			
KOYES 2.2 NM to RWY 22	ROBY 5500			
1 NM to RWY 22	DEKEC 6 NM Holding Pattern			
RWY 22	14000 / 6000			
GP 3.00°	TCH 44			
1 NM	1.2 NM	3.5 NM	7.9 NM	
CATEGORY	A	B	C	D
LPV DA	3899-3/4 250 (300-3/4)			
LNAV/VNAV DA	3899-3/4 250 (300-3/4)			
LNAV MDA	4020-1 371 (400-1)			
CIRCLING	4120-1 459 (500-1)	4160-1 499 (500-1)	4440-2 1/4 779 (800-2 1/4)	4440-2 1/2 779 (800-2 1/2)



- REIL Rwy 22
- MIRL Rwy 13-31
- HIRL Rwy 4-22

SW-1, 14 MAY 2026 to 11 JUN 2026

SW-1, 14 MAY 2026 to 11 JUN 2026