

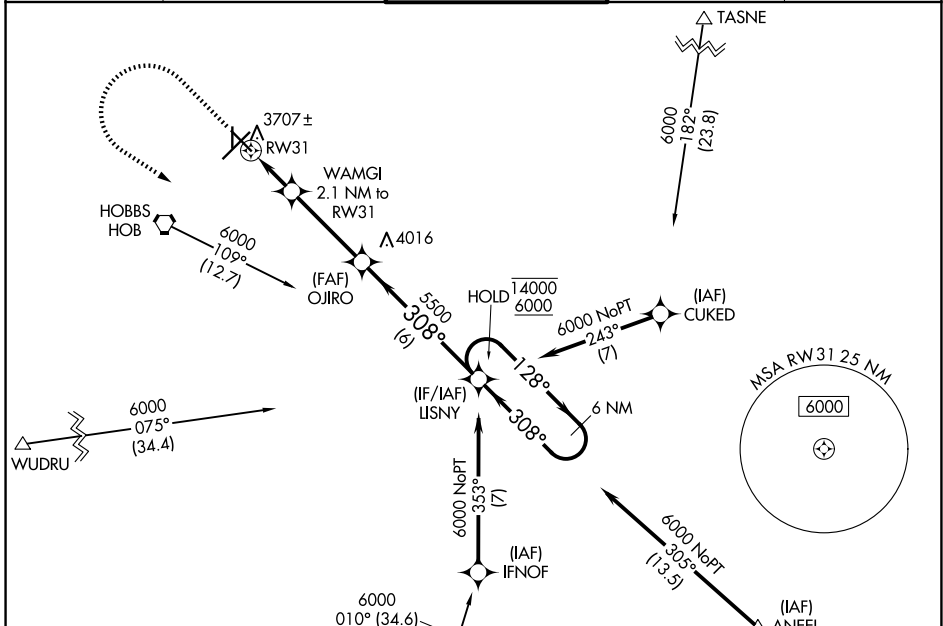
WAAS CH 69635 W31A	APP CRS 308°	Rwy Ldg TDZE Apt Elev	6002 3649 3661
--	------------------------	-----------------------------	---

RNAV (GPS) RWY 31

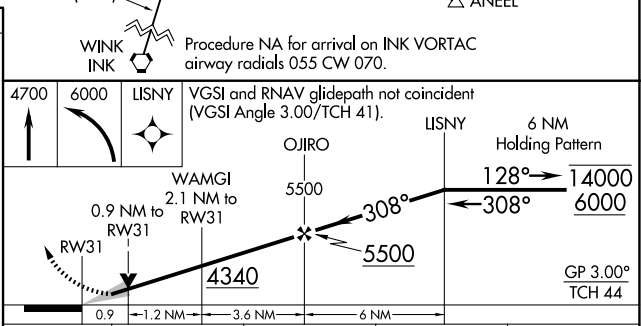
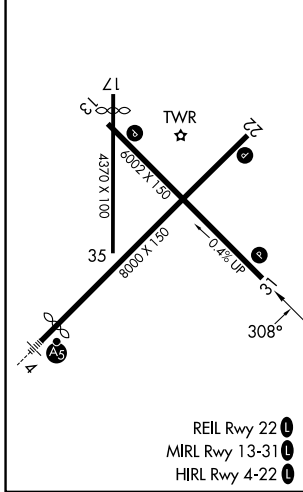
LEA COUNTY RGNL (HOB)

RNP APCH - GPS.		MISSED APPROACH: Climb to 4700 then climbing left turn to 6000 direct LISNY and hold.	
<p>⚠ Circling Rwy 17, 35 NA at night. For uncompensated Baro-VNAV systems, LNAV/VNAV NA below -1°C or above 54°C.</p>			

ATIS 119.75	FORT WORTH CENTER 133.1 298.95	HOBBS TOWER ★ 120.65 (CTAF) 317.4	GND CON 121.9	UNICOM 122.95
-----------------------	--	---	-------------------------	-------------------------



ELEV 3661	D	TDZE 3649
-----------	----------	-----------



CATEGORY	A	B	C	D
LPV DA		3899-3/4	250 (300-3/4)	
LNAV/VNAV DA		3899-3/4	250 (300-3/4)	
LNAV MDA		3960-1	311 (300-1)	
CIRCLING	4120-1	4160-1	4440-2 1/4	4440-2 1/2
	459 (500-1)	499 (500-1)	779 (800-2 1/4)	779 (800-2 1/2)

SW-1, 14 MAY 2026 to 11 JUN 2026

SW-1, 14 MAY 2026 to 11 JUN 2026