

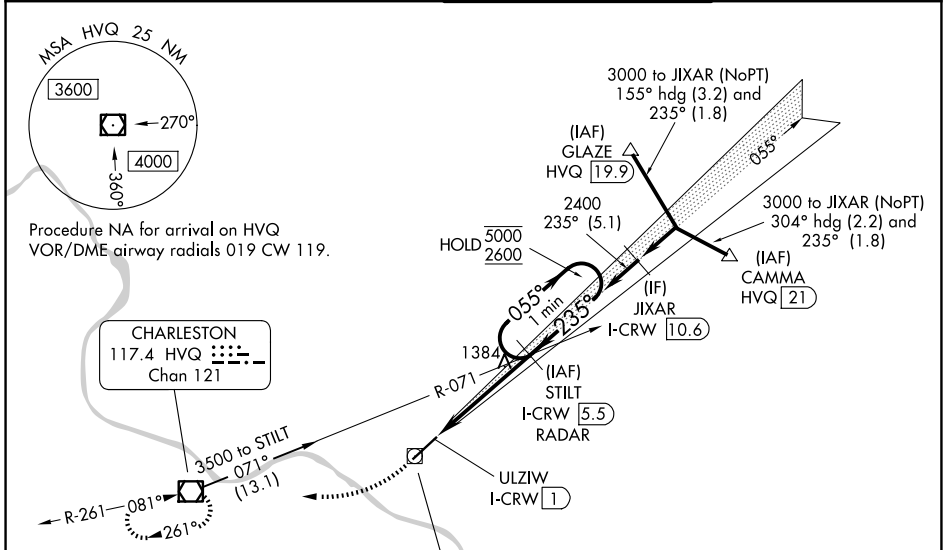
LOC/DME I-CRW 110.3 Chan 40	APP CRS 235°	Rwy Ldg TDZE 931 Apt Elev 947
---	------------------------	---

ILS or LOC RWY 23

WEST VIRGINIA INTL YEAGER (CRW)

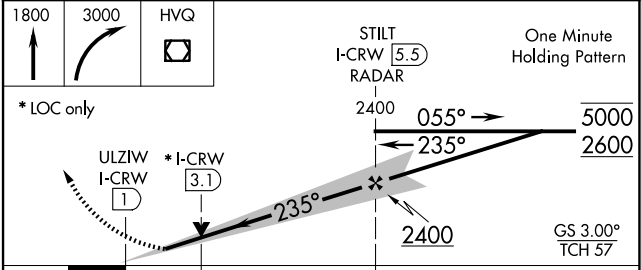
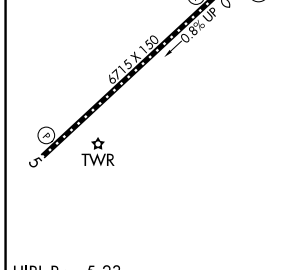
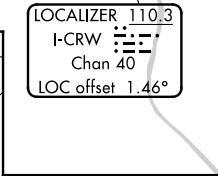
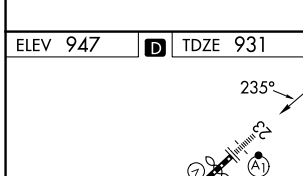
DME or RADAR required.		ALSF-1 	MISSED APPROACH: Climb to 1800 then climbing right turn to 3000 direct HVQ VOR/DME and hold.
Autopilot coupled approach NA below 1700. Rwy 23 helicopter visibility reduction below RVR 4000 NA. Inop table does not apply to S-ILS 23. For inop ALS, increase S-LOC 23 Cat A/B visibility to RVR 5500, and Cat C/D to 2 SM.			

ATIS 127.6	CHARLESTON APP CON 124.1 269.125	CHARLESTON TOWER 125.7 257.8	GND CON 121.8 348.6
----------------------	--	--	-------------------------------



NE-4, 14 MAY 2026 to 11 JUN 2026

NE-4, 14 MAY 2026 to 11 JUN 2026



FAF to MAP 4.5 NM					
CATEGORY	A	B	C	D	
S-ILS 23	1181/40		250 (300-¾)		
S-LOC 23	1640/40	709 (700-¾)	1640-1½	709 (700-1½)	