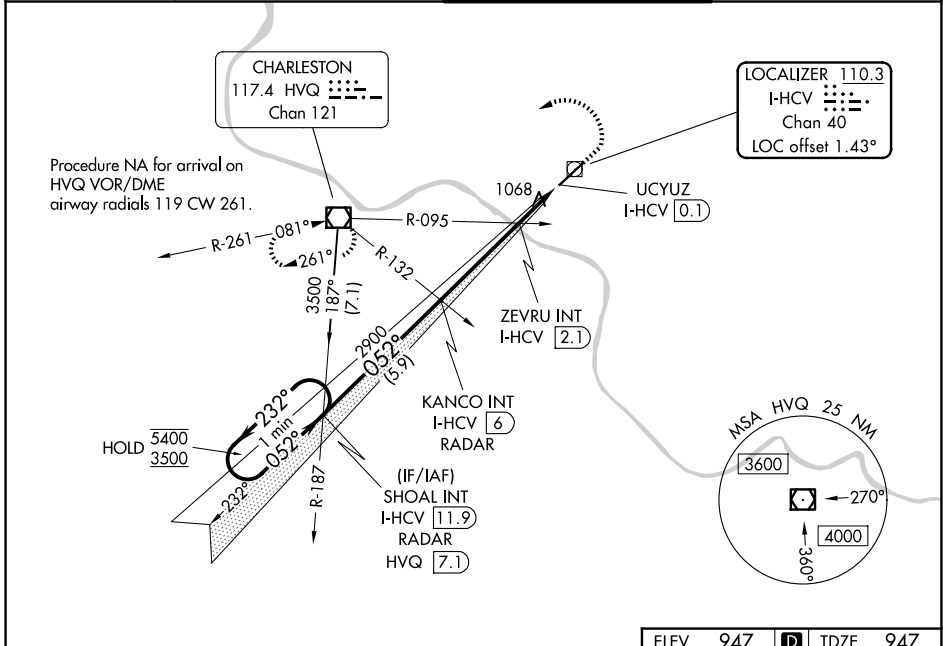


LOC/DME I-HCV 110.3 Chan 40	APP CRS 052°	Rwy Ldg 6215 TDZE 947 Apt Elev 947
---	------------------------	---

ILS or LOC RWY 5
WEST VIRGINIA INTL YEAGER (CRW)

<p>Autopilot coupled approach NA below 1300.</p>		<p>MISSED APPROACH: Climb to 1800 then climbing left turn to 3500 direct HVQ VOR/DME and hold.</p>	
<p>ATIS 127.6</p>	<p>CHARLESTON APP CON 124.1 269.125</p>	<p>CHARLESTON TOWER 125.7 257.8</p>	<p>GND CON 121.8 348.6</p>



NE-4, 14 MAY 2026 to 11 JUN 2026

NE-4, 14 MAY 2026 to 11 JUN 2026

<p>One Minute Holding Pattern</p>		<p>SHOAL INT I-HCV 11.9 RADAR</p>	<p>KANCO INT I-HCV 6 RADAR</p>	<p>ZEVRU INT I-HCV 2.1</p>	<p>I-HCV DME ANTENNA</p>	<p>UCUYZ I-HCV 0.1</p>
<p>5400 ← 232°</p> <p>3500 → 052°</p> <p>GS 3.00° TCH 56</p>	<p>2900</p> <p>1640</p>	<p>1800</p> <p>3500</p> <p>HVQ</p>	<p>ELEV 947 D TDZE 947</p>			
<p>5.9 NM</p>		<p>3.9 NM</p>		<p>1 NM</p>		<p>0.1 NM</p>
CATEGORY	A	B	C	D		
S-ILS 5	1197/40		250 (300-¾)			
S-LOC 5	1640/55	693 (700-1)		1640-2 693 (700-2)		
CIRCLING	1640-1	693 (700-1)		1760-2½ 813 (900-2½)		1880-3 933 (1000-3)
<p>ZEVURU FIX MINIMUMS (DUAL VOR RECEIVERS OR DME REQUIRED)</p>						
S-LOC 5	1320/55		373 (400-1)			
CIRCLING	1600-1	653 (700-1)		1760-2½ 813 (900-2½)		1880-3 933 (1000-3)
<p>HIRL Rwy 5-23 REIL Rwys 5</p>				<p>FAF to MAP 5.9 NM</p>		
<p>Knots</p>		60	90	120	150	180
<p>Min:Sec</p>		5:54	3:56	2:57	2:22	1:58