

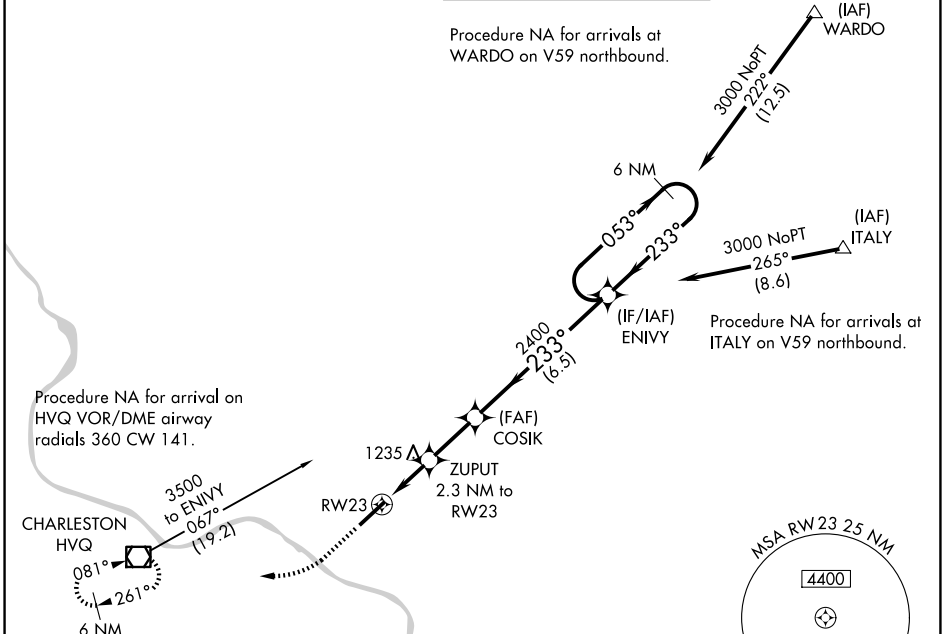
WAAS CH 45616 W23A	APP CRS 233°	Rwy Ldg TDZE Apt Elev	6215 931 947
--	------------------------	-----------------------------	---

RNAV (GPS) Y RWY 23

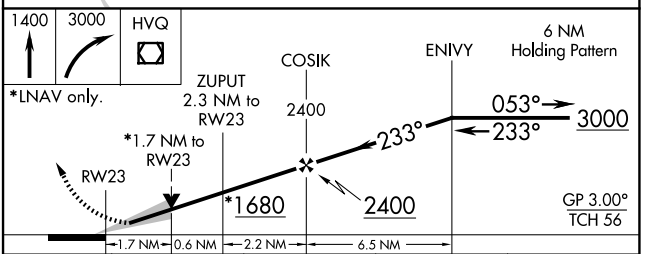
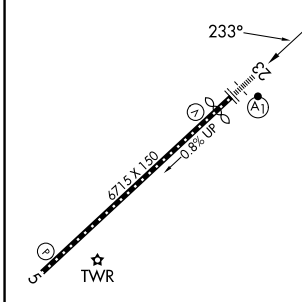
WEST VIRGINIA INTL YEAGER (CRW)

<p>▼ For uncompensated Baro-VNAV systems, LNAV/VNAV NA below -15°C (4°F) or above 54°C (130°F). DME/DME RNP-0.3 NA. ▲ For inoperative ALSF, increase LNAV/VNAV all Cats visibility to 2 1/4. **RVR 1800 authorized with use of FD or AP or HUD to DA.</p>	<p>ALSF-1</p>	<p>MISSED APPROACH: Climb to 1400 then dimbing right turn to 3000 direct HVQ VOR/DME and hold.</p>
---	---------------	--

<p>ATIS 127.6</p>	<p>CHARLESTON APP CON 124.1 269.125</p>	<p>CHARLESTON TOWER 125.7 257.8</p>	<p>GND CON 121.8 348.6</p>
------------------------------	--	--	---------------------------------------



ELEV 947	D	TDZE 931
----------	----------	----------



CATEGORY	A	B	C	D
LPV DA**		1131/24	200 (200-1/2)	
LNAV/VNAV DA		1601-1 7/8	670 (700-1 7/8)	
LNAV MDA	1500/24	569 (600-1/2)	1500-1 3/8	569 (600-1 3/8)
CIRCLING	1600-1	653 (700-1)	1760-2 1/2 813 (900-2 1/2)	1760-2 3/4 813 (900-2 3/4)

NE-4, 14 MAY 2026 to 11 JUN 2026

NE-4, 14 MAY 2026 to 11 JUN 2026