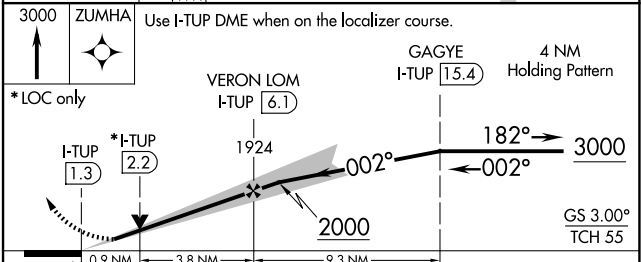
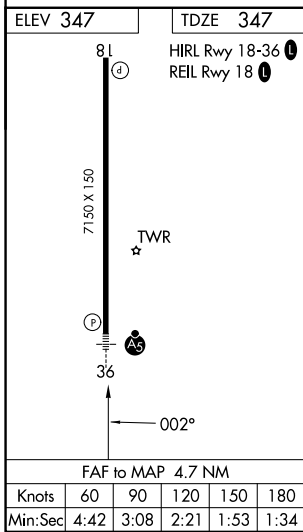
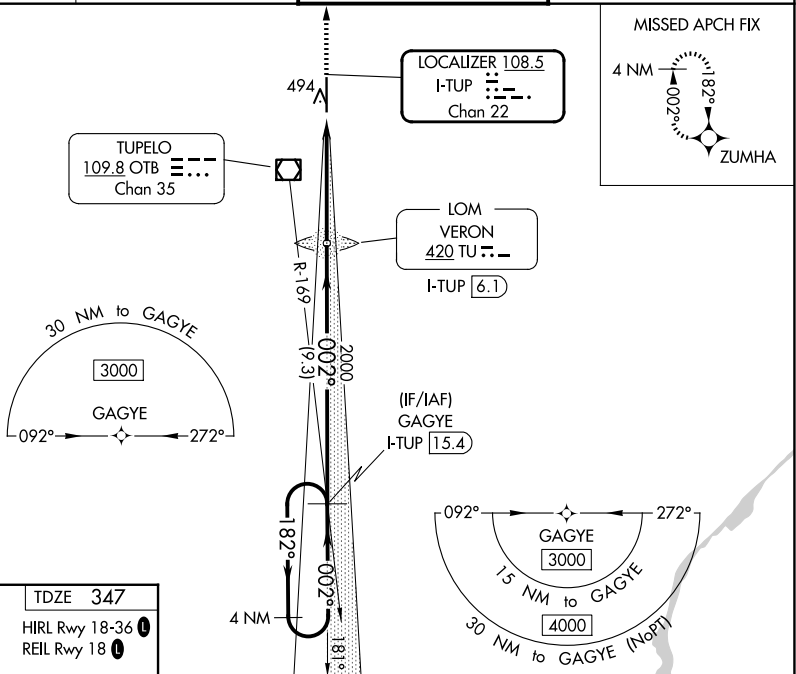


LOC/DME I-TUP <b>108.5</b> Chan <b>22</b>	APP CRS <b>002°</b>	Rwy Ldg TDZE Apt Elev	<b>7150</b> <b>347</b> <b>347</b>
---	------------------------	-----------------------------	---

# ILS Y or LOC Y RWY 36

TUPELO RGNL (TUP)

RNAV 1-GPS required. DME or ADF required for LOC only.		MALSR 	MISSED APPROACH: Climb to 3000 direct ZUMHA and hold.
▼ When local altimeter setting not received, use Columbus AFB altimeter setting and increase all DA 112 feet and all MDA 120 feet; increase S-LOC 36 Cat C and D visibility 3/8 SM and Circling Cat C and D visibility 1/2 SM. For inop ALS when using Columbus AFB altimeter setting, increase S-ILS 36 all Cats visibility 1/2 SM. VDP NA when using Columbus AFB altimeter setting. Autopilot coupled approach NA below 650 feet.			
ASOS <b>133.525</b>	MEMPHIS CENTER <b>128.5 279.55</b>	TUPELO TOWER ★ <b>118.775 (CTAF) 0 254.275</b>	GND CON <b>121.825 254.275</b>



CATEGORY	A	B	C	D
S-ILS 36	547-1/2		200 (200-1/2)	
S-LOC 36	700-1/2	353 (400-1/2)	700-5/8	353 (400-5/8)
CIRCLING	820-1	473 (500-1)	900-1 1/2	1140-2 1/2
			553 (600-1 1/2)	793 (800-2 1/2)

SC-4, 14 MAY 2026 to 11 JUN 2026

SC-4, 14 MAY 2026 to 11 JUN 2026