

WAAS CH <b>77712</b> W18A	APP CRS <b>182°</b>	Rwy Ldg <b>7150</b> TDZE <b>344</b> Apt Elev <b>346</b>
---------------------------------	------------------------	---

# RNAV (GPS) RWY 18

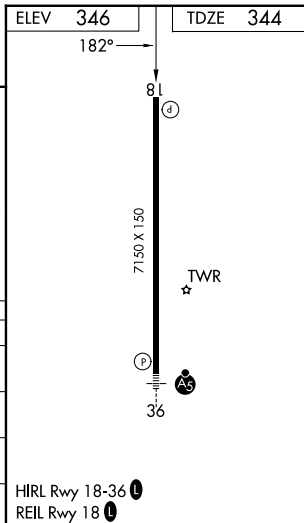
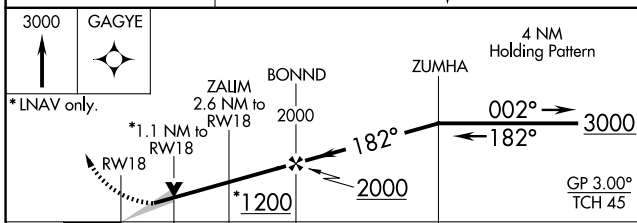
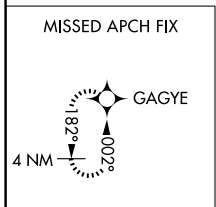
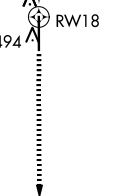
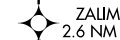
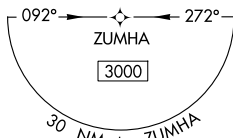
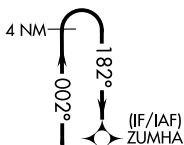
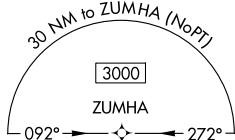
TUPELO RGNL (TUP)

RNP APCH.

**⚠** For uncompensated Baro-VNAV systems, LNAV/VNAV NA below -9°C (16°F) or above 54°C (130°F). When local altimeter not received, use Columbus AFB altimeter setting and increase all DA 112 feet and all MDA 120 feet; increase LPV all Cats visibility ½ mile, LNAV/VNAV all Cats visibility ½ mile and LNAV Cats C and D ½ mile and Circling Cats C and D ½ mile. Baro-VNAV and VDP NA when using Columbus AFB altimeter setting.

MISSED APPROACH:  
Climb to 3000 direct  
GAGYE and hold.

ASOS <b>133.525</b>	MEMPHIS CENTER <b>128.5 279.55</b>	TUPELO TOWER ★ <b>118.775 (CTAF) 0 254.275</b>	GND CON <b>121.825 254.275</b>
------------------------	---------------------------------------	---	-----------------------------------



CATEGORY	A	B	C	D
LPV DA	544-3/4		200 (200-3/4)	
LNAV/VNAV DA	659-1		315 (400-1)	
LNAV MDA	740-1 396 (400-1)		740-1 396 (400-1 1/8)	
CIRCLING	820-1 474 (500-1)		900-1 1/2 1140-2 1/2 554 (600-1 1/2) 794 (800-2 1/2)	

SC-4, 14 MAY 2026 to 11 JUN 2026

SC-4, 14 MAY 2026 to 11 JUN 2026