

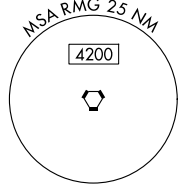
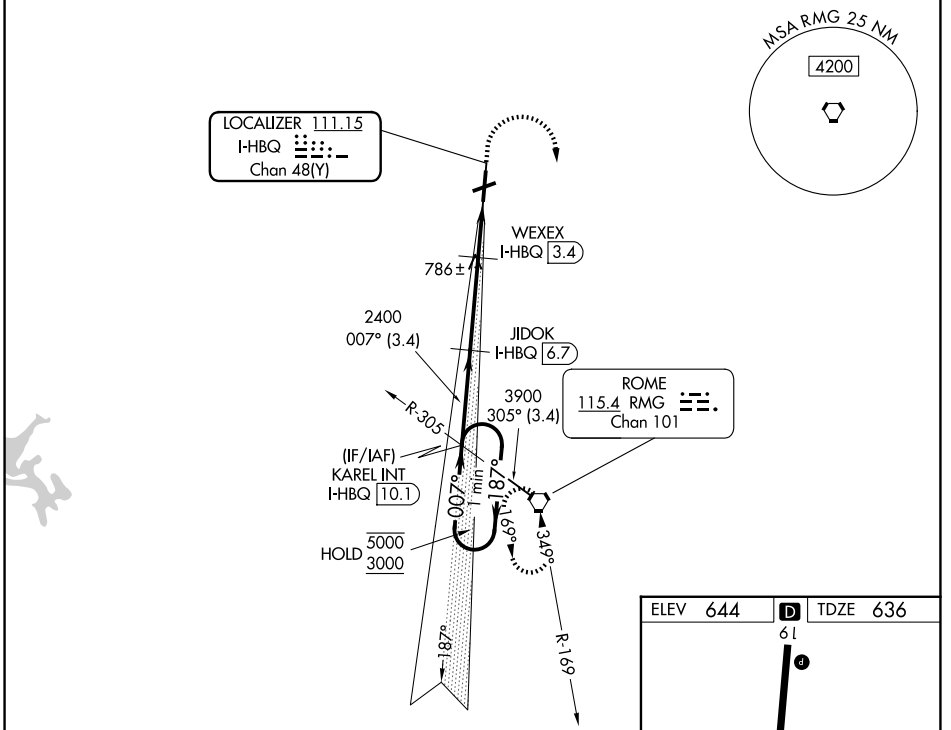
LOC/DME I-HBQ 111.15 Chan 48(Y)	APP CRS 007°	Rwy Ldg TDZE 636 Apt Elev 644
---	------------------------	---

ILS or LOC RWY 1

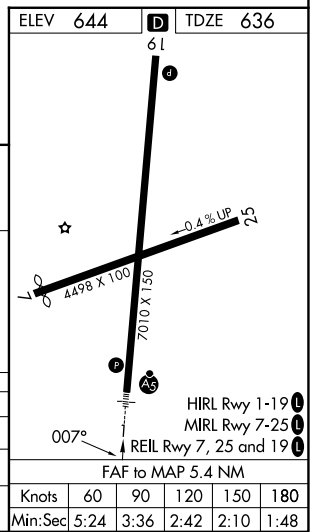
RICHARD B RUSSELL RGNL - J H TOWERS FLD (RMG)

DME required for LOC only.	MALSR 	MISSED APPROACH: Climb to 1200 then climbing right turn to 4000 direct RMG VORTAC and hold, continue climb-in-hold to 4000.
⚠ Rwy 1 helicopter visibility reduction below 3/4 SM NA. Circling NA west of Rwy 1-19 at night. Circling NA northwest of Rwy 7 and 19. For inop ALS, increase S-ILS 1 all Cats visibility to 7/8 SM and increase S-LOC 1 Cats A/B visibility to 1 SM and increase Cats C/D visibility to 1 1/8 SM.		

ASOS 119.925	ATLANTA CENTER 124.5 270.325	GCO 121.725	UNICOM 122.725 (CTAF) 0
------------------------	--	-----------------------	-----------------------------------



One Minute Holding Pattern	KAREL INT I-HBQ 10.1	JIDOK I-HBQ 6.7	WEXEX I-HBQ 3.4	1200	4000	RMG
5000 ← 187°	3000 → 007°	2400	1340			
GS 3.00°	TCH 49	2400	1340			
	3.4 NM	3.3 NM	1 NM	1.1 NM		
CATEGORY	A	B	C	D		
S-ILS 1		941-3/4	305 (300-3/4)			
S-LOC 1		1040-3/4	404 (400-3/4)			
CIRCLING	1140-1 496 (500-1)	1200-1 556 (600-1)	1480-2 1/2 836 (900-2 1/2)	1840-3 1196 (1200-3)		



ILS or LOC RWY 1

SE-4, 14 MAY 2026 to 11 JUN 2026

SE-4, 14 MAY 2026 to 11 JUN 2026

	Knots	60	90	120	150	180
	Min:Sec	5:24	3:36	2:42	2:10	1:48