

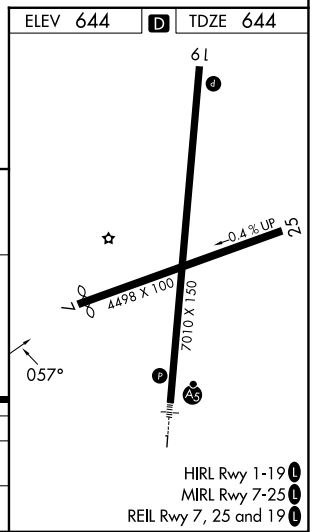
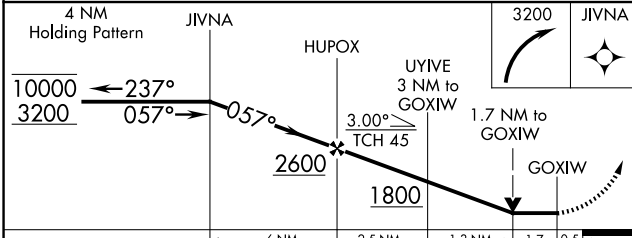
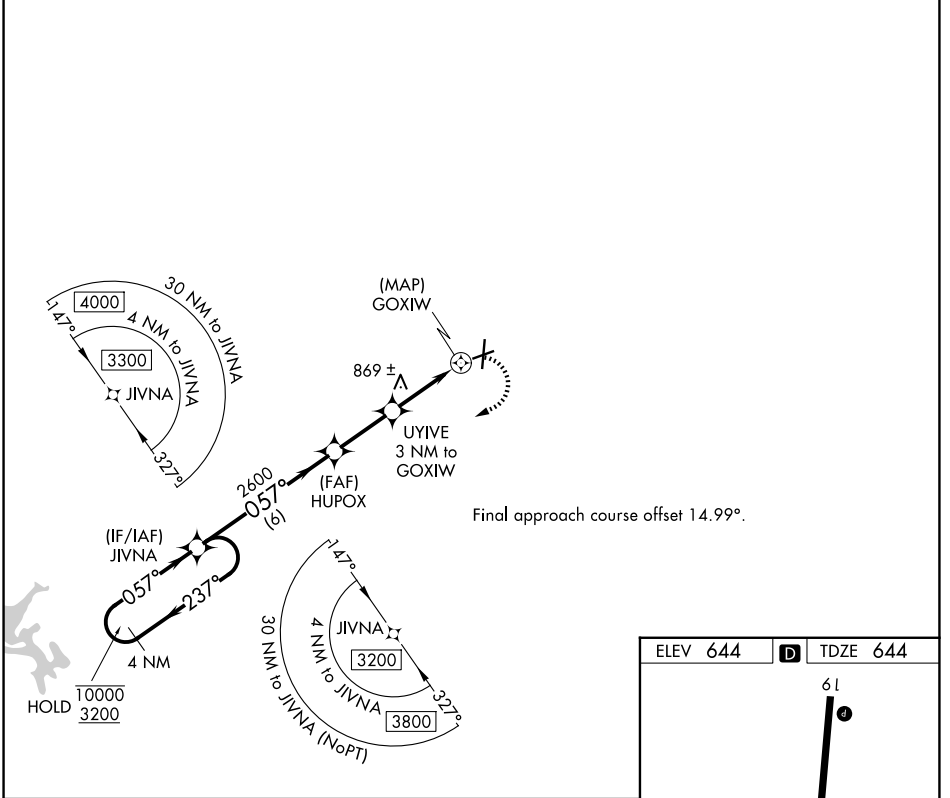
APP CRS	Rwy Ldg	4380
057°	TDZE	644
	Apt Elev	644

RNAV (GPS) RWY 7

RICHARD B RUSSELL RGNL - J H TOWERS FLD (RMG)

RNP APCH - GPS.	<p>▼ Rwy 7 helicopter visibility reduction below 3/4 SM NA. ▲ Straight-in minimums NA at night. Circling NA northwest of Rwy 7 and 19.</p>	MISSED APPROACH: Climbing right turn to 3200 direct JIVNA and hold.
-----------------	--	---

ASOS 119.925	ATLANTA CENTER 124.5 270.325	GCO 121.725	UNICOM 122.725 (CTAF) 0
------------------------	--	-----------------------	-----------------------------------



CATEGORY	A	B	C	D
LNVA MDA	1380-1 736 (800-1)		1380-2 736 (800-2)	
CIRCLING	1380-1 736 (800-1)		1480-2 1/2 836 (900-2 1/2)	1840-3 1196 (1200-3)

SE-4, 14 MAY 2026 to 11 JUN 2026

SE-4, 14 MAY 2026 to 11 JUN 2026