


WAAS CH <b>62901</b> <b>W05A</b>	APP CRS <b>051°</b>	Rwy Idg TDZE Apt Elev	<b>6002</b> <b>759</b> <b>782</b>
--	------------------------	-----------------------------	---

# RNAV (GPS) RWY 5

ANDERSON RGNL (A.ND)

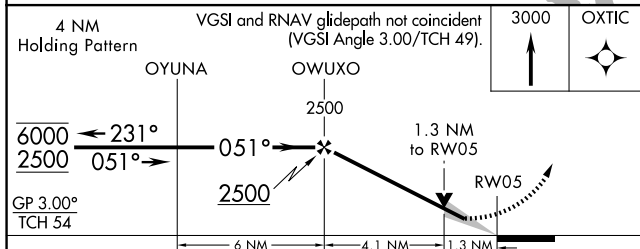
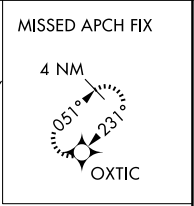
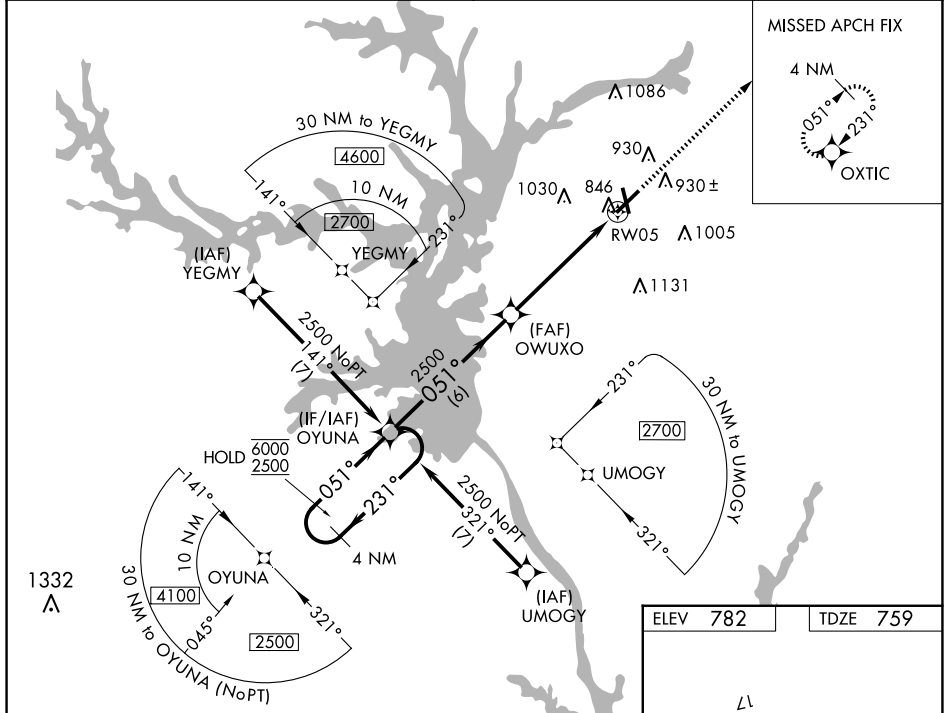
RNP APCH - GPS.

**⚠** VDP NA when using Clemson altimeter setting. When local altimeter setting not received, use Clemson altimeter setting and increase LPV DA to 1006 feet; increase all MDAs 60 feet and LNAV visibility Cats C/D ½ SM, Circling visibility Cats C/D ¼ SM. Circling Rwy 17, 35 NA at night. For Inop ALS when using Clemson altimeter setting, increase LNAV visibility Cats C/D to 1½ SM.

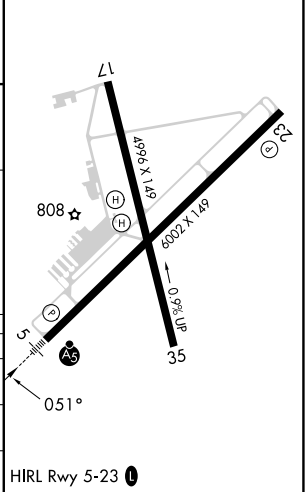
MALSR 

MISSED APPROACH: Climb to 3000 direct OXTIC and hold.

ASOS <b>120.675</b>	GREER APP CON★ <b>118.8 270.275</b>	CTAF <b>123.60</b>
------------------------	--	-----------------------



ELEV 782	TDZE 759
----------	----------



CATEGORY	A	B	C	D
LPV DA	959-½		200 (200-½)	
LNAV MDA	1260-½	441 (500-½)	1200-7/8	441 (500-7/8)
CIRCLING	1260-1 478 (500-1)	1320-1 538 (600-1)	1440-1¾ 658 (700-1¾)	1500-2¼ 718 (800-2¼)

SE-2, 14 MAY 2026 to 11 JUN 2026

SE-2, 14 MAY 2026 to 11 JUN 2026