

(BRALY1.BRALY) 23334

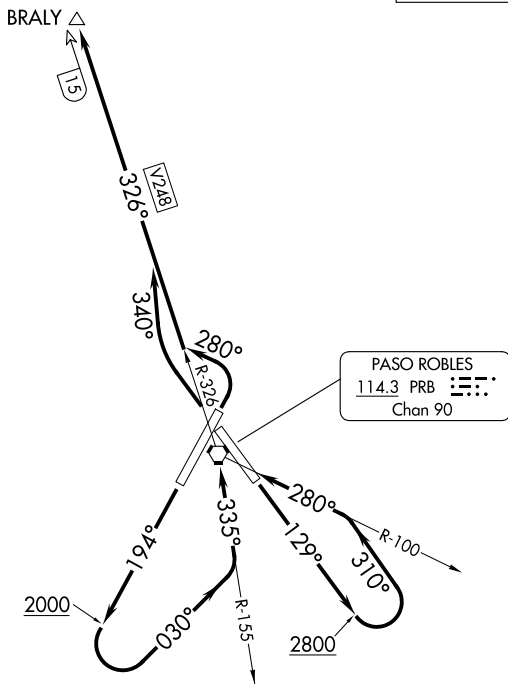
BRALY ONE DEPARTURE

AL-858 (FAA)

PASO ROBLES MUNI (P.R.B)
PASO ROBLES, CALIFORNIA

ASOS
120.125
OAKLAND CENTER
128.7 307.0
CTAF
123.0

**TOP ALTITUDE:
ASSIGNED BY ATC**



NOTE: DME required.

TAKEOFF MINIMUMS

- Rwy 1: Standard with minimum climb of 235' per NM to 2200.
- Rwy 13: Standard with minimum climb of 220' per NM to 1700.
- Rwy 19: Standard.
- Rwy 31: Standard with minimum climb of 235' per NM to 2200.

NOTE: Chart not to scale.

DEPARTURE ROUTE DESCRIPTION

TAKEOFF RUNWAY 1: Climbing left turn on heading 280° to intercept PRB VORTAC R-326 to BRALY/PRB 15 DME, thence . . .

TAKEOFF RUNWAY 13: Climb on heading 129° to 2800 then climbing left turn heading 310° to intercept PRB VORTAC R-100 to PRB VORTAC, then on R-326 to BRALY/PRB 15 DME, thence . . .

TAKEOFF RUNWAY 19: Climb on heading 194° to 2000 then climbing left turn heading 030° to intercept PRB VORTAC R-155 to PRB VORTAC, then on R-326 to BRALY/PRB 15 DME, thence . . .

TAKEOFF RUNWAY 31: Climbing right turn heading 340° and PRB VORTAC R-326 to BRALY/PRB 15 DME, thence . . .

. . . maintain ATC assigned altitude; expect clearance to filed altitude 10 minutes after departure.

BRALY ONE DEPARTURE
(BRALY1.BRALY) 21MAY20

PASO ROBLES, CALIFORNIA
PASO ROBLES MUNI (P.R.B)

SW-3, 14 MAY 2026 to 11 JUN 2026

SW-3, 14 MAY 2026 to 11 JUN 2026