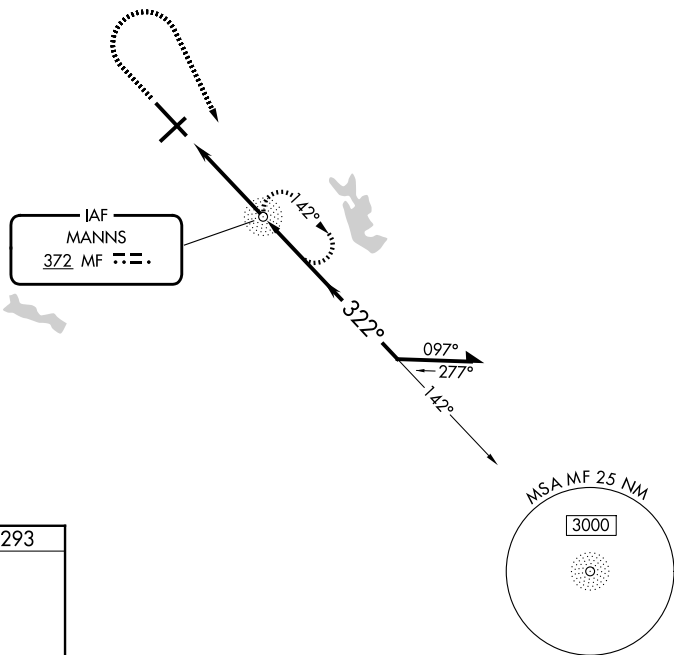


NDB MF <b>372</b>	APP CRS <b>322°</b>	Rwy Ldg TDZE Apt Elev	<b>9001</b> <b>1293</b> <b>1297</b>
----------------------	------------------------	-----------------------------	---

**NDB RWY 32**  
MANSFIELD LAHM RGNL (MF'D)

RADAR required for procedure entry.		MALSR AS	MISSED APPROACH: Climb to 2300 then climbing right turn to 3000 direct MF NDB and hold.
For inop ALS increase Cats A and B visibility to RVR 5500.			

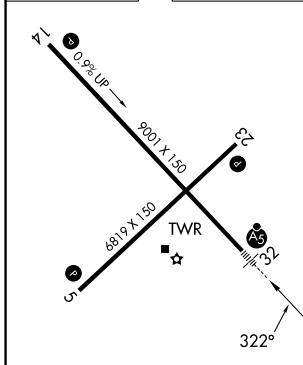
ATIS <b>125.3</b>	CLEVELAND APP CON ★ <b>128.35 360.65</b>	MANSFIELD TOWER ★ <b>119.8 (CTAF) 291.775</b>	GND CON <b>121.8 291.775</b>	UNICOM <b>122.95</b>
----------------------	---	--	---------------------------------	-------------------------



EC-2, 14 MAY 2026 to 11 JUN 2026

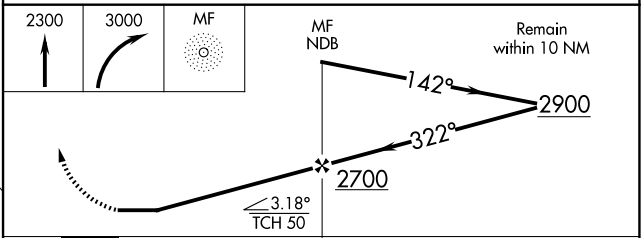
EC-2, 14 MAY 2026 to 11 JUN 2026

ELEV 1297	<b>D</b>	TDZE 1293
-----------	----------	-----------



HIRL Rws 5-23 and 14-32  
REIL Rws 5 and 23

FAF to MAP 4 NM					
Knots	60	90	120	150	180
Min:Sec	4:00	2:40	2:00	1:36	1:20



CATEGORY	A	B	C	D
S-32	1820/40	527 (600-¾)	1820/55	527 (600-1)
CIRCLING	1820-1	523 (600-1)	2000-2 703 (800-2)	2000-2¼ 703 (800-2¼)