

LOC I-UIIN 110.1	APP CRS 218°	Rwy Ldg TDZE Apt Elev	7098 753 768
----------------------------	------------------------	-----------------------------	-----------------------------------------

LOC BC RWY 22

QUINCY RGNL-BALDWIN FLD (UIIN)

RADAR required for procedure entry at MALGA. RNP APCH - GPS.

▽ VDP NA when using Pittsfield altimeter setting. When local altimeter setting not received, use Pittsfield altimeter setting and increase all MDAs 80 feet and S-22 visibility Cat C/D 1/8 SM. DME from UIIN TACAN. DME use requires simultaneous reception of I-UIIN and UIIN DME.

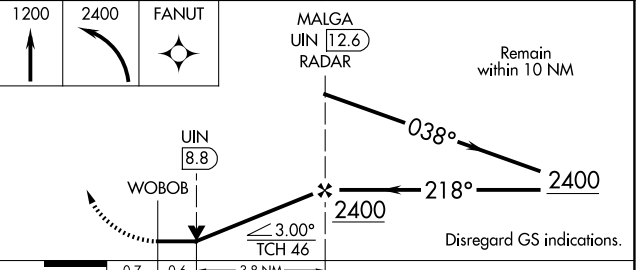
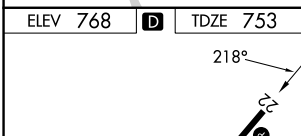
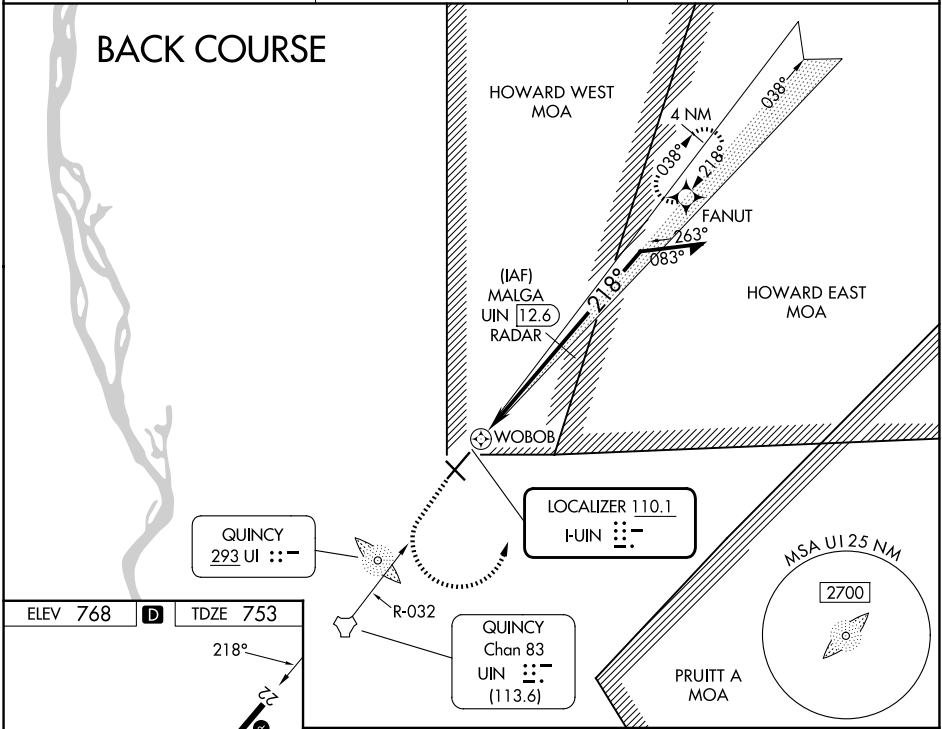
MISSED APPROACH: Climb to 1200 then climbing left turn to 2400 direct FANUT and hold.

ASOS
121.425

KANSAS CITY CENTER
126.225 317.775

UNICOM
123.0 (CTAF)

BACK COURSE



HIRL Rwy 4-22 **Ⓛ**
MIRL Rwy 13-31 **Ⓛ**
REIL Rwy 22 **Ⓛ**

FAF to MAP 4.4 NM

Knots	60	90	120	150	180
Min:Sec	4:24	2:56	2:12	1:46	1:28

CATEGORY	A	B	C	D
S-22	1180-1	427 (500-1)	1180-1¼	427 (500-1¼)
CIRCLING	1180-1 412 (500-1)	1220-1 452 (500-1)	1240-1½ 472 (500-1½)	1320-2 552 (600-2)

EC-3, 14 MAY 2026 to 11 JUN 2026

EC-3, 14 MAY 2026 to 11 JUN 2026